

PROJECT: 0021 New Port of Veracruz: Specialized Bulk Agricultural Products Terminal

SECTOR:
Transport

SUBSECTOR:
Ports

STAGE ANALYZED:
Operation

YEAR OF UPDATE:
2025

[Guide to read this datasheet](#)



Project's sustainability summary: The Project is part of the response to the limitations that the Port of Veracruz faces and prevent the efficient handling of new vessels and of agricultural bulk, which incur extra costs for anchoring.



ECONOMIC AND FINANCIAL SUSTAINABILITY

EXAMPLE OF GOOD PRACTICES

A detailed annual plan for the preventive and corrective maintenance of the equipment is mentioned, as well as a maintenance plan for the infrastructure.

Sustainability criteria

	NA	T1	T2	T3
Economic and social returns				
Creation of employment opportunities and boost local productivity				
Financial sustainability of assets				
Detailed risk analysis				
Cash flow transparency and creditworthiness				
Infrastructure asset maintenance and optimal use				
Sustainability incentives				



ENVIRONMENTAL SUSTAINABILITY AND CLIMATE RESILIENCE

EXAMPLE OF GOOD PRACTICES

The design and implementation of an Emission Control Program is mentioned and the use of low-pollution spectrum lamps with high energy efficiency.

Sustainability criteria

	NA	T1	T2	T3
Greenhouse gas emissions				
Climate risks, resilience and disaster risk management				
Impacts on biodiversity and native flora and fauna in the region				
Environmental impact of the Project				
Control and monitoring of pollutants				
Efficient use of resources and recycling strategies				
Efficient use of energy and renewable sources				
Preservation or enhancement of public spaces				



SOCIAL SUSTAINABILITY

EXAMPLE OF GOOD PRACTICES

The NMX-R-025-SCFI-2015 Official Norm for Labour Equality and Non-Discrimination is met.

Sustainability criteria

	NA	T1	T2	T3
Reduction of poverty and access to basic services				
Integration of communities and other interested parties				
Integration of people with disabilities or special needs				
Effects of the project in the security of the region and in the health of workers and nearby communities				
Compliance with human and labor rights				
Gender inclusion and women's economic empowerment through the project				
Equal distribution of benefits and compensations to communities				



INSTITUTIONAL SUSTAINABILITY

EXAMPLE OF GOOD PRACTICES

A data collection and monitoring system is included with which the operations of the port will be organized and communicated to the Integral Port Administration of Veracruz.

Sustainability criteria

	NA	T1	T2	T3
Alignment with national and international strategies				
Sectoral and institutional integration				
Corporate sustainability, management and governance				
Transparency and anti-corruption protocols				
Legal requirements and compliance with social and environmental policies				
Development of more sustainable technologies and capacities				
Knowledge transfer in matters related to sustainability				
Pre-existing conditions and their monitoring				

Source of this project: Partial Assignment of Rights Agreement / Cost-Benefit Analysis of the Natural Expansion of the Port of Veracruz in the North Zone / Environmental Impact Statement for the Construction and Operation of the Agricultural Bulk Terminal of the New Port of Veracruz - 30VE2017ID155 / Assignee's Website - PETRA

SECTOR:
Transport

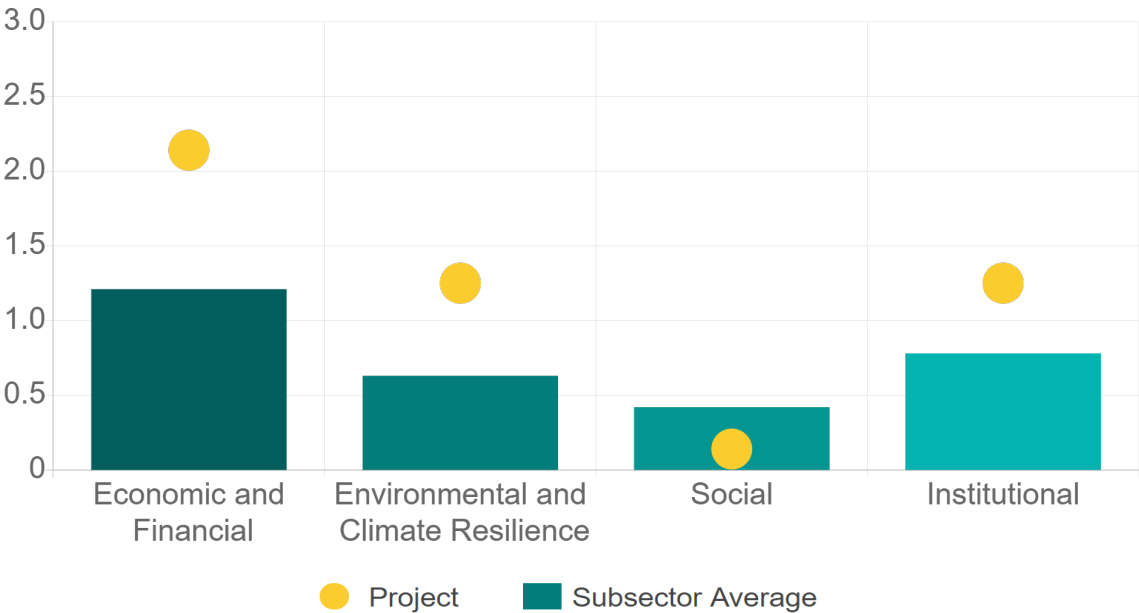
SUBSECTOR:
Ports

STAGE ANALYZED:
Operation

YEAR OF UPDATE:
2025

Comparison of this project vs other projects of the same subsector

(Number of projects included: 4)



Methodological framework
defined by the Inter-
American Development
Bank (IDB)

View



HACIENDA
SECRETARÍA DE HACIENDA Y CRÉDITO PÚBLICO

BANBRAS
BANCO NACIONAL DE OBRAS Y SERVICIOS PÚBLICOS S.N.C.

IDB
Inter-American
Development Bank

**cooperación
alemana**
DEUTSCHE ZUSAMMENARBEIT

giz Deutsche Gesellschaft
für Internationale
Zusammenarbeit (GIZ) GmbH

PROJECT: 0021 New Port of Veracruz: Specialized Bulk Agricultural Products Terminal

SECTOR:
Transport

SUBSECTOR:
Ports

STAGE ANALYZED:
Operation

YEAR OF UPDATE:
2025

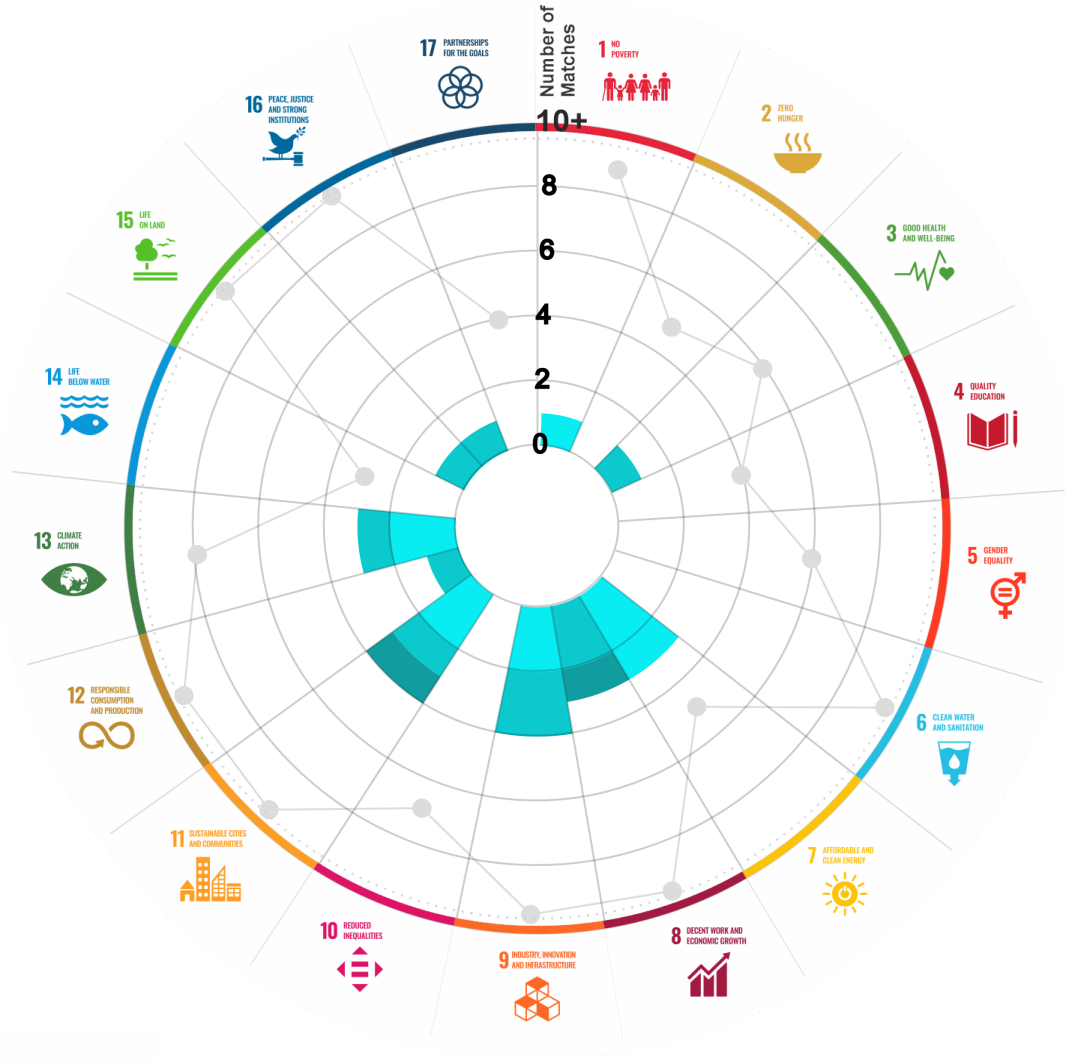
This section aims to present the potential alignment of the infrastructure project with the 17 Sustainable Development Goals (SDGs) of the 2030 Agenda. The relevance of this exercise resides in that it provides information to the actors of the infrastructure ecosystem for decision-making in investment that considers and promotes sustainable development.

Reading guide [View](#)

1. ALIGNMENT BY SUBSECTOR



2. ALIGNMENT BY SDG



3. ALIGNMENT BY CRITERIA AND TARGETS

[View](#)



Explanation of the alignment of the sustainability criteria and the SDGs.

[View](#)



The tonality of the bars represents the level of detail of the information available from the IDB criteria and its potential alignment for each SDG, based on the scale: N.A., TIER 1, TIER 2 or TIER 3.



Number of times the project information coincides with the alignment of the IDB criteria and the SDGs.



Approximate reference to the number of maximum alignments a project can have between the IDB criteria and the targets of the SDGs.

PROJECT

DESIGN, CONSTRUCTION, INSTALLATION, OPERATION, MAINTENANCE AND EXPLOITATION OF A SPECIALIZED PUBLIC TERMINAL FOR BULK AGRICULTURAL PRODUCTS HANDLING IN THE NEW PORT OF VERACRUZ.

SECTOR: TRANSPORT
SUBSECTOR: PORTS

Type of Investment: Brownfield

Macroproject: New Port of Veracruz

Short Name of the Project: 0021 New Port of Veracruz: Specialized Bulk Agricultural Products Terminal

Contract Currency:

Mexican Pesos MXN

Estimated Investment MXN

\$ 849,000,000

Estimated Investment USD

\$ 49,649,122

Exchange rate (USD/MXN) used by the Ministry of Finance for the economic plan 2024 \$ 17.1

DESCRIPTION

The project consists of the construction and exploitation of a public port terminal in an area of approximately 100,002 m2 and a waterfront of 300 m for specialized maneuvers and handling of agricultural bulks, as well as liquid or semi-liquid products derived from agricultural bulk.

Also, is considered along the water front of the aforementioned area, in the manner and terms established in the bases, a dock for public use to handle the cargo of the terminal, which will operate in specialized maneuvering.

The terminal has a warehouse with a capacity of 15,000 tons, 5 grain silos with a capacity of 10,500 tons each, 6 tanks with a capacity of 2,460 tons each, 2 tanks with a capacity of 1,640 tons each, 3 tanks with a capacity of 820 tons each and 6 tanks of 492 tons each.

Contract Scope: Design, Construction, Installation, Operation, Maintenance, Exploitation

Type of Project: Public / Private

Selection Process: International Open Tender

Term: 20 years

Type of Contract: Partial Assignment of Rights

Payment Source: Project revenues / Rate

Asset (s): Port Terminal 100,002 m2

GEOLOCATION



SPONSOR



Entity

Secretaría de Marina

Department

Coordinación General de Puertos y Marina Mercante
Administración del Sistema Portuario Nacional
Veracruz, S.A. de C.V.

Contact

Almirante (Retirado) Romel Eduardo Ledezma Abaroa

E-mail

dirgral@puertodeveracruz.com.mx

TIMELINE



Email: proyectosmexico@banobras.gob.mx



SHCP

SECRETARÍA DE HACIENDA
Y CRÉDITO PÚBLICO

BANOBRAS

BANCO NACIONAL DE OBRAS
Y SERVICIOS PÚBLICOS S.N.C.