

**PROJECT:** 0010 Desalinization Plant of Guaymas and Empalme, Sonora

**SECTOR:**  
Water and Environment

**SUBSECTOR:**  
Water Supply

**STAGE ANALYZED:**  
Operation

**YEAR OF UPDATE:**  
2025

[Guide to read this datasheet](#)



**Project's sustainability summary:** The project has a sensitivity analysis that demonstrates its profitability in the presence of changes in its main variables. The implementation of the project will generate social benefits by increasing the supply of drinking water while generating social awareness of the importance of caring for biodiversity, flora and fauna through the training courses carried out.



## ECONOMIC AND FINANCIAL SUSTAINABILITY

### EXAMPLE OF GOOD PRACTICES

The project has a detailed analysis of the risks to which it could be exposed and potential response alternatives to unexpected changes.

### Sustainability criteria

	NA	T1	T2	T3
Economic and social returns				
Creation of employment opportunities and boost local productivity				
Financial sustainability of assets				
Detailed risk analysis				
Cash flow transparency and creditworthiness				
Infrastructure asset maintenance and optimal use				
Sustainability incentives				



## ENVIRONMENTAL SUSTAINABILITY AND CLIMATE RESILIENCE

### EXAMPLE OF GOOD PRACTICES

The project will consider training on the importance of caring for biodiversity, flora and fauna so that awareness of its importance can be generated.

### Sustainability criteria

	NA	T1	T2	T3
Greenhouse gas emissions				
Climate risks, resilience and disaster risk management				
Impacts on biodiversity and native flora and fauna in the region				
Environmental impact of the Project				
Control and monitoring of pollutants				
Efficient use of resources and recycling strategies				
Efficient use of energy and renewable sources				
Preservation or enhancement of public spaces				



## SOCIAL SUSTAINABILITY

### EXAMPLE OF GOOD PRACTICES

The project will facilitate access to basic services in its area of influence, through the improvement of water supply for domestic, commercial and industrial uses.

### Sustainability criteria

	NA	T1	T2	T3
Reduction of poverty and access to basic services				
Integration of communities and other interested parties				
Integration of people with disabilities or special needs				
Effects of the project in the security of the region and in the health of workers and nearby communities				
Compliance with human and labor rights				
Gender inclusion and women's economic empowerment through the project				
Equal distribution of benefits and compensations to communities				



## INSTITUTIONAL SUSTAINABILITY

### EXAMPLE OF GOOD PRACTICES

The project has desalination technology that allows the implementation of future functionalities to guarantee the continuous efficiency of the process.

### Sustainability criteria

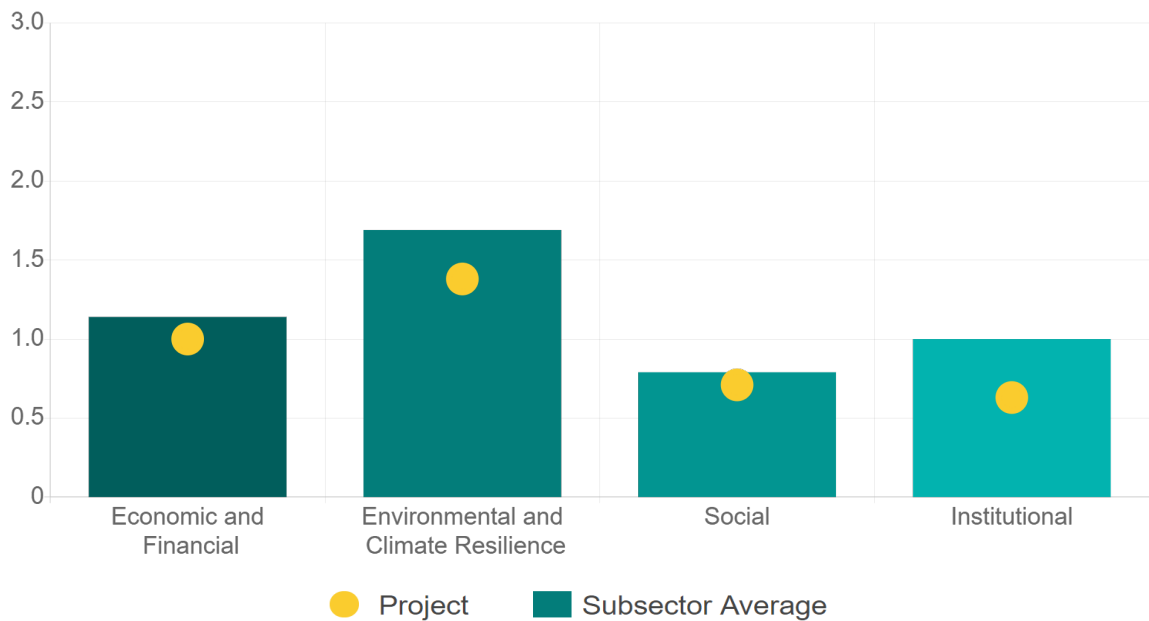
	NA	T1	T2	T3
Alignment with national and international strategies				
Sectoral and institutional integration				
Corporate sustainability, management and governance				
Transparency and anti-corruption protocols				
Legal requirements and compliance with social and environmental policies				
Development of more sustainable technologies and capacities				
Knowledge transfer in matters related to sustainability				
Pre-existing conditions and their monitoring				

**Source of this project:** Cost Benefit Analysis / Environmental Impact Assessment / Physical and Economic Sustainability Study / Tendering process documents

SECTOR:	SUBSECTOR:	STAGE ANALYZED:	YEAR OF UPDATE:
Water and Environment	Water Supply	Operation	2025

Comparison of this project vs other projects of the same subsector

(Number of projects included: 2)



Methodological framework defined by the Inter-American Development Bank (IDB)

[View](#)



**HACIENDA**  
SECRETARÍA DE HACIENDA Y CRÉDITO PÚBLICO

**BANBRAS**  
BANCO NACIONAL DE OBRAS Y SERVICIOS PÚBLICOS S.N.C.

**IDB**  
Inter-American Development Bank

**cooperación alemana**  
DEUTSCHE ZUSAMMENARBEIT

**giz**  
Deutsche Gesellschaft für Internationale Zusammenarbeit (GIZ) GmbH

**PROJECT:** 0010 Desalinization Plant of Guaymas and Empalme, Sonora

SECTOR:	SUBSECTOR:	STAGE ANALYZED:	YEAR OF UPDATE:
Water and Environment	Water Supply	Operation	2025

This section aims to present the potential alignment of the infrastructure project with the 17 Sustainable Development Goals (SDGs) of the 2030 Agenda. The relevance of this exercise resides in that it provides information to the actors of the infrastructure ecosystem for decision-making in investment that considers and promotes sustainable development.

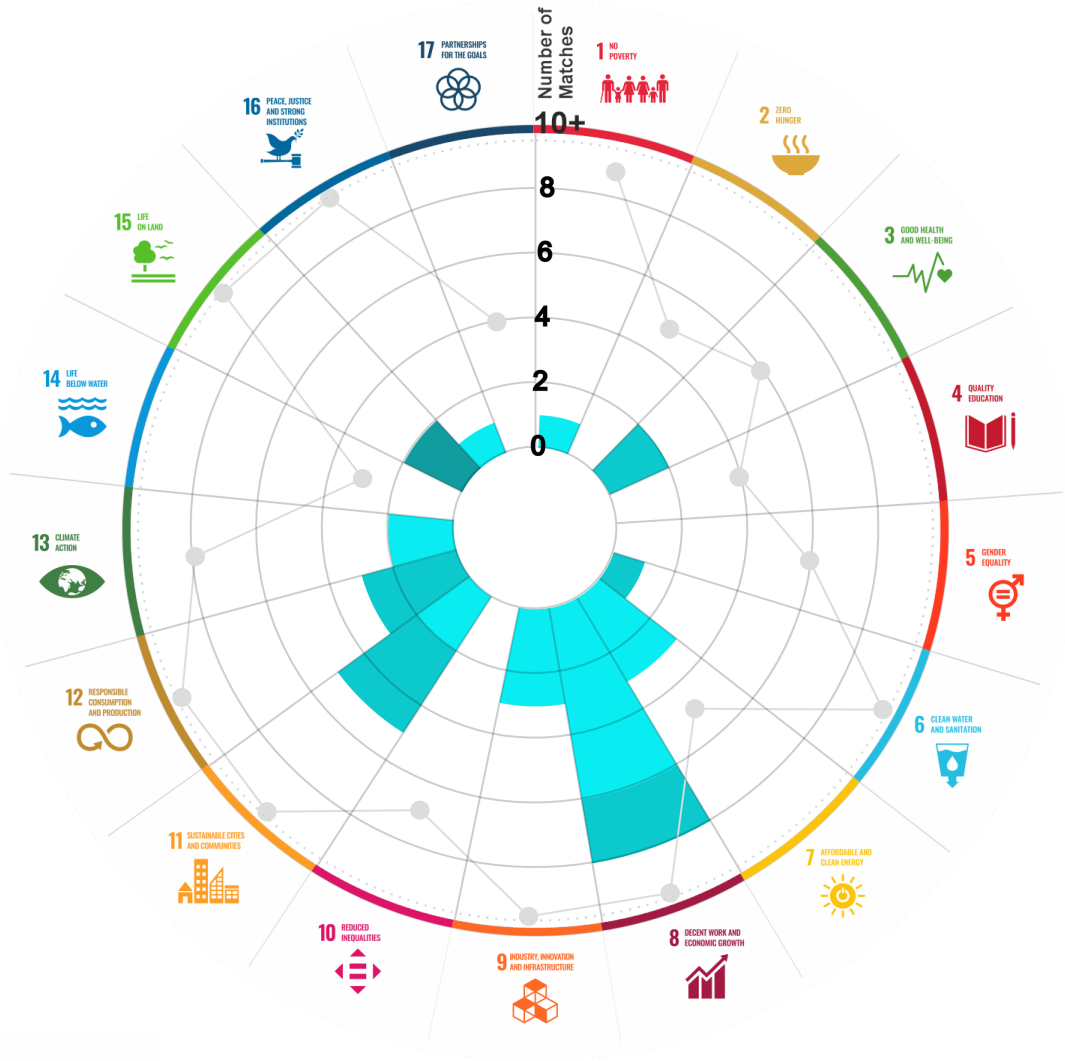
Reading guide [View](#)

## 1. ALIGNMENT BY SUBSECTOR

**6** CLEAN WATER AND SANITATION

**9** INDUSTRY, INNOVATION AND INFRASTRUCTURE

## 2. ALIGNMENT BY SDG



## 3. ALIGNMENT BY CRITERIA AND TARGETS

[View](#)

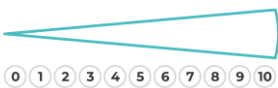


Explanation of the alignment of the sustainability criteria and the SDGs.

[View](#)



The tonality of the bars represents the level of detail of the information available from the IDB criteria and its potential alignment for each SDG, based on the scale: N.A., TIER 1, TIER 2 or TIER 3.



Number of times the project information coincides with the alignment of the IDB criteria and the SDGs.




Approximate reference to the number of maximum alignments a project can have between the IDB criteria and the targets of the SDGs.

## PROJECT

DESIGN, CONSTRUCTION, EQUIPMENT, INSTALLATION, OPERATION, MAINTENANCE AND EXPLOITATION OF THE DESALINIZATION PLANT OF THE CITIES OF GUAYMAS AND EMPALME, IN SONORA.

SECTOR: WATER AND ENVIRONMENT  
SUBSECTOR: WATER SUPPLY

Type of Investment: Brownfield

 Banobras/Fonadin involvement

Short Name of the Project: 0010 Desalinization Plant of Guaymas and Empalme, Sonora

Contract Currency:

Mexican Pesos MXN

Estimated Investment MXN

\$ 738,100,000

Estimated Investment USD

\$ 39,897,297

Exchange rate (USD/MXN) used by the Ministry of Finance for the economic plan 2025 \$ 18.5

### DESCRIPTION

The project consists in the design, construction, equipment, installation, operation, maintenance and exploitation of the desalinization plant of Guaymas and Empalme, in Sonora, which will have beach water wells, desalinization plant, inverse osmosis ultrafiltration, energy recovery system, post treatment, dosage of CO2, dosage of calcium hydroxide, auxiliary equipment, automatic control system, neutralize effluents system, membranes chemical cleaning system, potable water storage tank, potable water conduction line, pumping water system, water hammer control system, discharge brine line, electricity supply line.

Contract Scope: Design, Construction, Equipment, Installation, Operation, Maintenance, Exploitation

Type of Project: Public / Private

Selection Process: International Open Tender

Term: 20 years

Type of Contract: Federal PPP

Payment Source: Mixed

Asset (s): Desalinisation Plant 200 litres per second (l/s)

### GEOLOCATION



### SPONSOR

#### Entity

Comisión Nacional del Agua

#### Department

Comisión Estatal del Agua de Sonora

### TIMELINE



Email: [proyectosmexico@banobras.gob.mx](mailto:proyectosmexico@banobras.gob.mx)



**SHCP**

SECRETARÍA DE HACIENDA  
Y CRÉDITO PÚBLICO

**BANOBRAS**

BANCO NACIONAL DE OBRAS  
Y SERVICIOS PÚBLICOS S.N.C.