

PROJECT: 0994 Agua para Campeche: Chiná Aqueduct and Campeche Waterway

SECTOR:
Water and Environment

SUBSECTOR:
Water Supply

STAGE ANALYZED:
Execution

YEAR OF UPDATE:
2025

[Guide to read this datasheet](#)



Project's sustainability summary: The project, which involves replacing the Chiná-Jardines Supply Line and constructing the Acuaférico in San Francisco de Campeche, aims to improve and increase the potable water supply, delivering 1,300 l/s to benefit over 250,000 inhabitants. The system will operate by gravity flow, thus ensuring efficient operation and a reduction in energy consumption.



ECONOMIC AND FINANCIAL SUSTAINABILITY

EXAMPLE OF GOOD PRACTICES

The project will generate savings in healthcare costs for the population by reducing waterborne diseases, and it will free up financial resources for families by eliminating the need to purchase water from alternative sources (water trucks/tankers).

Sustainability criteria

	NA	T1	T2	T3
Economic and social returns				
Creation of employment opportunities and boost local productivity				
Financial sustainability of assets				
Detailed risk analysis				
Cash flow transparency and creditworthiness				
Infrastructure asset maintenance and optimal use				
Sustainability incentives				



ENVIRONMENTAL SUSTAINABILITY AND CLIMATE RESILIENCE

EXAMPLE OF GOOD PRACTICES

The project's design prioritizes energy sustainability by utilizing gravity flow in the system, which ensures efficient operation and reduces the need for constant pumping, thereby minimizing energy consumption.

Sustainability criteria

	NA	T1	T2	T3
Greenhouse gas emissions				
Climate risks, resilience and disaster risk management				
Impacts on biodiversity and native flora and fauna in the region				
Environmental impact of the Project				
Control and monitoring of pollutants				
Efficient use of resources and recycling strategies				
Efficient use of energy and renewable sources				
Preservation and enhancement of public spaces				



SOCIAL SUSTAINABILITY

EXAMPLE OF GOOD PRACTICES

The project will facilitate access to basic services in the area of influence by improving the water supply for domestic, commercial, and industrial uses.

Sustainability criteria

	NA	T1	T2	T3
Reduction of poverty and access to basic services				
Integration of communities and other interested parties				
Integration of people with disabilities or special needs				
Effects of the project in the security of the region and in the health of workers and nearby communities				
Compliance with human and labor rights				
Gender inclusion and women's economic empowerment through the project				
Equal distribution of benefits and compensations to communities				



INSTITUTIONAL SUSTAINABILITY

EXAMPLE OF GOOD PRACTICES

The project lists and details how compliance with the applicable environmental laws and policies will be achieved, as well as the national and sectoral plans and programs with which it is aligned.

Sustainability criteria

	NA	T1	T2	T3
Alignment with national and international strategies				
Sectoral and institutional integration				
Transparency and anti-corruption protocols				
Legal requirements and compliance with social and environmental policies				
Development of more sustainable technologies and capacities				
Knowledge transfer in matters related to sustainability				
Pre-existing conditions and their monitoring				

Source of this project: Budget Transparency - Real del Monte - 2516B000048 / Cost-Benefit Analysis: Replacement of the Chiná - Jardines Supply Line and Construction of the Acuaférico of San Francisco de Campeche - 833033 / Award Website Compras MX - AO-16-B00-016B00985-N-200-2025 / Tender site Compras MX - LO-16-B00-016B00985-N-138-2025 / Project Video - Start of Works: Campeche Aqueduct / Environmental Impact Statement (EIS) - 04CA2025HD003 / Environmental Impact Assessment Resolution - 04Show more...

SECTOR:
Water and Environment

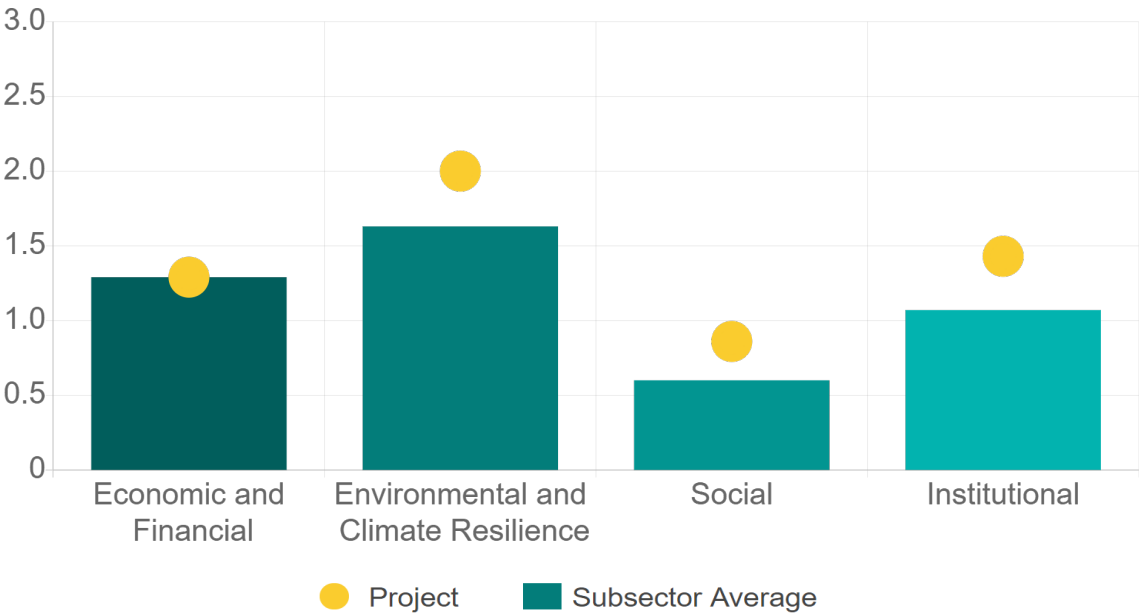
SUBSECTOR:
Water Supply

STAGE ANALYZED:
Execution

YEAR OF UPDATE:
2025

Comparison of this project vs other projects of the same subsector

(Number of projects included: 2)



Methodological framework
defined by the Inter-
American Development
Bank (IDB)

View



HACIENDA
SECRETARÍA DE HACIENDA Y CRÉDITO PÚBLICO

BANBRAS
BANCO NACIONAL DE OBRAS Y SERVICIOS PÚBLICOS S.N.C.

IDB
Inter-American
Development Bank

**cooperación
alemana**
DEUTSCHE ZUSAMMENARBEIT

giz Deutsche Gesellschaft
für Internationale
Zusammenarbeit (GIZ) GmbH

PROJECT: 0994 Agua para Campeche: Chiná Aqueduct and Campeche Waterway

SECTOR:
Water and Environment

SUBSECTOR:
Water Supply

STAGE ANALYZED:
Execution

YEAR OF UPDATE:
2025

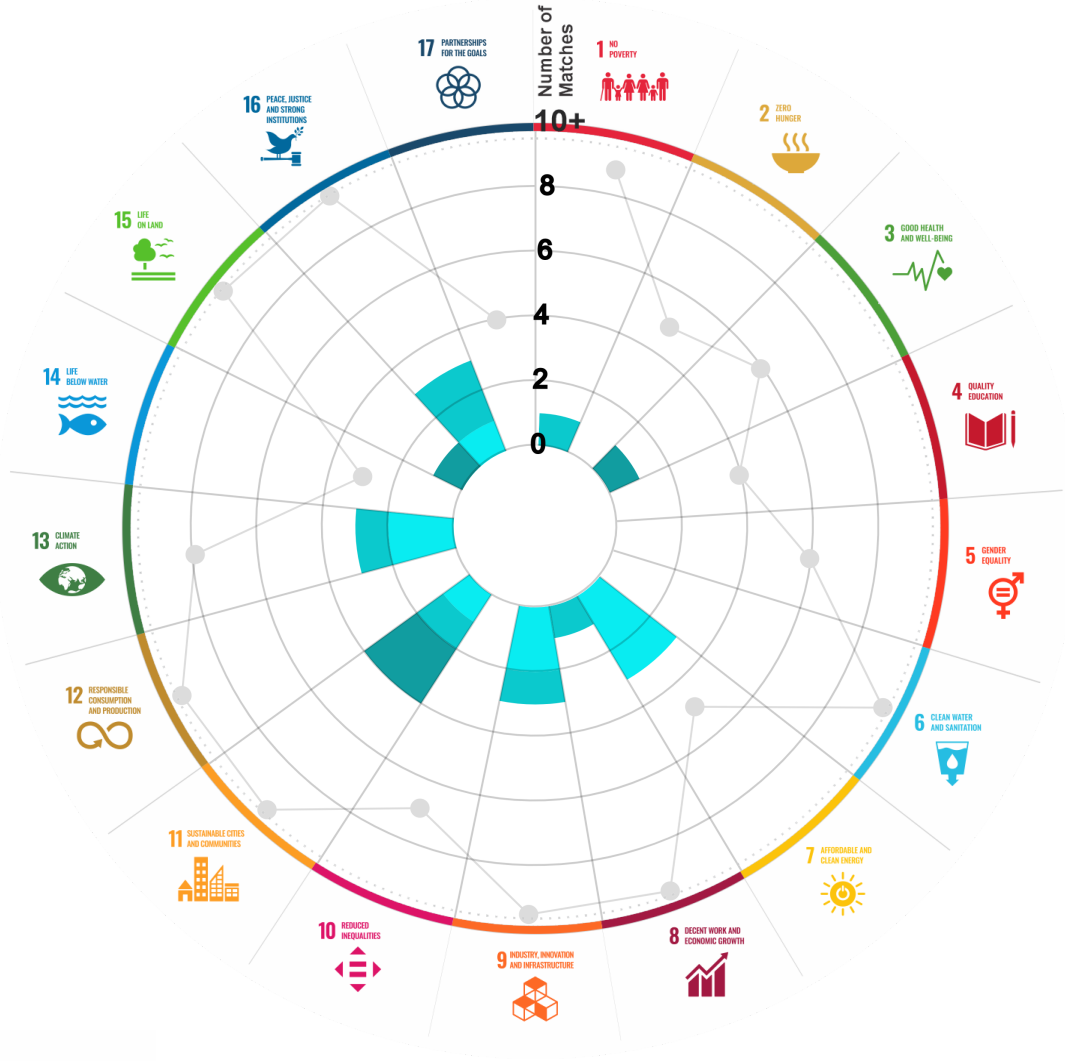
This section aims to present the potential alignment of the infrastructure project with the 17 Sustainable Development Goals (SDGs) of the 2030 Agenda. The relevance of this exercise resides in that it provides information to the actors of the infrastructure ecosystem for decision-making in investment that considers and promotes sustainable development.

Reading guide [View](#)

1. ALIGNMENT BY SUBSECTOR



2. ALIGNMENT BY SDG



3. ALIGNMENT BY CRITERIA AND TARGETS

[View](#)

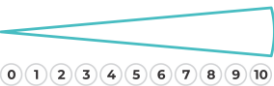


Explanation of the alignment of the sustainability criteria and the SDGs.

[View](#)



The tonality of the bars represents the level of detail of the information available from the IDB criteria and its potential alignment for each SDG, based on the scale: N.A., TIER 1, TIER 2 or TIER 3.



Number of times the project information coincides with the alignment of the IDB criteria and the SDGs.



Approximate reference to the number of maximum alignments a project can have between the IDB criteria and the targets of the SDGs.

PROJECT

CONSTRUCTION OF THE CHINÁ AQUEDUCT AND WATERWAY IN THE STATE OF CAMPECHE.

SECTOR: WATER AND ENVIRONMENT
SUBSECTOR: WATER SUPPLY

Type of Investment: Greenfield

Macroproject: Infrastructure Projects of the National Water Plan

Short Name of the Project: 0994 Agua para Campeche: Chiná Aqueduct and Campeche Waterway

Contract Currency:
Mexican Pesos MXN

Estimated Investment MXN
\$ 818,970,000

Estimated Investment USD
\$ 44,268,648

Exchange rate (USD/MXN) used by the
Ministry of Finance for the economic plan
2025 \$ 18.5

DESCRIPTION

The project involves replacing the Chiná-Jardines water supply line and constructing the San Francisco de Campeche Aqueduct in Campeche. It seeks to increase the drinking water supply to the communities of San Francisco de Campeche and Chiná-Jardines, benefiting 250,000 people.

Contract Scope: Construction

Type of Project: Public

Selection Process: Direct Awarding

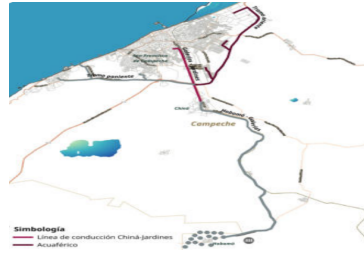
Term:

Type of Contract: Public Works

Payment Source:

Asset (s):

GEOLOCATION



SPONSOR

Entity

Comisión Nacional del Agua

Department

Subdirección General de Agua Potable, Drenaje y
Saneamiento

TIMELINE



Email: proyectosmexico@banobras.gob.mx



SHCP
SECRETARÍA DE HACIENDA
Y CRÉDITO PÚBLICO

BANOBRAS
BANCO NACIONAL DE OBRAS
Y SERVICIOS PÚBLICOS S.N.C.