

PROJECT: 0087 San Luis Potosi East Bypass**SECTOR:**
Transport**SUBSECTOR:**
Highways / bridges**STAGE ANALYZED:**
Operation**YEAR OF UPDATE:**
2025[Guide to read this datasheet](#)

Project's sustainability summary: The project aims to save time and distance in the transfers that link the highways of San Luis Potosi and improve the connection of the Gulf with the Pacific, and the North with the South of the country. Additionally, it considers practices related to wildlife protection, as well as a social benefit program.



ECONOMIC AND FINANCIAL SUSTAINABILITY

EXAMPLE OF GOOD PRACTICES

The project involves job creation and economic benefit generated by the construction and operation of its sections.

Sustainability criteria

| | NA | T1 | T2 | T3 |
|---|----|----|----|----|
| Economic and social returns | | | | |
| Creation of employment opportunities and boost local productivity | | | | |
| Financial sustainability of assets | | | | |
| Detailed risk analysis | | | | |
| Cash flow transparency and creditworthiness | | | | |
| Infrastructure asset maintenance and optimal use | | | | |
| Sustainability incentives | | | | |



ENVIRONMENTAL SUSTAINABILITY AND CLIMATE RESILIENCE

EXAMPLE OF GOOD PRACTICES

There are programs related to reforestation, wildlife crossings, as well as species rescue and relocation

Sustainability criteria

| | NA | T1 | T2 | T3 |
|--|----|----|----|----|
| Greenhouse gas emissions | | | | |
| Climate risks, resilience and disaster risk management | | | | |
| Impacts on biodiversity and native flora and fauna in the region | | | | |
| Environmental impact of the Project | | | | |
| Control and monitoring of pollutants | | | | |
| Efficient use of resources and recycling strategies | | | | |
| Efficient use of energy and renewable sources | | | | |
| Preservation or enhancement of public spaces | | | | |



SOCIAL SUSTAINABILITY

EXAMPLE OF GOOD PRACTICES

A school breakfast program is being considered for the initial school levels in nearby localities, along with nutritional monitoring and medical care.

Sustainability criteria

| | NA | T1 | T2 | T3 |
|--|----|----|----|----|
| Reduction of poverty and access to basic services | | | | |
| Integration of communities and other interested parties | | | | |
| Integration of people with disabilities or special needs | | | | |
| Effects of the project in the security of the region and in the health of workers and nearby communities | | | | |
| Compliance with human and labor rights | | | | |
| Gender inclusion and women's economic empowerment through the project | | | | |
| Equal distribution of benefits and compensations to communities | | | | |



INSTITUTIONAL SUSTAINABILITY

EXAMPLE OF GOOD PRACTICES

An environmental information and training program is being considered.

Sustainability criteria

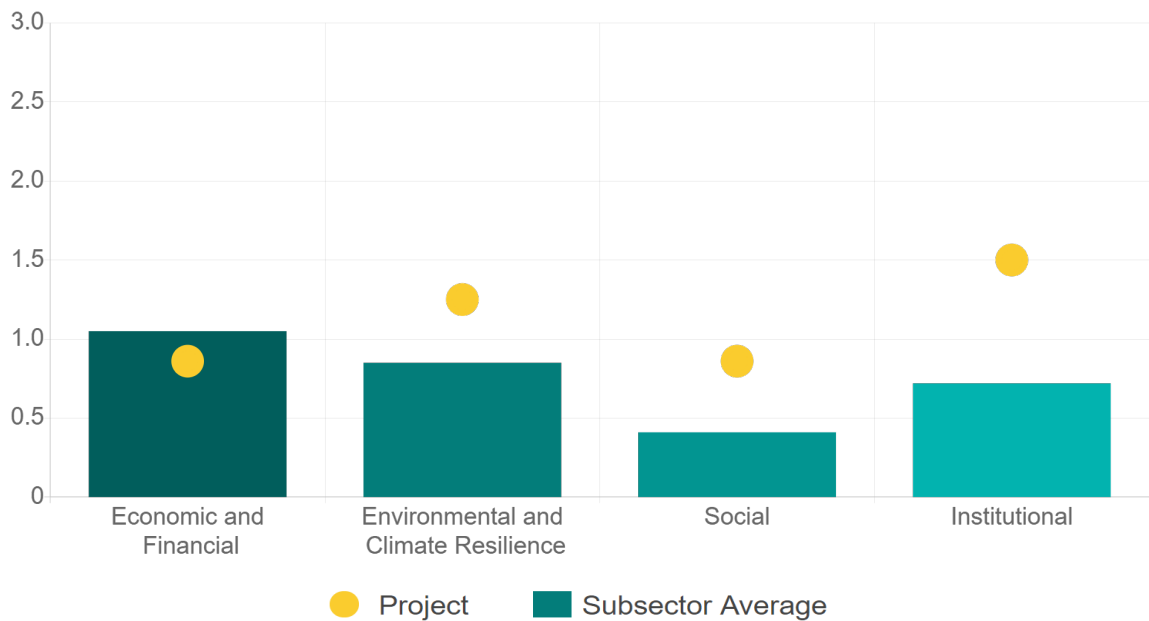
| | NA | T1 | T2 | T3 |
|--|----|----|----|----|
| Alignment with national and international strategies | | | | |
| Sectoral and institutional integration | | | | |
| Corporate sustainability, management and governance | | | | |
| Transparency and anti-corruption protocols | | | | |
| Legal requirements and compliance with social and environmental policies | | | | |
| Development of more sustainable technologies and capacities | | | | |
| Knowledge transfer in matters related to sustainability | | | | |
| Pre-existing conditions and their monitoring | | | | |

Source of this project: Code of Conduct / Project website / Code of ethics / Sustainability policy / Concession title / 1st modification to the concession / 2nd modificación al Título de Concesión / 3rd modification to the concession / 6th modification of the concession / 7th modification to the concession / 8th modification to the concession / MIA 24SL2023V0037

| SECTOR: | SUBSECTOR: | STAGE ANALYZED: | YEAR OF UPDATE: |
|-----------|--------------------|-----------------|-----------------|
| Transport | Highways / bridges | Operation | 2025 |

Comparison of this project vs other projects of the same subsector

(Number of projects included: 67)



Methodological framework defined by the Inter-American Development Bank (IDB)

[View](#)



HACIENDA
SECRETARÍA DE HACIENDA Y CRÉDITO PÚBLICO

BANBRAS
BANCO NACIONAL DE OBRAS Y SERVICIOS PÚBLICOS S.N.C.

IDB
Inter-American Development Bank

cooperación alemana
DEUTSCHE ZUSAMMENARBEIT

giz
Deutsche Gesellschaft für Internationale Zusammenarbeit (GIZ) GmbH

PROJECT: 0087 San Luis Potosi East Bypass

| SECTOR: | SUBSECTOR: | STAGE ANALYZED: | YEAR OF UPDATE: |
|-----------|--------------------|-----------------|-----------------|
| Transport | Highways / bridges | Operation | 2025 |

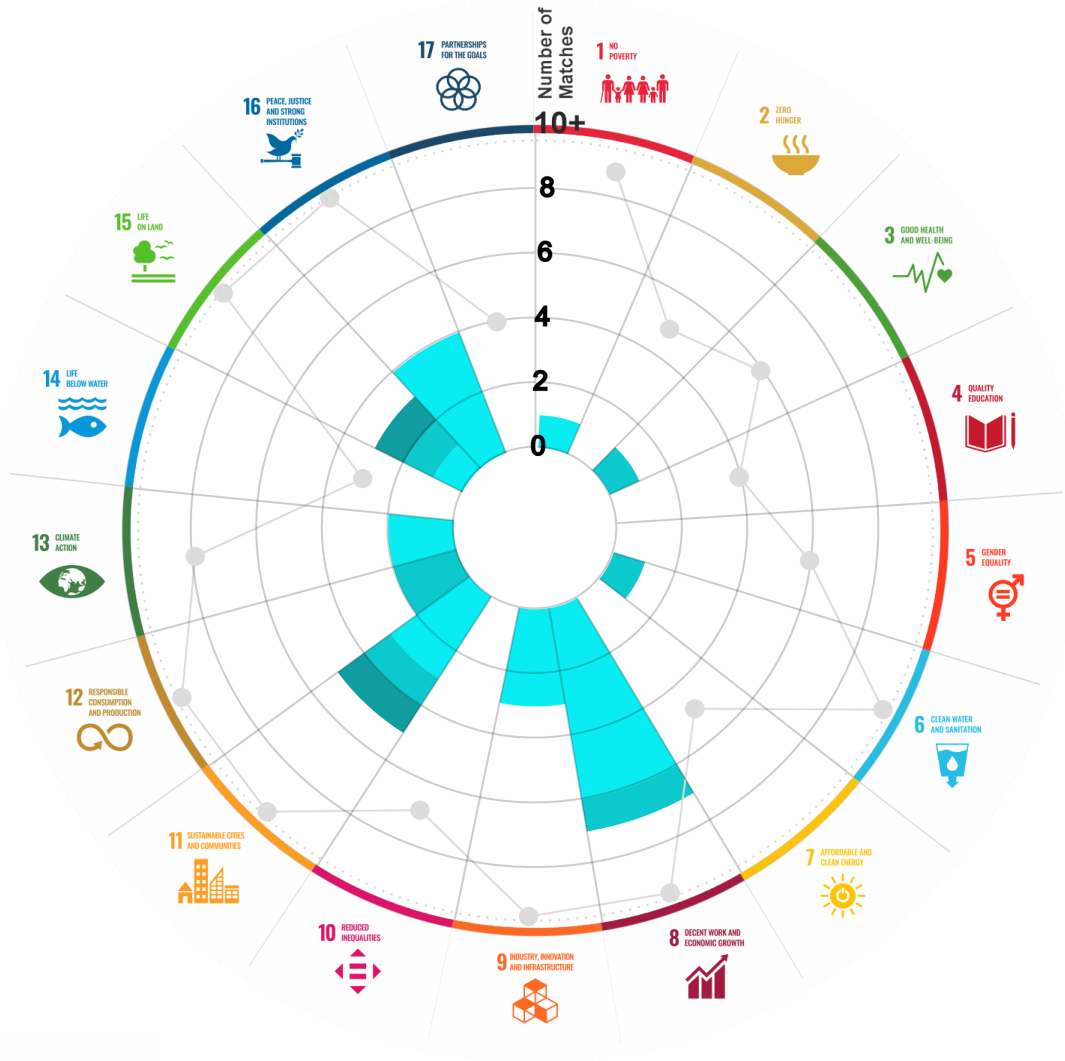
This section aims to present the potential alignment of the infrastructure project with the 17 Sustainable Development Goals (SDGs) of the 2030 Agenda. The relevance of this exercise resides in that it provides information to the actors of the infrastructure ecosystem for decision-making in investment that considers and promotes sustainable development.

Reading guide [View](#)

1. ALIGNMENT BY SUBSECTOR



2. ALIGNMENT BY SDG



3. ALIGNMENT BY CRITERIA AND TARGETS

[View](#)



Explanation of the alignment of the sustainability criteria and the SDGs.

[View](#)



The tonality of the bars represents the level of detail of the information available from the IDB criteria and its potential alignment for each SDG, based on the scale: N.A., TIER 1, TIER 2 or TIER 3.



Number of times the project information coincides with the alignment of the IDB criteria and the SDGs.




Approximate reference to the number of maximum alignments a project can have between the IDB criteria and the targets of the SDGs.

PROJECT

CONSTRUCTION, OPERATION, MAINTENANCE, CONSERVATION AND EXPLOITATION OF THE SAN LUIS POTOSI EASTERN BYPASS, IN THE STATE OF SAN LUIS POTOSI.

SECTOR: TRANSPORT
SUBSECTOR: HIGHWAYS / BRIDGES

Type of Investment: Brownfield

 Banobras/Fonadin involvement

Short Name of the Project: 0087 San Luis Potosi East Bypass

Contract Currency:
Mexican Pesos MXN

Estimated Investment MXN
N.A.

Estimated Investment USD
N.A.

Exchange rate (USD/MXN) used by the Ministry of Finance for the economic plan 2025 \$ 18.5

DESCRIPTION

CONCESSION (Oct. 15, 1990). Build, operate, exploit, conserve and maintain the 33.7 km San Luis Potosi eastern bypass. The term of the concession is 8 years 6 months.

FIRST MODIFICATION (Nov. 16, 1994). SECOND MODIFICATION (Nov. 30, 2006). THIRD MODIFICATION (Nov. 30, 2007). FOURTH MODIFICATION (Aug. 29, 2008). FIFTH MODIFICATION (Aug. 31, 2009). SIXTH MODIFICATION (Oct. 14, 2037). SEVENTH MODIFICATION (Feb. 26, 2020). EIGHTH MODIFICATION (Jan. 8, 2021).

Contract Scope: Construction, Operation, Maintenance, Conservation, Exploitation

Type of Project: Public / Private

Selection Process: Open Domestic Bidding

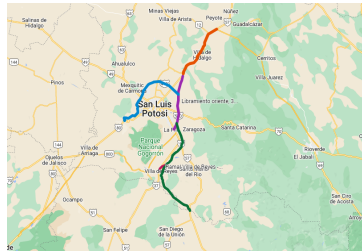
Term: 47 years

Type of Contract: Concession

Payment Source: Project revenues / Rate

Asset (s): Highway 176.90 KM

GEOLOCATION



SPONSOR



Entity

Secretaría de Infraestructura, Comunicaciones y Transportes

Department

Dirección General de Desarrollo Carretero

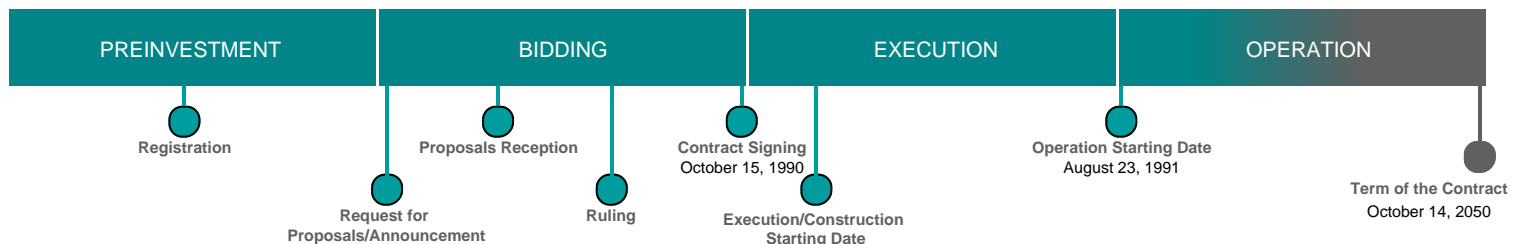
Contact

Fernando Palma Soto / Director General Adjunto de Seguimiento de Concesiones de Autopistas

E-mail

fpalmaso@sct.gob.mx

TIMELINE



Email: proyectosmexico@banobras.gob.mx



SHCP

SECRETARÍA DE HACIENDA
Y CRÉDITO PÚBLICO

BANOBRAS

BANCO NACIONAL DE OBRAS
Y SERVICIOS PÚBLICOS S.N.C.