

**PROJECT:** 0966 La Unidad New Bridge

**SECTOR:**  
Transport

**SUBSECTOR:**  
Highways / bridges

**STAGE ANALYZED:**  
Operation

**YEAR OF UPDATE:**  
2025

[Guide to read this datasheet](#)

**Project's sustainability summary:** The project consists of the construction and operation of a 3.222 km bridge between Isla del Carmen and Isla Aguada, in Campeche, to replace the Puente de la Unidad "Eugenio Echeverría Castellot," which has deteriorated after more than 30 years of use and poses a high structural risk.

**ECONOMIC AND FINANCIAL SUSTAINABILITY**  
EXAMPLE OF GOOD PRACTICES

Sustainability criteria	NA	T1	T2	T3
Economic and social returns				
Creation of employment opportunities and boost local productivity				
Financial sustainability of assets				
Detailed risk analysis				
Cash flow transparency and creditworthiness				
Infrastructure asset maintenance and optimal use				
Sustainability incentives				

**ENVIRONMENTAL SUSTAINABILITY AND CLIMATE RESILIENCE**  
EXAMPLE OF GOOD PRACTICES  
The environmental impact will be reduced compared to the previous bridge, thanks to greater traffic efficiency.

Sustainability criteria	NA	T1	T2	T3
Greenhouse gas emissions				
Climate risks, resilience and disaster risk management				
Impacts on biodiversity and native flora and fauna in the region				
Environmental impact of the Project				
Control and monitoring of pollutants				
Efficient use of resources and recycling strategies				
Efficient use of energy and renewable sources				
Preservation or enhancement of public spaces				

**SOCIAL SUSTAINABILITY**  
EXAMPLE OF GOOD PRACTICES

Sustainability criteria	NA	T1	T2	T3
Reduction of poverty and access to basic services				
Integration of communities and other interested parties				
Integration of people with disabilities or special needs				
Effects of the project in the security of the region and in the health of workers and nearby communities				
Compliance with human and labor rights				
Cultural heritage and indigenous people				
Gender inclusion and women's economic empowerment through the project				
Equal distribution of benefits and compensations to communities				

**INSTITUTIONAL SUSTAINABILITY**  
EXAMPLE OF GOOD PRACTICES

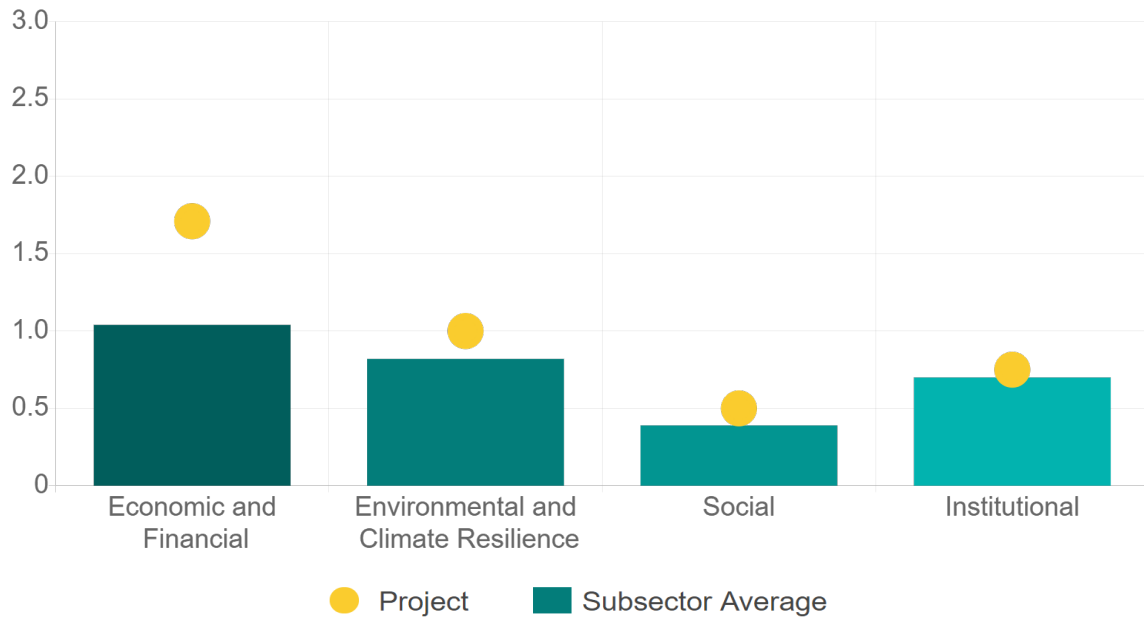
Sustainability criteria	NA	T1	T2	T3
Alignment with national and international strategies				
Sectoral and institutional integration				
Corporate sustainability, management and governance				
Transparency and anti-corruption protocols				
Legal requirements and compliance with social and environmental policies				
Development of more sustainable technologies and capacities				
Knowledge transfer in matters related to sustainability				
Pre-existing conditions and their monitoring				

**Source of this project:** Cost-Benefit Analysis for the Construction of the New Vehicular Bridge "La Unidad" / Concession Title / Information / Video 'La Unidad' Bridge / SICT Press Release: 'La Unidad' Bridge / Transparency and Accountability Report Ministry of Finance 2015-2021 / Environmental Impact Statement "New Unity Bridge" / State Development Plan of the Government of Campeche 2021-2027 / HR Ratings Credit Rating



### Comparison of this project vs other projects of the same subsector

(Number of projects included: 64)



Methodological framework defined by the Inter-American Development Bank (IDB)

[View](#)



**PROJECT:** 0966 La Unidad New Bridge

**SECTOR:**  
Transport

**SUBSECTOR:**  
Highways / bridges

**STAGE ANALYZED:**  
Operation

**YEAR OF UPDATE:**  
2025

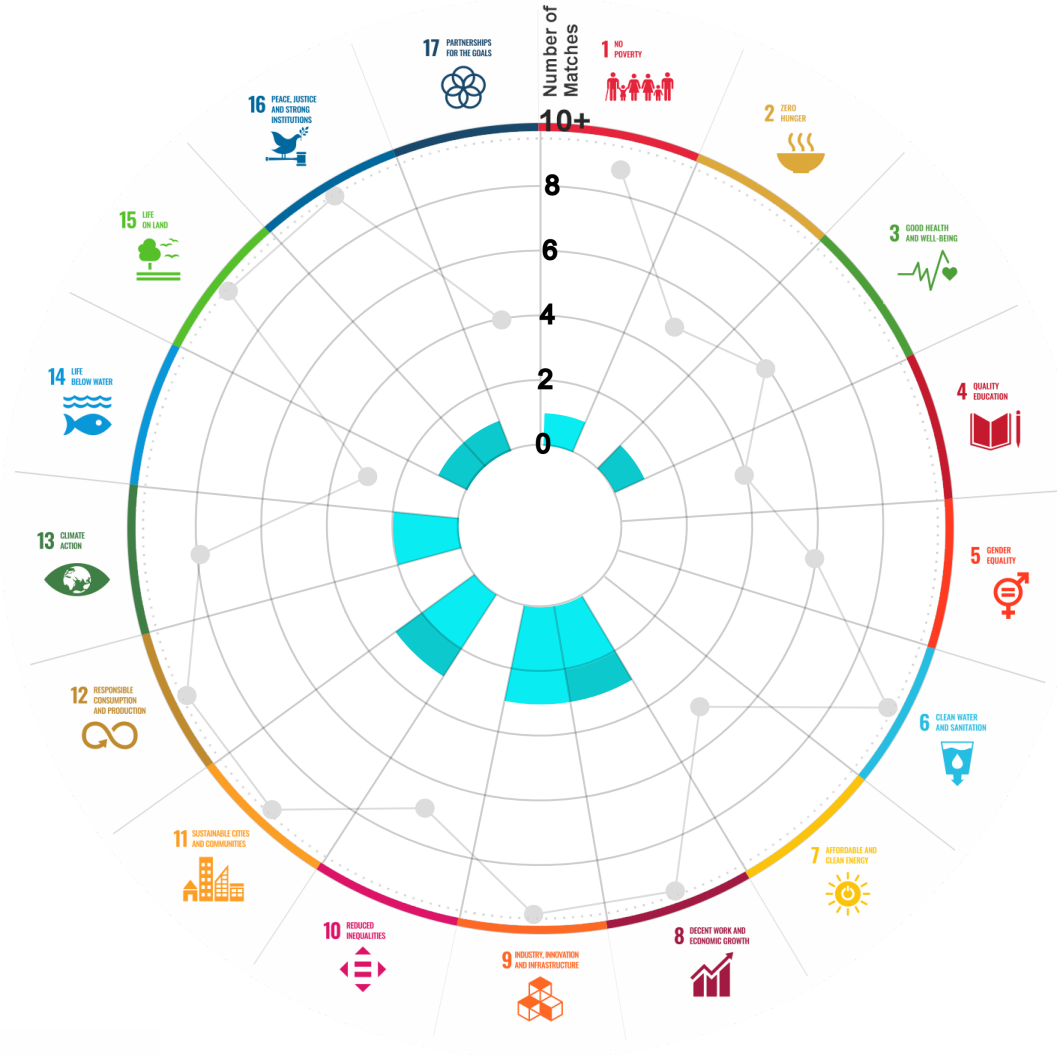
This section aims to present the potential alignment of the infrastructure project with the 17 Sustainable Development Goals (SDGs) of the 2030 Agenda. The relevance of this exercise resides in that it provides information to the actors of the infrastructure ecosystem for decision-making in investment that considers and promotes sustainable development.

Reading guide [View](#)

## 1. ALIGNMENT BY SUBSECTOR



## 2. ALIGNMENT BY SDG



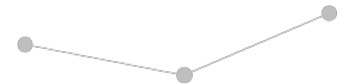
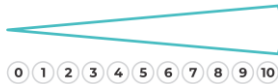
## 3. ALIGNMENT BY CRITERIA AND TARGETS

[View](#)



Explanation of the alignment of the sustainability criteria and the SDGs.

[View](#)



The tonality of the bars represents the level of detail of the information available from the IDB criteria and its potential alignment for each SDG, based on the scale: N.A., TIER 1, TIER 2 or TIER 3.

Number of times the project information coincides with the alignment of the IDB criteria and the SDGs.

Approximate reference to the number of maximum alignments a project can have between the IDB criteria and the targets of the SDGs.