



**PROJECT:** 0908 C-MRO "Tepic-Compostela Highway" and "Jala-Compostela-Las Varas Highway and Branch to Compostela", "Compostela-Las Varas" section

<b>SECTOR:</b> Transport	<b>SUBSECTOR:</b> Highways / bridges	<b>STAGE ANALYZED:</b> Execution	<b>YEAR OF UPDATE:</b> 2023
-----------------------------	---	-------------------------------------	--------------------------------

[Guide to read this datasheet](#)

**Project's sustainability summary:** The project's objective is to build the Tepic-Las Varas highway to connect it with the Jala-Compostela-Bahía de Banderas highway, thereby improving Tepic's connection with the most important tourist area in the state of Nayarit. Likewise, it seeks to strengthen the connectivity between Compostela and Tepic, by improving transfer times and the safety of people and goods.

**ECONOMIC AND FINANCIAL SUSTAINABILITY**

EXAMPLE OF GOOD PRACTICES

Sustainability criteria	NA	T1	T2	T3
Economic and social returns				
Creation of employment opportunities and boost local productivity				
Financial sustainability of assets				
Detailed risk analysis				
Cash flow transparency and creditworthiness				
Infrastructure asset maintenance and optimal use				
Sustainability incentives				

**ENVIRONMENTAL SUSTAINABILITY AND CLIMATE RESILIENCE**

EXAMPLE OF GOOD PRACTICES

Sustainability criteria	NA	T1	T2	T3
Greenhouse gas emissions				
Climate risks, resilience and disaster risk management				
Impacts on biodiversity and native flora and fauna in the region				
Environmental impact of the Project				
Control and monitoring of pollutants				
Efficient use of resources and recycling strategies				
Efficient use of energy and renewable sources				
Preservation and enhancement of public spaces				

**SOCIAL SUSTAINABILITY**

EXAMPLE OF GOOD PRACTICES

Sustainability criteria	NA	T1	T2	T3
Reduction of poverty and access to basic services				
Integration of communities and other interested parties				
Integration of people with disabilities or special needs				
Effects of the project in the security of the region and in the health of workers and nearby communities				
Compliance with human and labor rights				
Cultural heritage and indigenous people				
Gender inclusion and women's economic empowerment through the project				
Equal distribution of benefits and compensations to communities				

**INSTITUTIONAL SUSTAINABILITY**

EXAMPLE OF GOOD PRACTICES

Sustainability criteria	NA	T1	T2	T3
Alignment with national and international strategies				
Sectoral and institutional integration				
Corporate sustainability, management and governance				
Transparency and anti-corruption protocols				
Legal requirements and compliance with social and environmental policies				
Development of more sustainable technologies and capacities				
Knowledge transfer in matters related to sustainability				
Pre-existing conditions and their monitoring				

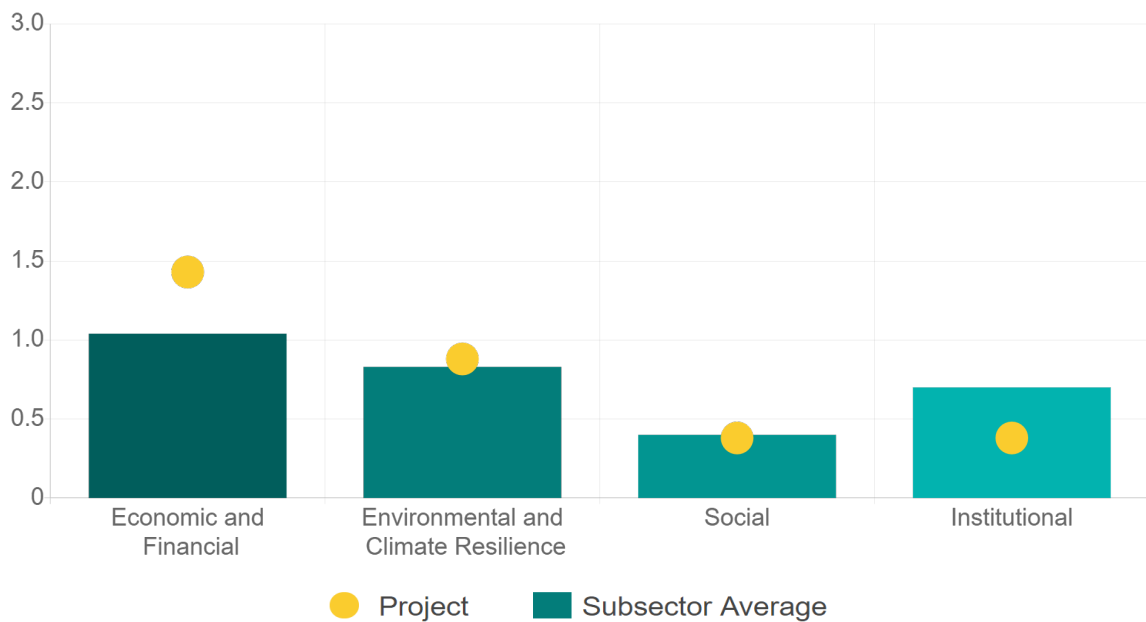
**Source of this project:** Circular Letter, Modification of Base 32 / Opening Act C-MRO Tepic-Compostela / Deferral of Event Dates / Modification of Date of the Act of Reading of the Opinion / Technical Opinion Reading Minutes / Minutes of Reading of Economic Offers and Judgment / Circular, Deferral of clarification meeting dates / Minutes Board of Clarifications / Annex 1 Minutes of the Clarifications Meeting / Circular, CMRO / Circular, Annex "CoShow more..."




<b>SECTOR:</b> Transport	<b>SUBSECTOR:</b> Highways / bridges	<b>STAGE ANALYZED:</b> Execution	<b>YEAR OF UPDATE:</b> 2023
-----------------------------	---	-------------------------------------	--------------------------------

### Comparison of this project vs other projects of the same subsector

(Number of projects included: 62)



Methodological framework defined by the Inter-American Development Bank (IDB)



[View](#)



**PROJECT:** 0908 C-MRO "Tepic-Compostela Highway" and "Jala-Compostela-Las Varas Highway and Branch to Compostela", "Compostela-Las Varas" section

<b>SECTOR:</b> Transport	<b>SUBSECTOR:</b> Highways / bridges	<b>STAGE ANALYZED:</b> Execution	<b>YEAR OF UPDATE:</b> 2023
-----------------------------	---	-------------------------------------	--------------------------------

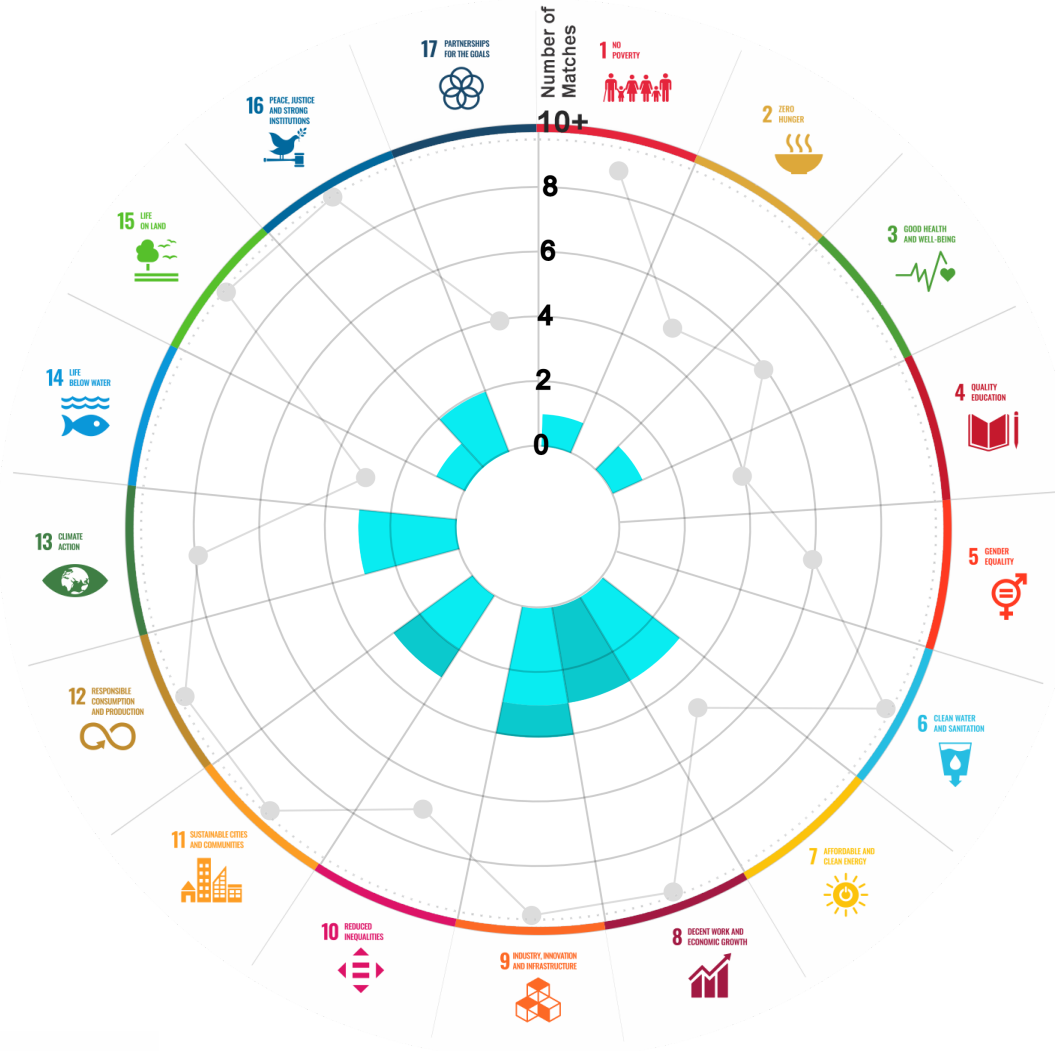
This section aims to present the potential alignment of the infrastructure project with the 17 Sustainable Development Goals (SDGs) of the 2030 Agenda. The relevance of this exercise resides in that it provides information to the actors of the infrastructure ecosystem for decision-making in investment that considers and promotes sustainable development.

Reading guide [View](#)

### 1. ALIGNMENT BY SUBSECTOR



### 2. ALIGNMENT BY SDG

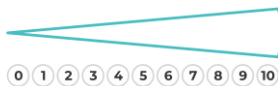


**3. ALIGNMENT BY CRITERIA AND TARGETS**

[View](#)

Explanation of the alignment of the sustainability criteria and the SDGs.

[View](#)



The tonality of the bars represents the level of detail of the information available from the IDB criteria and its potential alignment for each SDG, based on the scale: N.A., TIER 1, TIER 2 or TIER 3.

Number of times the project information coincides with the alignment of the IDB criteria and the SDGs.

Approximate reference to the number of maximum alignments a project can have between the IDB criteria and the targets of the SDGs.



## PROJECT

CONSTRUCTION, MAINTENANCE, REHABILITATION AND OPERATION OF THE "TEPIC-COMPOSTELA HIGHWAY" AND SEGMENT 2, "COMPOSTELA-LAS VARAS" SECTION OF THE "JALA-COMPOSTELA-LAS VARAS HIGHWAY AND RAMAL TO COMPOSTELA", IN THE STATE OF NAYARIT.

SECTOR: TRANSPORT  
SUBSECTOR: HIGHWAYS / BRIDGES

<b>Type of Investment:</b>	Greenfield		
<b>Short Name of the Project:</b>	0908 C-MRO "Tepic-Compostela Highway" and "Jala-Compostela-Las Varas Highway and Branch to Compostela", "Compostela-Las Varas" section		
<b>Contract Currency:</b>	<b>Estimated Investment MXN</b>	<b>Estimated Investment USD</b>	Exchange rate (USD/MXN) used by the Ministry of Finance for the economic plan 2023 \$ 20.6
Mexican Pesos MXN	\$ 4,914,797,021	\$ 238,582,379	

### DESCRIPTION

The project consists of the construction, maintenance, rehabilitation and operation under performance standards of 55.4 km of highways:

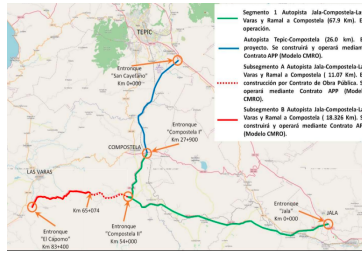
- i) Construction, maintenance, rehabilitation and operation of the "Tepic-Compostela Highway", approximately 26 km type A2
- ii) Construction (continuation and completion of construction), maintenance, rehabilitation and operation of sub-segment B of segment 2 "Compostela-Las Varas", of the "Jala-Compostela-Las Varas Highway and Branch to Compostela", includes the Junction El Capomo, approximately 18.3 km type A4, from km 65+074 to km 83+400 of said highway
- iii) Maintenance, rehabilitation and operation of sub-segment A of segment 2 "Compostela-Las Varas", of the "Jala-Compostela-Las Varas Highway and Ramal to Compostela", approximately 11 km type A4, from km 54+000 to km 65+074 of said highway.

**Contract Scope:** Construction, Operation, Maintenance

<b>Type of Project:</b>	Public / Private	<b>Selection Process:</b>	International Open Tender	<b>Term:</b>	10 years
<b>Type of Contract:</b>	Federal PPP	<b>Payment Source:</b>	Project revenues / Rate		

**Asset (s):** Highway 55.40 KM

### GEOLOCATION



### SPONSOR



**Entity**  
BANOBRAS/Fiduciario FONADIN

**Department**  
Dirección General Adjunta Fiduciaria

**Contact**  
Sergio Enrique Sánchez Rivera

**E-mail**  
sergio.sanchez@banobras.gob.mx

### TIMELINE



Email: [proyectosmexico@banobras.gob.mx](mailto:proyectosmexico@banobras.gob.mx)



**SHCP**  
SECRETARÍA DE HACIENDA  
Y CRÉDITO PÚBLICO

**BANOBRAS**  
BANCO NACIONAL DE OBRAS  
Y SERVICIOS PÚBLICOS S.N.C.