

**PROJECT:** 0917 North Connection Highway

**SECTOR:**  
Transport

**SUBSECTOR:**  
Highways / bridges

**STAGE ANALYZED:**  
Bidding

**YEAR OF UPDATE:**  
2023

[Guide to read this datasheet](#) 

**Project's sustainability summary:** The purpose of the Highway is to facilitate road connectivity between urban locations with the primary industrial and service-attracting nodes, reducing massive vehicular flows through the most saturated roads in urban locations, reducing costs and transportation times, and allowing greater accessibility to centers of employment.

 **ECONOMIC AND FINANCIAL SUSTAINABILITY**  
EXAMPLE OF GOOD PRACTICES

| Sustainability criteria   | NA | T1 | T2 | T3 |
|---|----|----|----|----|
| Economic and social returns                                       |    | █  |    |    |
| Creation of employment opportunities and boost local productivity |    | █  |    |    |
| Financial sustainability of assets                                |    | █  |    |    |
| Value for money principle   | █  |    |    |    |
| Detailed risk analysis  |    | █  |    |    |
| Cash flow transparency and creditworthiness                       |    | █  |    |    |
| Infrastructure asset maintenance and optimal use                  |    | █  | █  | █  |
| Sustainability incentives   | █  |    |    |    |

 **ENVIRONMENTAL SUSTAINABILITY AND CLIMATE RESILIENCE**  
EXAMPLE OF GOOD PRACTICES

| Sustainability criteria  | NA | T1 | T2 | T3 |
|--|----|----|----|----|
| Greenhouse gas emissions   | █  |    |    |    |
| Climate risks, resilience and disaster risk management           | █  |    |    |    |
| Impacts on biodiversity and native flora and fauna in the region | █  |    |    |    |
| Environmental Impact of the Project                              |    | █  |    |    |
| Control and monitoring of pollutants                             | █  |    |    |    |
| Efficient use of resources and recycling strategies              | █  |    |    |    |
| Efficient use of energy and renewable sources                    | █  |    |    |    |
| Preservation or enhancement of public spaces                     | █  |    |    |    |

 **SOCIAL SUSTAINABILITY**  
EXAMPLE OF GOOD PRACTICES

| Sustainability criteria  | NA | T1 | T2 | T3 |
|--|----|----|----|----|
| Reduction of poverty and access to basic services  | █  |    |    |    |
| Integration of communities and other interested parties  | █  |    |    |    |
| Integration of people with disabilities or special needs   |    | █  |    |    |
| Effects of the project in the security of the region and in the health of workers and nearby communities |    | █  |    |    |
| Compliance with human and labor rights   |    | █  |    |    |
| Cultural heritage and indigenous people  | █  |    |    |    |
| Gender inclusion and women's economic empowerment through the project                                    | █  |    |    |    |
| Equal distribution of benefits and compensations to communities  | █  |    |    |    |

 **INSTITUTIONAL SUSTAINABILITY**  
EXAMPLE OF GOOD PRACTICES

| Sustainability criteria  | NA | T1 | T2 | T3 |
|--|----|----|----|----|
| Alignment with national and international strategies                     |    | █  |    |    |
| Sectoral and institutional integration                                   |    | █  |    |    |
| Transparency of the process  |    | █  | █  |    |
| Corruption and mitigation process  | █  |    |    |    |
| Legal requirements and compliance with social and environmental policies |    | █  |    |    |
| Training development in aspects related to sustainability                | █  |    |    |    |
| Pre-existing conditions and their monitoring                             | █  |    |    |    |

**Source of this project:** Call / Competition Rules / Appendix II Informativo Profile / Concession Title Project / Tender Website / Evaluation Criteria / Trust Guidelines and Contracts / Conventional Penalties / Procedure for Emergency Care / Construction and operation supervision / Operation Requirements / Technical offer / Insurance



### Comparison of this project vs other projects of the same subsector

(Number of projects included: 5)



Methodological framework defined by the Inter-American Development Bank (IDB)

[View](#)



**PROJECT:** 0917 North Connection Highway

**SECTOR:**  
Transport

**SUBSECTOR:**  
Highways / bridges

**STAGE ANALYZED:**  
Bidding

**YEAR OF UPDATE:**  
2023

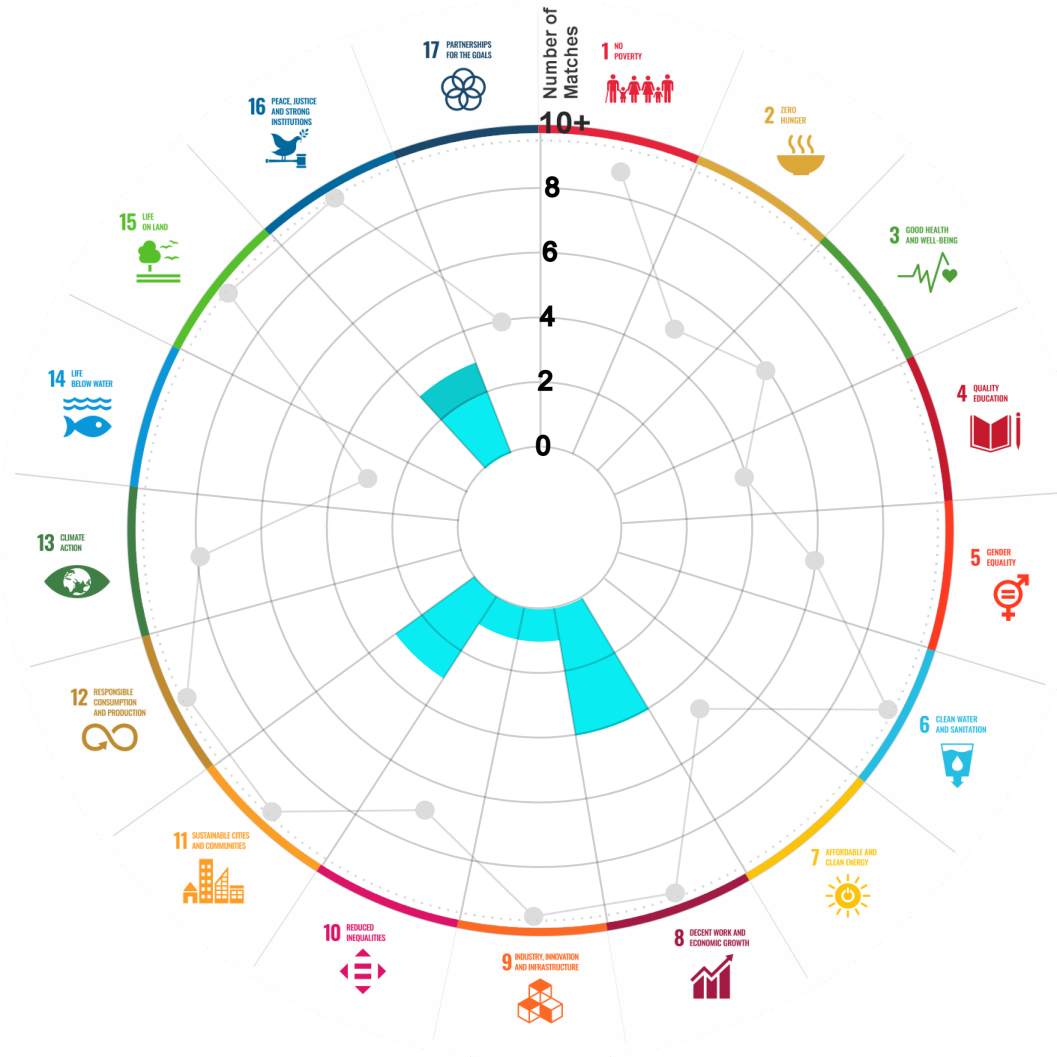
This section aims to present the potential alignment of the infrastructure project with the 17 Sustainable Development Goals (SDGs) of the 2030 Agenda. The relevance of this exercise resides in that it provides information to the actors of the infrastructure ecosystem for decision-making in investment that considers and promotes sustainable development.

Reading guide [View](#)

## 1. ALIGNMENT BY SUBSECTOR



## 2. ALIGNMENT BY SDG



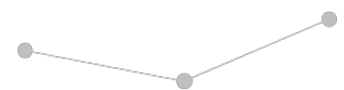
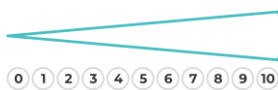
## 3. ALIGNMENT BY CRITERIA AND TARGETS

[View](#)



Explanation of the alignment of the sustainability criteria and the SDGs.

[View](#)



The tonality of the bars represents the level of detail of the information available from the IDB criteria and its potential alignment for each SDG, based on the scale: N.A., TIER 1, TIER 2 or TIER 3.

Number of times the project information coincides with the alignment of the IDB criteria and the SDGs.

Approximate reference to the number of maximum alignments a project can have between the IDB criteria and the targets of the SDGs.

# PROJECT

DESIGN, CONSTRUCTION, OPERATION, MAINTENANCE, CONSERVATION AND EXPLOITATION OF A HIGHWAY CALLED "NICOLÁS ROMERO – CUAUTITLÁN IZCALLI", "NORTH CONNECTION", IN THE STATE OF MEXICO.

SECTOR: TRANSPORT  
SUBSECTOR: HIGHWAYS / BRIDGES

Type of Investment: Greenfield

Short Name of the Project: 0917 North Connection Highway

Contract Currency:  
Mexican Pesos MXN

Estimated Investment MXN  
N.A.

Estimated Investment USD  
N.A.

Exchange rate (USD/MXN) used by the Ministry of Finance for the economic plan 2023 \$ 20.6

## DESCRIPTION

The project consists of the design, construction, operation, maintenance, conservation and exploitation of a road infrastructure, called "Nicolás Romero - Cuautitlán Izcalli", "North Connection", with two traffic lanes, one in each direction, with delimitation and the possibility of operate with 2 lanes of 3.50 meters in one direction, by means of one lane, with a project speed of 80 km/h, a governor slope of 4% and a maximum slope of 6%; the width of the road is 7 meters with a lane of 3.50 meters for each road body, in addition to two exterior boundaries of 3 meters on each side and an interior boundary of 0.5 meters. Two sections will be built, separated by the CFE transmission line, with a total crown width of 14.00 meters. The maximum curvature is 5.5°. The Project is developed within a right-of-way width of 40 meters, with 20 meters on each side from the axis of the highway.

Contract Scope: Design, Construction, Operation, Maintenance, Conservation, Exploitation

Type of Project: Public / Private

Selection Process: International Open Tender

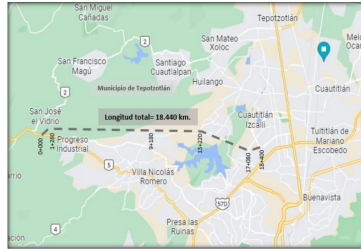
Term: 30 years

Type of Contract: State Concession

Payment Source: Project revenues / Rate

Asset (s): Highway 18.44 KM-A2

## GEOLOCATION



## SPONSOR



### Entity

Gobierno Estatal

### Department

Sistema de Autopistas, Aeropuertos, Servicios Conexos y Auxiliares del Estado de México

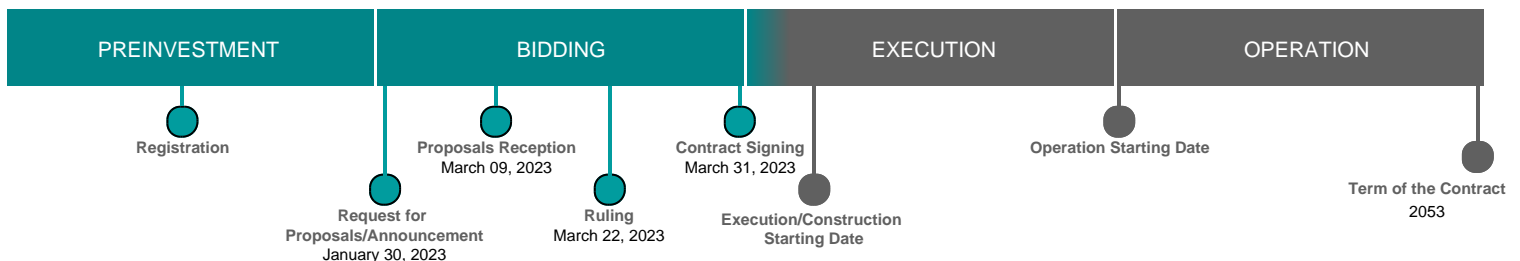
### Contact

Lic. Alberto Tomás Angulo Lara

### E-mail

dg.saascaem@edomex.gob.mx

## TIMELINE



Email: [proyectosmexico@banobras.gob.mx](mailto:proyectosmexico@banobras.gob.mx)



**SHCP**  
SECRETARÍA DE HACIENDA  
Y CRÉDITO PÚBLICO

**BANOBRAS**  
BANCO NACIONAL DE OBRAS  
Y SERVICIOS PÚBLICOS S.N.C.