

**PROJECT:** 0272 Southeastern Railroad

**SECTOR:**  
Transport

**SUBSECTOR:**  
Railways

**STAGE ANALYZED:**  
Operation

**YEAR OF UPDATE:**  
2023

[Guide to read this datasheet](#) 

**Project's sustainability summary:** The project seeks to connect the states of Puebla, Oaxaca, Veracruz, Tlaxcala, Hidalgo, the State of Mexico and Mexico City, in addition to providing connectivity between the seaports of the Gulf of Mexico with the Pacific Ocean.



**ECONOMIC AND FINANCIAL SUSTAINABILITY**

EXAMPLE OF GOOD PRACTICES

Sustainability criteria	NA	T1	T2	T3
Economic and social returns	█			
Creation of employment opportunities and boost local productivity		█		
Financial sustainability of assets	█			
Detailed risk analysis		█	█	
Cash flow transparency and creditworthiness	█			
Infrastructure asset maintenance and optimal use		█		
Sustainability incentives	█			



**ENVIRONMENTAL SUSTAINABILITY AND CLIMATE RESILIENCE**

EXAMPLE OF GOOD PRACTICES

Sustainability criteria	NA	T1	T2	T3
Greenhouse gas emissions		█		
Climate risks, resilience and disaster risk management	█			
Impacts on biodiversity and native flora and fauna in the region	█			
Environmental impact of the Project	█			
Control and monitoring of pollutants	█			
Efficient use of resources and recycling strategies	█			
Efficient use of energy and renewable sources		█		
Preservation or enhancement of public spaces	█			



**SOCIAL SUSTAINABILITY**

EXAMPLE OF GOOD PRACTICES

Sustainability criteria	NA	T1	T2	T3
Reduction of poverty and access to basic services	█			
Integration of communities and other interested parties	█			
Integration of people with disabilities or special needs	█			
Effects of the project in the security of the region and in the health of workers and nearby communities		█	█	
Compliance with human and labor rights		█		
Cultural heritage and indigenous people	█			
Gender inclusion and women's economic empowerment through the project	█			
Equal distribution of benefits and compensations to communities		█		



**INSTITUTIONAL SUSTAINABILITY**

EXAMPLE OF GOOD PRACTICES

Sustainability criteria	NA	T1	T2	T3
Alignment with national and international strategies		█		
Sectoral and institutional integration		█		
Corporate sustainability, management and governance	█			
Transparency and anti-corruption protocols		█		
Legal requirements and compliance with social and environmental policies		█		
Development of more sustainable technologies and capacities	█			
Knowledge transfer in matters related to sustainability	█			
Pre-existing conditions and their monitoring	█			

**Source of this project:** SICT Agreement / Concession title / Modification to the Concession Title / Ferromex website / Grupo México Website / Proyectos México / GMXT Annual Report 2021 / Corporate Restructuring / Code of ethics / Code of Best Corporate Practices / Annual Report 2021 / Self-assessment of the Sustainability Maturity level 2018 / Sustainability Report 2019



### Comparison of this project vs other projects of the same subsector

(Number of projects included: 10)



Methodological framework defined by the Inter-American Development Bank (IDB)

[View](#)



**PROJECT:** 0272 Southeastern Railroad

**SECTOR:**  
Transport

**SUBSECTOR:**  
Railways

**STAGE ANALYZED:**  
Operation

**YEAR OF UPDATE:**  
2023

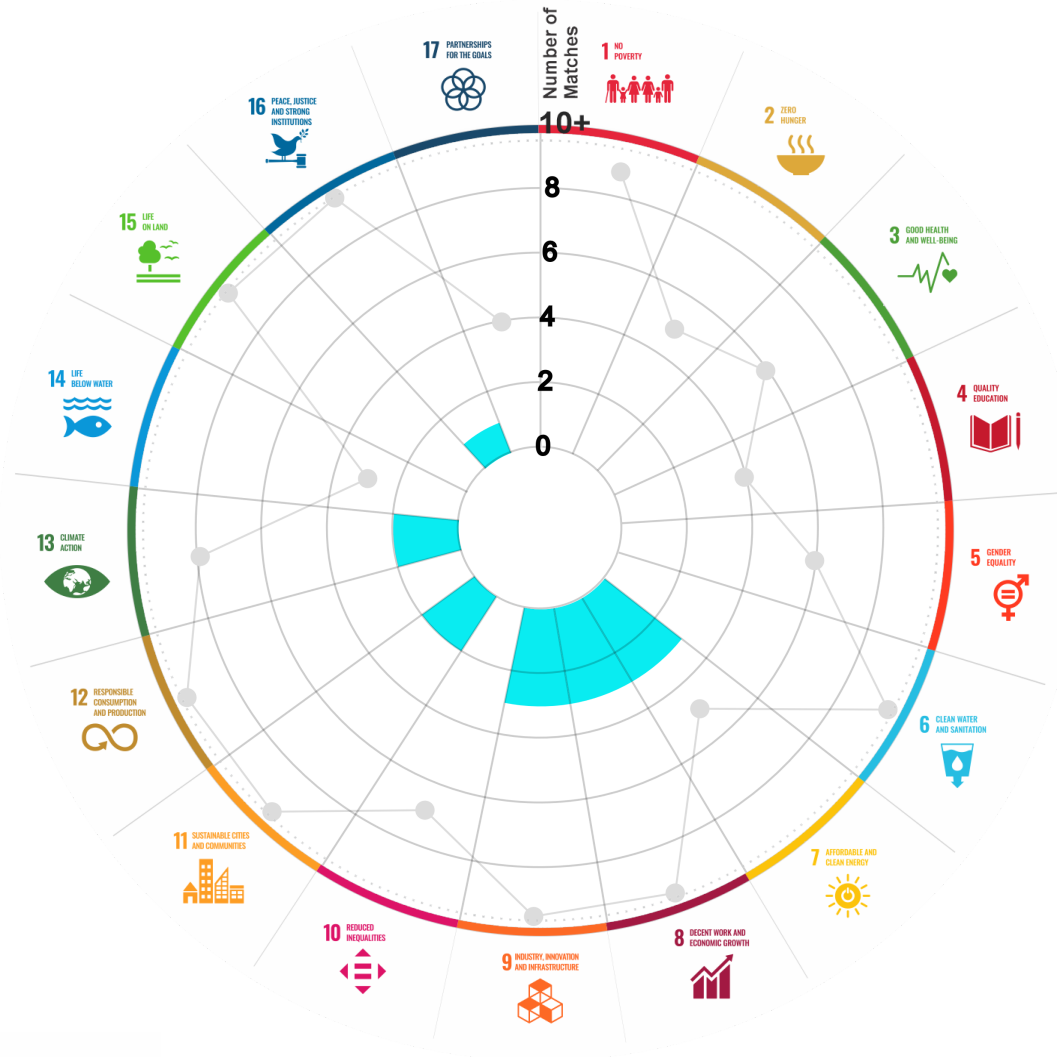
This section aims to present the potential alignment of the infrastructure project with the 17 Sustainable Development Goals (SDGs) of the 2030 Agenda. The relevance of this exercise resides in that it provides information to the actors of the infrastructure ecosystem for decision-making in investment that considers and promotes sustainable development.

Reading guide [View](#)

## 1. ALIGNMENT BY SUBSECTOR



## 2. ALIGNMENT BY SDG



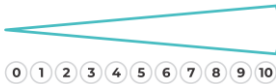
## 3. ALIGNMENT BY CRITERIA AND TARGETS

[View](#)



Explanation of the alignment of the sustainability criteria and the SDGs.

[View](#)



The tonality of the bars represents the level of detail of the information available from the IDB criteria and its potential alignment for each SDG, based on the scale: N.A., TIER 1, TIER 2 or TIER 3.

Number of times the project information coincides with the alignment of the IDB criteria and the SDGs.

Approximate reference to the number of maximum alignments a project can have between the IDB criteria and the targets of the SDGs.

# PROJECT

MODERNIZATION, OPERATION, MAINTENANCE, CONSERVATION AND EXPLOITATION OF THE SOUTHEASTERN FREIGHT GENERAL RAILWAY LINE.

SECTOR: TRANSPORT  
SUBSECTOR: RAILWAYS

Type of Investment: Brownfield

Short Name of the Project: 0272 Southeastern Railroad

Contract Currency:  
Mexican Pesos MXN

Estimated Investment MXN  
N.A.

Estimated Investment USD  
N.A.

Exchange rate (USD/MXN) used by the Ministry of Finance for the economic plan 2023 \$ 20.6

## DESCRIPTION

Concession to operate, rehabilitate, maintain, and exploit the general communication railway line that corresponds to the Southeastern trunk line was granted to Ferrocarril del Sureste, S.A. de C.V., which includes the short route Coatzacoalcos-Merida, as well as its operation and exploitation. The general communication railway line includes the railway, right-of-way, traffic control centers and railway operation signals.

The term of the concession is 50 years, starting on the date of completion of the delivery - reception due diligence of the railroad track and the assets, or as of February 17th, 1999, whichever occurs first.

Contract Scope: Modernization, Operation, Maintenance, Conservation, Exploitation

Type of Project: Public / Private

Selection Process: \_\_\_\_\_

Term: 50 years

Type of Contract: Concession

Payment Source: Project revenues / Rate

Asset (s): Freight Train 1,431.76 KM

## GEOLOCATION



## SPONSOR

### Entity

Secretaría de Infraestructura, Comunicaciones y Transportes

### Department

Dirección General de Desarrollo Ferroviario y Multimodal

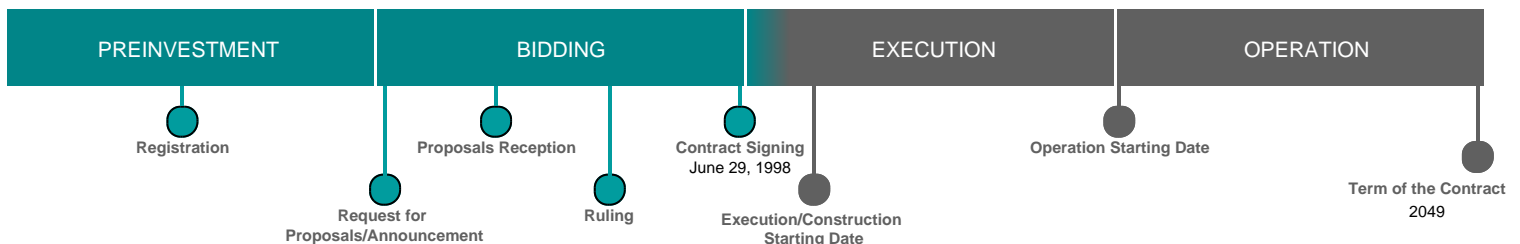
### Contact

Ing. Jorge Luis Hernández Luna

### E-mail

jorge.hernandezl@sct.gob.mx

## TIMELINE



Email: [proyectosmexico@banobras.gob.mx](mailto:proyectosmexico@banobras.gob.mx)



**SHCP**  
SECRETARÍA DE HACIENDA  
Y CRÉDITO PÚBLICO

**BANOBRAS**  
BANCO NACIONAL DE OBRAS  
Y SERVICIOS PÚBLICOS S.N.C.