

PROJECT: 0123 Aguascaliente Southwest Highway

SECTOR:
Transport

SUBSECTOR:
Highways / bridges

STAGE ANALYZED:
Operation

YEAR OF UPDATE:
2023

[Guide to read this datasheet](#) 

Project's sustainability summary: The project's main objective is to avoid access to heavy vehicles and free up traffic in the metropolitan area of Aguascalientes, which would positively impact the air quality of the urban sprawl and the health of its inhabitants.



ECONOMIC AND FINANCIAL SUSTAINABILITY

EXAMPLE OF GOOD PRACTICES

| Sustainability criteria | NA | T1 | T2 | T3 |
|---|----|----|----|----|
| Economic and social returns | | █ | | |
| Creation of employment opportunities and boost local productivity | | █ | | |
| Financial sustainability of assets | | | █ | |
| Detailed risk analysis | | █ | | |
| Cash flow transparency and creditworthiness | | █ | | |
| Infrastructure asset maintenance and optimal use | | █ | █ | |
| Sustainability incentives | █ | | | |



ENVIRONMENTAL SUSTAINABILITY AND CLIMATE RESILIENCE

EXAMPLE OF GOOD PRACTICES

| Sustainability criteria | NA | T1 | T2 | T3 |
|--|----|----|----|----|
| Greenhouse gas emissions | | █ | | |
| Climate risks, resilience and disaster risk management | █ | | | |
| Impacts on biodiversity and native flora and fauna in the region | | █ | | |
| Environmental impact of the Project | | █ | █ | |
| Control and monitoring of pollutants | | █ | | |
| Efficient use of resources and recycling strategies | █ | | | |
| Efficient use of energy and renewable sources | █ | | | |
| Preservation or enhancement of public spaces | █ | | | |



SOCIAL SUSTAINABILITY

EXAMPLE OF GOOD PRACTICES

| Sustainability criteria | NA | T1 | T2 | T3 |
|--|----|----|----|----|
| Reduction of poverty and access to basic services | █ | | | |
| Integration of communities and other interested parties | █ | | | |
| Integration of people with disabilities or special needs | █ | | | |
| Effects of the project in the security of the region and in the health of workers and nearby communities | | █ | █ | |
| Compliance with human and labor rights | █ | | | |
| Cultural heritage and indigenous people | | █ | | |
| Gender inclusion and women's economic empowerment through the project | █ | | | |
| Equal distribution of benefits and compensations to communities | █ | | | |



INSTITUTIONAL SUSTAINABILITY

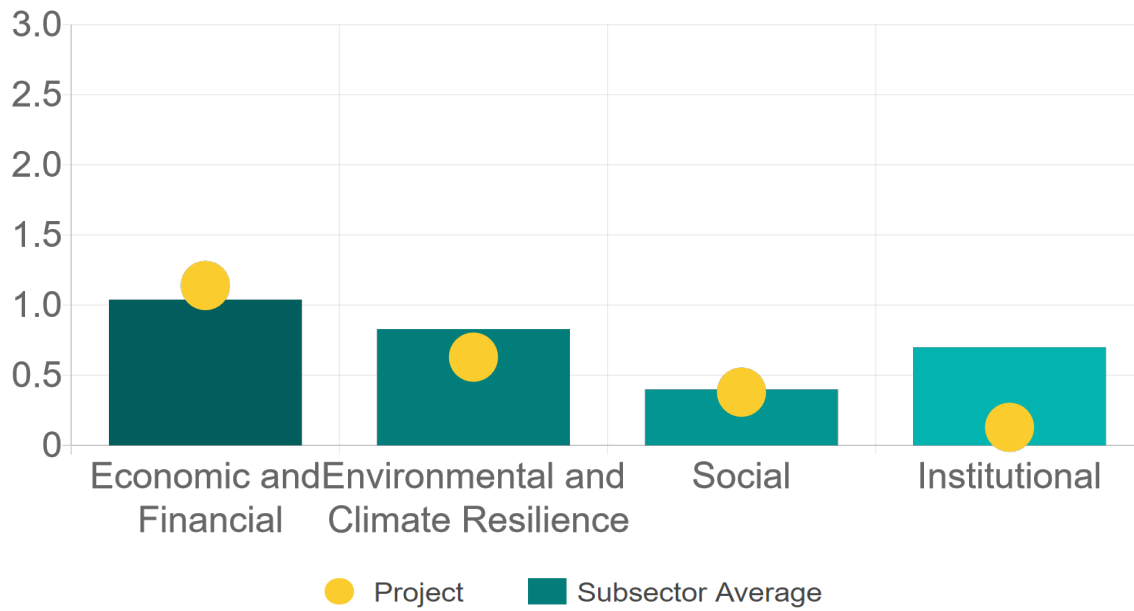
EXAMPLE OF GOOD PRACTICES

| Sustainability criteria | NA | T1 | T2 | T3 |
|--|----|----|----|----|
| Alignment with national and international strategies | | █ | | |
| Sectoral and institutional integration | █ | | | |
| Corporate sustainability, management and governance | █ | | | |
| Transparency and anti-corruption protocols | █ | | | |
| Legal requirements and compliance with social and environmental policies | █ | | | |
| Development of more sustainable technologies and capacities | █ | | | |
| Knowledge transfer in matters related to sustainability | █ | | | |
| Pre-existing conditions and their monitoring | █ | | | |

Source of this project: Concession Title / First Amendment to the Concession Title / Road Data / Self-Assessment of the Maturity Level in Sustainability 2021 / Western Highway Bypass Strategic Project / Questionnaire on Principles and Best Practices of Corporate Governance / MSE Annual Report 2020 / PINFRA Sustainability Strategy / Board of Directors / Risk Management / Audit Committee / Financial Statement PINFRA 2021 / [Show more...](#)

Comparison of this project vs other projects of the same subsector

(Number of projects included: 62)



Methodological framework defined by the Inter-American Development Bank (IDB)

[View](#)



PROJECT: 0123 Aguascaliente Southwest Highway

SECTOR:
Transport

SUBSECTOR:
Highways / bridges

STAGE ANALYZED:
Operation

YEAR OF UPDATE:
2023

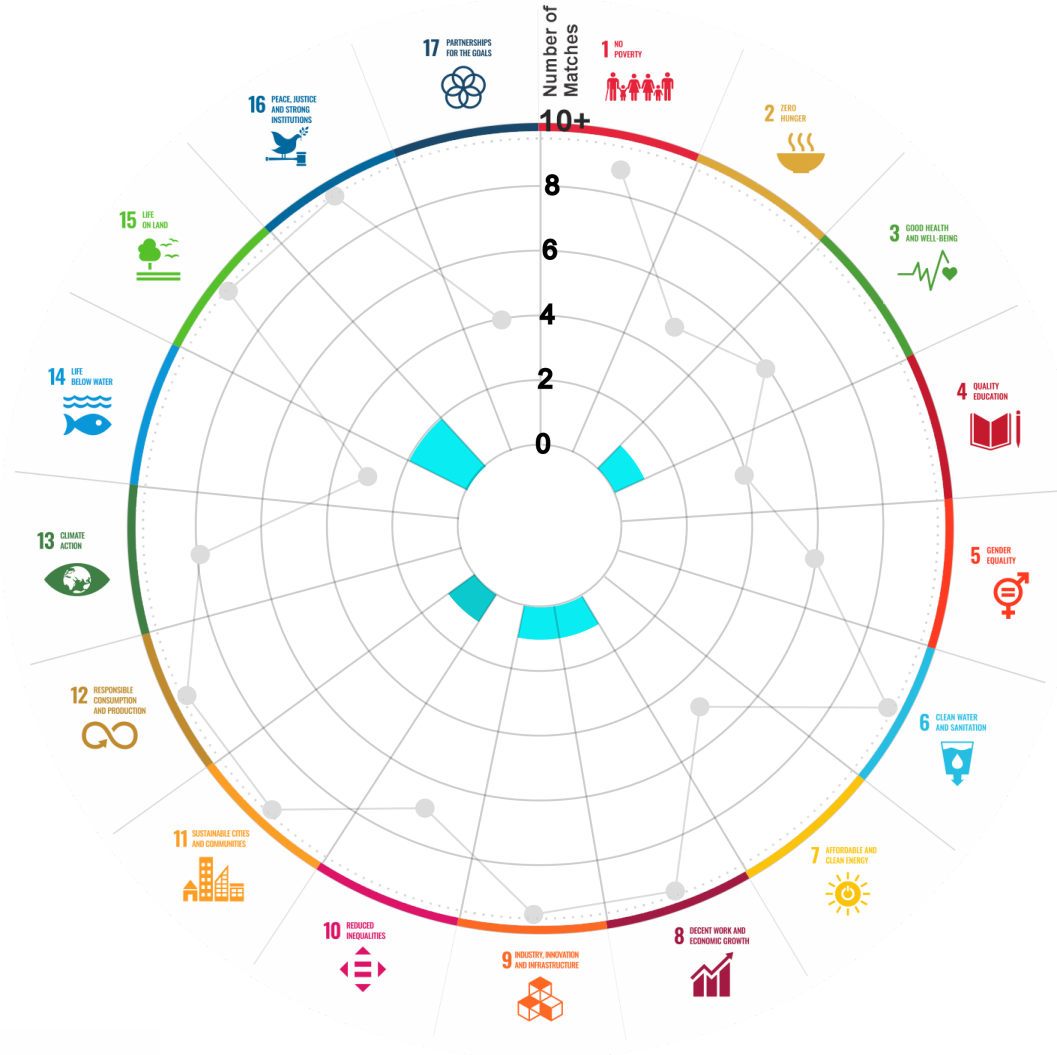
This section aims to present the potential alignment of the infrastructure project with the 17 Sustainable Development Goals (SDGs) of the 2030 Agenda. The relevance of this exercise resides in that it provides information to the actors of the infrastructure ecosystem for decision-making in investment that considers and promotes sustainable development.

Reading guide [View](#)

1. ALIGNMENT BY SUBSECTOR



2. ALIGNMENT BY SDG

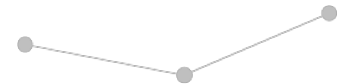
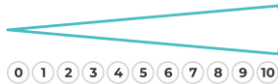


3. ALIGNMENT BY CRITERIA AND TARGETS

[View](#)

Explanation of the alignment of the sustainability criteria and the SDGs.

[View](#)



The tonality of the bars represents the level of detail of the information available from the IDB criteria and its potential alignment for each SDG, based on the scale: N.A., TIER 1, TIER 2 or TIER 3.

Number of times the project information coincides with the alignment of the IDB criteria and the SDGs.

Approximate reference to the number of maximum alignments a project can have between the IDB criteria and the targets of the SDGs.

P R O J E C T

EXTENSION, MODERNIZATION, OPERATION, MAINTENANCE, CONSERVATION AND EXPLOITATION OF THE SOUTHWEST AGUASCALIENTES BYPASS, IN THE STATE OF AGUASCALIENTES.

SECTOR: TRANSPORT
SUBSECTOR: HIGHWAYS / BRIDGES

Type of Investment: Brownfield

Short Name of the Project: 0123 Aguascaliente Southwest Highway

Contract Currency:
Mexican Pesos MXN

Estimated Investment MXN
N.A.

Estimated Investment USD
N.A.

Exchange rate (USD/MXN) used by the Ministry of Finance for the economic plan 2023 \$ 20.6

DESCRIPTION

ORIGINAL CONCESSION (Mar. 25, 2009). Concession to build, rehabilitate, expand, operate, exploit, conserve and maintain the the 21 km long southwest Aguascalientes bypass. The bypass is located between the federal highway 45 (Leon-Aguascalientes) and the federal highway 70 (Aguascalientes-Jalpa) in Aguascalientes. The concession includes the right-of-way, works, constructions and other goods and accessories. The first stage of the construction consists of the rehabilitation, the second stage consists of building a second toll highway parallel to the first one or the extension of the first one in order to accommodate 4 traffic lanes, two for each direction.

FIRST MODIFICATION (Aug. 29, 2016). Modification to the eighth condition, related to construction (type of concrete to be used).

Contract Scope: Extension, Modernization, Operation, Maintenance, Conservation, Exploitation

Type of Project: Public

Selection Process: _____

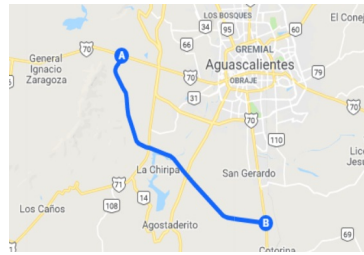
Term: 30 years

Type of Contract: Concession

Payment Source: Project revenues / Rate

Asset (s): Highway 21 KM

GEOLOCATION



SPONSOR

Entity

Secretaría de Infraestructura, Comunicaciones y Transportes

Department

Dirección General de Desarrollo Carretero

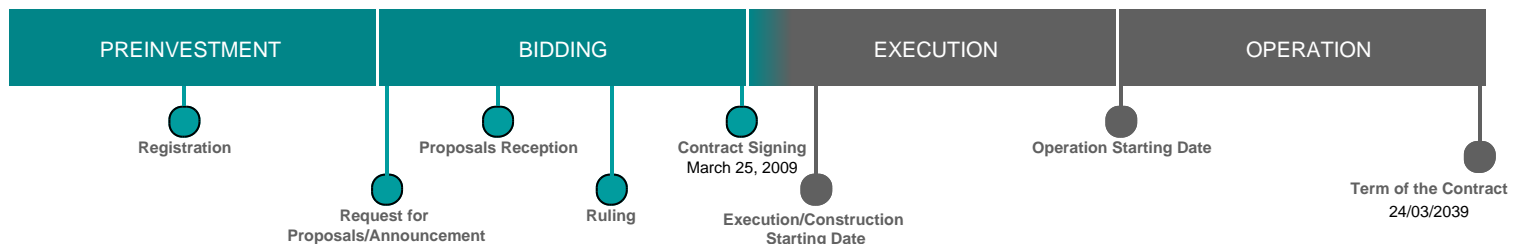
Contact

Fernando Palma Soto / Director General Adjunto de Seguimiento de Concesiones de Autopistas

E-mail

fpalmaso@sct.gob.mx

TIMELINE



Email: proyectosmexico@banobras.gob.mx



SHCP

SECRETARÍA DE HACIENDA
Y CRÉDITO PÚBLICO

BANOBRAS

BANCO NACIONAL DE OBRAS
Y SERVICIOS PÚBLICOS S.N.C.