

**PROJECT:** 0109 Zaragoza-Ysleta, Lerdo-Stanton, Paso del Norte and Guadalupe-Tornillo International Bridges

**SECTOR:**  
Transport

**SUBSECTOR:**  
Highways / bridges

**STAGE ANALYZED:**  
Operation

**YEAR OF UPDATE:**  
2022

[Guide to read this datasheet](#)



**Project's sustainability summary:** The project seeks to reduce service times for private transport and cargo, provide certainty in crossing times, encourage an environment conducive to investment in infrastructure, promote international trade in merchandise and specialized manufacturing while reducing the consumption of fuels, the emission of pollutants into the atmosphere and accidents in the area.



**ECONOMIC AND FINANCIAL  
SUSTAINABILITY**

EXAMPLE OF GOOD PRACTICES

**Sustainability criteria**

	NA	T1	T2	T3
Economic and social returns				
Creation of employment opportunities and boost local productivity				
Financial sustainability of assets				
Detailed risk analysis				
Cash flow transparency and creditworthiness				
Infrastructure asset maintenance and optimal use				
Sustainability incentives				



**ENVIRONMENTAL  
SUSTAINABILITY AND  
CLIMATE RESILIENCE**

EXAMPLE OF GOOD PRACTICES

**Sustainability criteria**

	NA	T1	T2	T3
Greenhouse gas emissions				
Climate risks, resilience and disaster risk management				
Impacts on biodiversity and native flora and fauna in the region				
Environmental impact of the Project				
Control and monitoring of pollutants				
Efficient use of resources and recycling strategies				
Efficient use of energy and renewable sources				
Preservation or enhancement of public spaces				



**SOCIAL SUSTAINABILITY**

EXAMPLE OF GOOD PRACTICES

**Sustainability criteria**

	NA	T1	T2	T3
Reduction of poverty and access to basic services				
Integration of communities and other interested parties				
Integration of people with disabilities or special needs				
Effects of the project in the security of the region and in the health of workers and nearby communities				
Compliance with human and labor rights				
Cultural heritage and indigenous people				
Gender inclusion and women's economic empowerment through the project				
Equal distribution of benefits and compensations to communities				



**INSTITUTIONAL  
SUSTAINABILITY**

EXAMPLE OF GOOD PRACTICES

**Sustainability criteria**

	NA	T1	T2	T3
Alignment with national and international strategies				
Sectoral and institutional integration				
Corporate sustainability, management and governance				
Transparency and anti-corruption protocols				
Legal requirements and compliance with social and environmental policies				
Development of more sustainable technologies and capacities				
Knowledge transfer in matters related to sustainability				
Pre-existing conditions and their monitoring				

**Source of this project:** National Infrastructure Fund / Concession Title / Summary of EIM 08CI2011V0008 / EIM 08CI2011V0008 / Resolution of the EIM 08CI2011V0008 / EIM 19NL2009V0006 / Resolution of the EIM 19NL2009V0006

SECTOR:  
Transport

SUBSECTOR:  
Highways / bridges

STAGE ANALYZED:  
Operation

YEAR OF UPDATE:  
2022

Comparison of this project vs other projects of the same subsector

(Number of projects included: 63)



Methodological framework  
defined by the Inter-  
American Development  
Bank (IDB)

View



**HACIENDA**  
SECRETARÍA DE HACIENDA Y CRÉDITO PÚBLICO

**BANBRAS**  
BANCO NACIONAL DE OBRAS Y SERVICIOS PÚBLICOS S.N.C.

**IDB**  
Inter-American  
Development Bank

**cooperación  
alemana**  
DEUTSCHE ZUSAMMENARBEIT

**giz** Deutsche Gesellschaft  
für Internationale  
Zusammenarbeit (GIZ) GmbH

**PROJECT:** 0109 Zaragoza-Ysleta, Lerdo-Stanton, Paso del Norte and Guadalupe-Tornillo International Bridges

**SECTOR:**  
Transport

**SUBSECTOR:**  
Highways / bridges

**STAGE ANALYZED:**  
Operation

**YEAR OF UPDATE:**  
2022

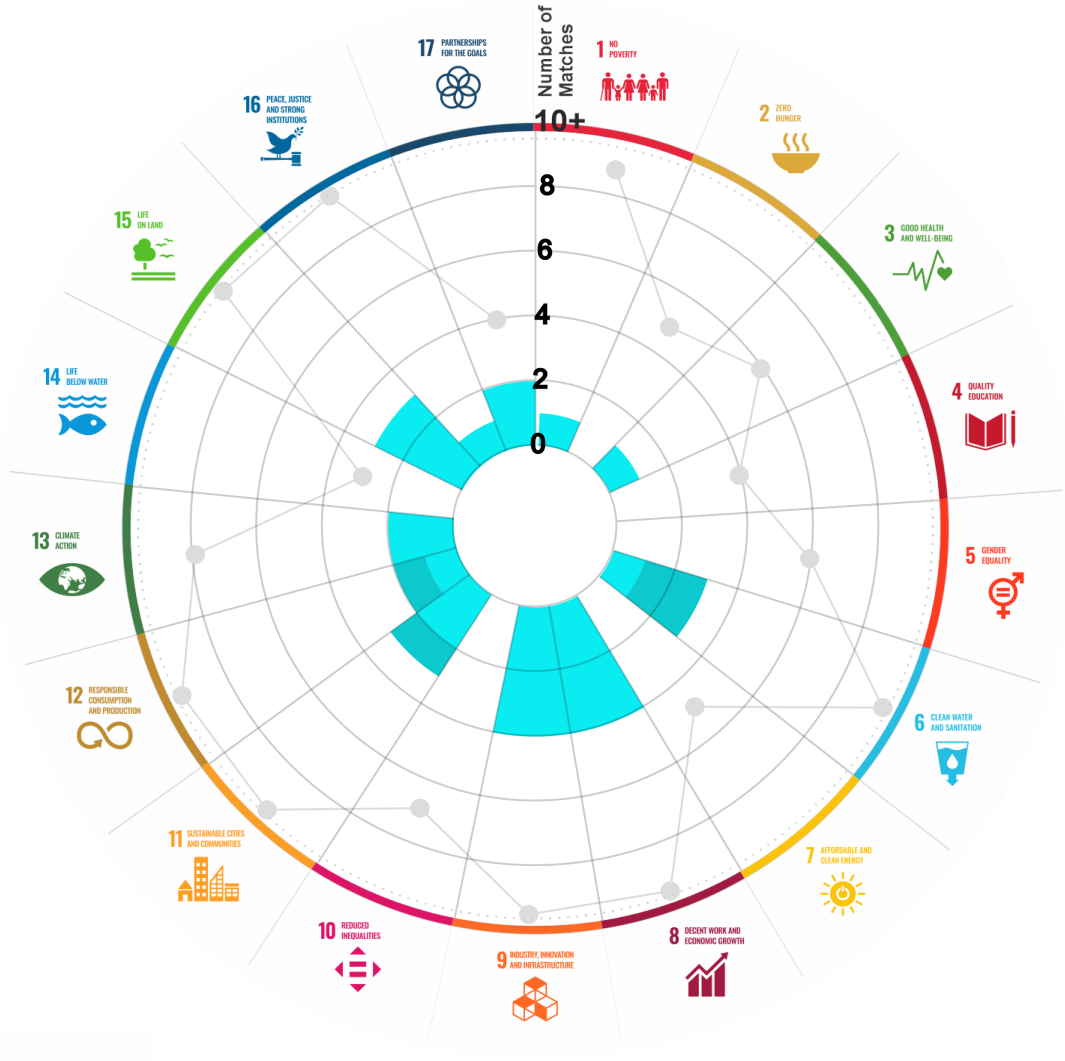
This section aims to present the potential alignment of the infrastructure project with the 17 Sustainable Development Goals (SDGs) of the 2030 Agenda. The relevance of this exercise resides in that it provides information to the actors of the infrastructure ecosystem for decision-making in investment that considers and promotes sustainable development.

Reading guide [View](#)

## 1. ALIGNMENT BY SUBSECTOR



## 2. ALIGNMENT BY SDG



## 3. ALIGNMENT BY CRITERIA AND TARGETS

[View](#)



Explanation of the alignment of the sustainability criteria and the SDGs.

[View](#)



The tonality of the bars represents the level of detail of the information available from the IDB criteria and its potential alignment for each SDG, based on the scale: N.A., TIER 1, TIER 2 or TIER 3.



Number of times the project information coincides with the alignment of the IDB criteria and the SDGs.




Approximate reference to the number of maximum alignments a project can have between the IDB criteria and the targets of the SDGs.

## PROJECT

CONSTRUCTION, OPERATION, MAINTENANCE, CONSERVATION AND EXPLOITATION OF THE BORDER BRIDGES ZARAGOZA-YSLETA, LERDO-STANTON, PASO DEL NORTE AND GUADALUPE TORNILLO, IN THE STATE OF CHIHUAHUA.

**SECTOR:** TRANSPORT  
**SUBSECTOR:** HIGHWAYS / BRIDGES

**Type of Investment:** Brownfield

 Banobras/Fonadin involvement

**Short Name of the Project:** 0109 Zaragoza-Ysleta, Lerdo-Stanton, Paso del Norte and Guadalupe-Tornillo International Bridges

**Contract Currency:**  
Mexican Pesos MXN

**Estimated Investment MXN**  
N.A.

**Estimated Investment USD**  
N.A.

Exchange rate (USD/MXN) used by the Ministry of Finance for the economic plan 2023 \$ 20.6

### DESCRIPTION

ORIGINAL CONCESSION (Dec. 30, 2015). Construct, operate, exploit, conserve and maintain the Zaragoza-Ysleta, Lerdo-Stanton, Paso del Norte and Guadalupe Tornillo international bridges. The concession includes the right-of-way and ancillary services. The term of the concession is 30 years.

(\*) Project with Banobras and/or National Infrastructure Fund (Fonadin) involvement or support.

**Contract Scope:** Construction, Operation, Maintenance, Conservation, Exploitation

**Type of Project:** Public

**Selection Process:**

**Term:** 30 years

**Type of Contract:** Concession

**Payment Source:** Project revenues / Rate

**Asset (s):** Bridge

### GEOLOCATION



### SPONSOR

#### Entity

Secretaría de Infraestructura, Comunicaciones y Transportes

#### Department

Dirección General de Desarrollo Carretero

#### Contact

Fernando Palma Soto / Director General Adjunto de Seguimiento de Concesiones de Autopistas

#### E-mail

fpalmaso@sct.gob.mx

### TIMELINE



Email: [proyectosmexico@banobras.gob.mx](mailto:proyectosmexico@banobras.gob.mx)



**SHCP**

SECRETARÍA DE HACIENDA  
Y CRÉDITO PÚBLICO

**BANOBRAS**

BANCO NACIONAL DE OBRAS  
Y SERVICIOS PÚBLICOS S.N.C.