

**PROJECT:** 0913 "Atlacomulco-Polotitlán" Highway

**SECTOR:**  
Transport

**SUBSECTOR:**  
Highways / bridges

**STAGE ANALYZED:**  
Bidding

**YEAR OF UPDATE:**  
2022

[Guide to read this datasheet](#) 

**Project's sustainability summary:** The project aims to construct, operate, conserve, maintain and exploit the 82.80 kilometers Atlacomulco-Polotitlán highway, interconnecting municipalities in the northern zone of the State of Mexico in order to improve the quality of life of its inhabitants and as an alternative connection with neighboring states.

 **ECONOMIC AND FINANCIAL SUSTAINABILITY**

**EXAMPLE OF GOOD PRACTICES**  
Detailed sheets are included for the indicators of the operation, conservation and maintenance program.

Sustainability criteria	NA	T1	T2	T3
Economic and social returns		█		
Creation of employment opportunities and boost local productivity		█		
Financial sustainability of assets		█	█	
Value for money principle	█			
Detailed risk analysis		█	█	
Cash flow transparency and creditworthiness		█		
Infrastructure asset maintenance and optimal use		█	█	█
Sustainability incentives	█			

 **ENVIRONMENTAL SUSTAINABILITY AND CLIMATE RESILIENCE**

**EXAMPLE OF GOOD PRACTICES**

Sustainability criteria	NA	T1	T2	T3
Greenhouse gas emissions	█			
Climate risks, resilience and disaster risk management		█		
Impacts on biodiversity and native flora and fauna in the region		█		
Environmental Impact of the Project		█		
Control and monitoring of pollutants	█			
Efficient use of resources and recycling strategies	█			
Efficient use of energy and renewable sources	█			
Preservation or enhancement of public spaces	█			

 **SOCIAL SUSTAINABILITY**

**EXAMPLE OF GOOD PRACTICES**

Sustainability criteria	NA	T1	T2	T3
Reduction of poverty and access to basic services		█		
Integration of communities and other interested parties	█			
Integration of people with disabilities or special needs		█		
Effects of the project in the security of the region and in the health of workers and nearby communities	█			
Compliance with human and labor rights	█			
Cultural heritage and indigenous people		█		
Gender inclusion and women's economic empowerment through the project	█			
Equal distribution of benefits and compensations to communities	█			

 **INSTITUTIONAL SUSTAINABILITY**

**EXAMPLE OF GOOD PRACTICES**

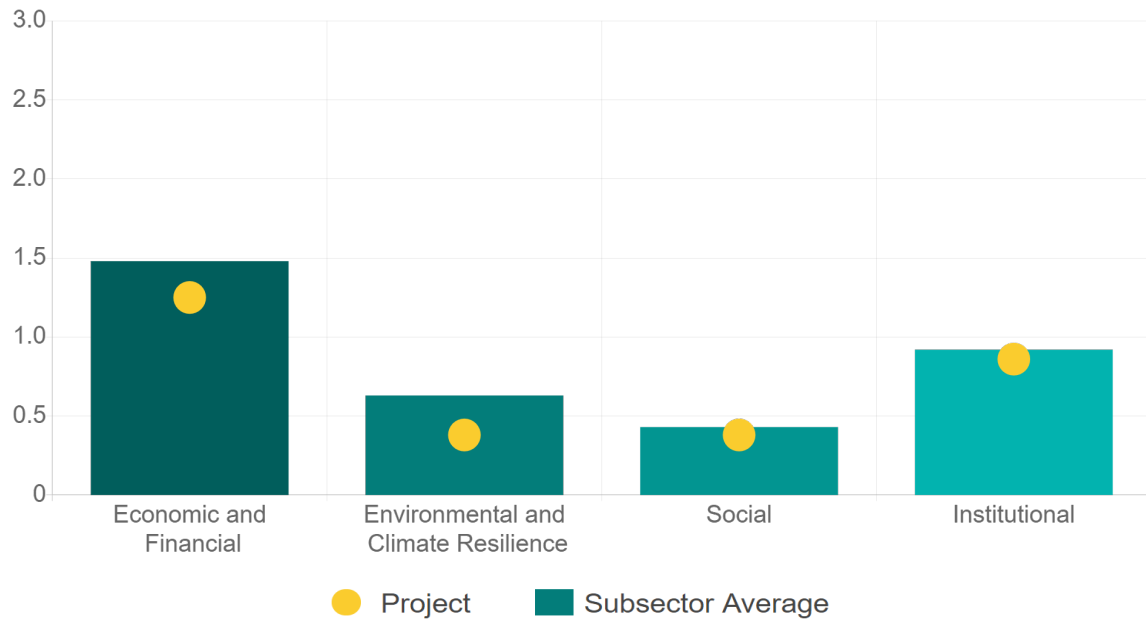
Sustainability criteria	NA	T1	T2	T3
Alignment with national and international strategies		█		
Sectoral and institutional integration		█		
Transparency of the process		█	█	
Corruption and mitigation process	█			
Legal requirements and compliance with social and environmental policies		█	█	
Training development in aspects related to sustainability	█			
Pre-existing conditions and their monitoring	█			

**Source of this project:** Announcement / Competition rules / Minutes of the second ordinary session / Appendix II Informative Profile / Appendix III Concession Title Model / Appendix VI Evaluation Criteria / Annex 14 Supervision of the construction and operation of the highway / Annex 16 Qualification of the physical condition and the operation services of the highways / Annex 17 Procedure for Emergency Attention / Annex 19 Bases of tariff regulation / [Show more...](#)



### Comparison of this project vs other projects of the same subsector

(Number of projects included: 5)



Methodological framework defined by the Inter-American Development Bank (IDB)

View



**PROJECT:** 0913 "Atlacomulco-Polotitlán" Highway

**SECTOR:**  
Transport

**SUBSECTOR:**  
Highways / bridges

**STAGE ANALYZED:**  
Bidding

**YEAR OF UPDATE:**  
2022

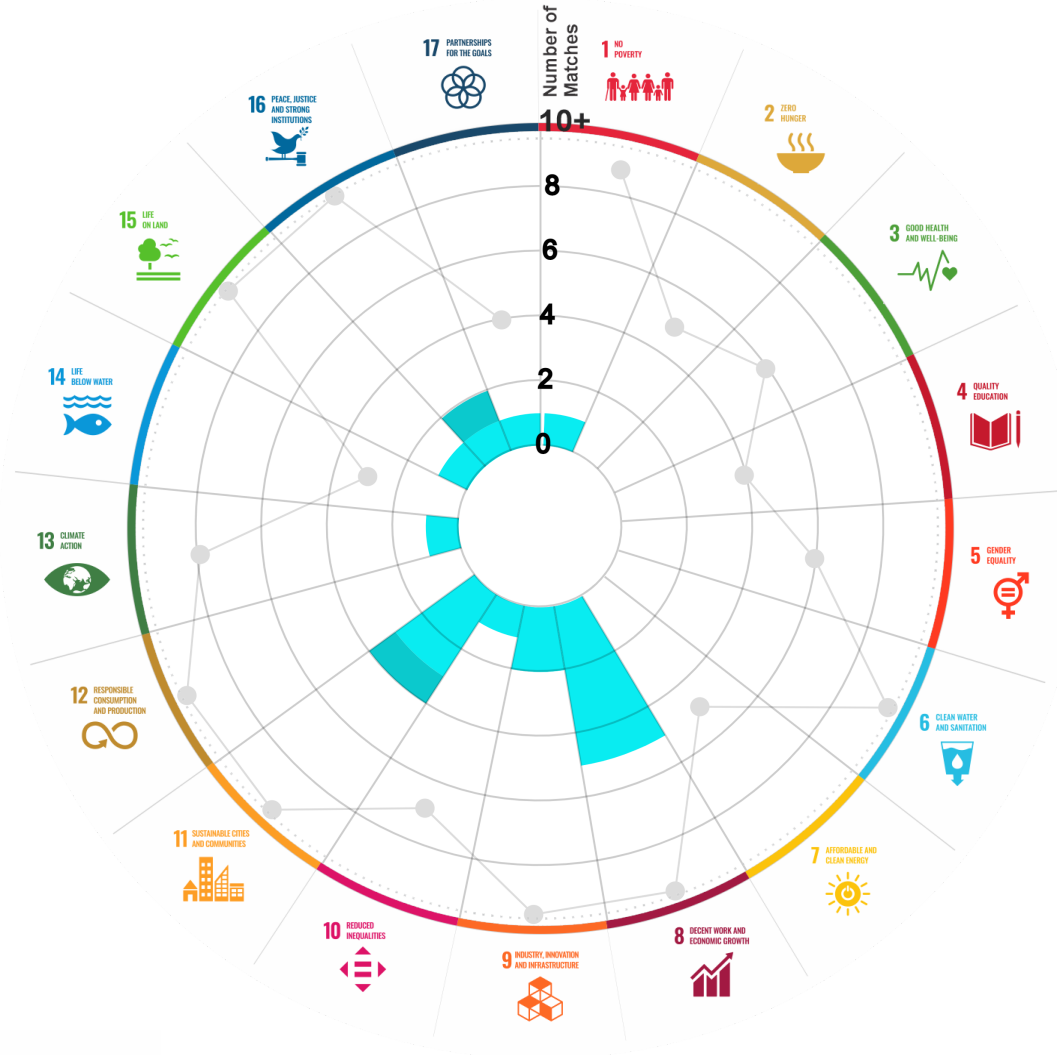
This section aims to present the potential alignment of the infrastructure project with the 17 Sustainable Development Goals (SDGs) of the 2030 Agenda. The relevance of this exercise resides in that it provides information to the actors of the infrastructure ecosystem for decision-making in investment that considers and promotes sustainable development.

Reading guide [View](#)

## 1. ALIGNMENT BY SUBSECTOR



## 2. ALIGNMENT BY SDG



**3. ALIGNMENT BY CRITERIA AND TARGETS**

[View](#)

Explanation of the alignment of the sustainability criteria and the SDGs.

[View](#)



The tonality of the bars represents the level of detail of the information available from the IDB criteria and its potential alignment for each SDG, based on the scale: N.A., TIER 1, TIER 2 or TIER 3.

Number of times the project information coincides with the alignment of the IDB criteria and the SDGs.

Approximate reference to the number of maximum alignments a project can have between the IDB criteria and the targets of the SDGs.

## P R O J E C T

DESIGN, CONSTRUCTION, OPERATION, MAINTENANCE, CONSERVATION AND EXPLOITATION OF THE "ATLACOMULCO-POLOTITLÁN" HIGHWAY, IN THE STATE OF MEXICO.

SECTOR: TRANSPORT  
SUBSECTOR: HIGHWAYS / BRIDGES

Type of Investment: Greenfield

Short Name of the Project: 0913 "Atzacmulco-Polotitlán" Highway

Contract Currency:  
Mexican Pesos MXN

Estimated Investment MXN  
N.A.

Estimated Investment USD  
N.A.

Exchange rate (USD/MXN) used by the Ministry of Finance for the economic plan 2023 \$ 20.6

### DESCRIPTION

The project consists of the design, construction, operation, conservation, maintenance and exploitation of the "Atzacmulco-Polotitlán" highway type A-4, with a crown width of 22 meters, it will have 4 traffic lanes of 3.5 meters wide, two in each direction, 3.0 meters wide exterior boundaries, 1.0 meters internal boundaries and separating barrier of senses.

It includes the construction of 4 uneven junctions and incorporates 1 railroad crossing, 11 bridges and 3 viaducts, beginning the line on the Toluca – Polotitlán federal highway starting in the town of San Francisco and ending in Polotitlán with a junction on the Mexico - Querétaro Highway, with a total length of 82.80 kilometers, with an impact on the municipalities of Atzacmulco, Acambay, Aculco, Ixtlahuaca, in the State of Mexico.

Contract Scope: Design, Construction, Operation, Maintenance, Conservation, Exploitation

Type of Project: Public / Private

Selection Process: International Open Tender

Term: 30 years

Type of Contract: State Concession

Payment Source: Project revenues / Rate

Asset (s): Highway 82.80 KM-A4

### GEOLOCATION



### SPONSOR



#### Entity

Gobierno Estatal

#### Department

Secretaría de Movilidad  
Sistema de Autopistas, Aeropuertos, Servicios Conexos y Auxiliares del Estado de México.

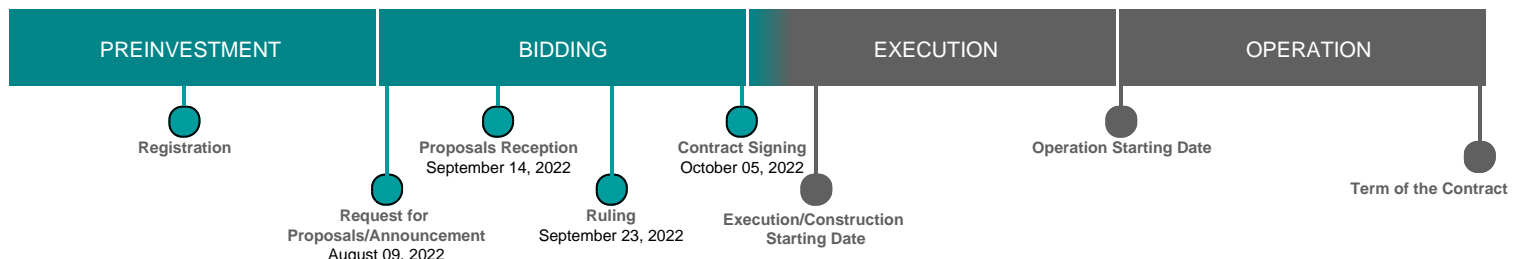
#### Contact

Jorge Iván Morales Pérez

#### E-mail

dirproy.saascaem@edomex.gob.mx

### TIMELINE



Email: [proyectosmexico@banobras.gob.mx](mailto:proyectosmexico@banobras.gob.mx)



**SHCP**  
SECRETARÍA DE HACIENDA  
Y CRÉDITO PÚBLICO

**BANOBRAS**  
BANCO NACIONAL DE OBRAS  
Y SERVICIOS PÚBLICOS S.N.C.