

PROJECT: 0902 Garcia-Monterrey International Airport Railway Corridor

SECTOR:
Transport

SUBSECTOR:
Railways

STAGE ANALYZED:
Preinvestment

YEAR OF UPDATE:
2021

[Guide to read this datasheet](#) 

Project's sustainability summary: The project aims to rehabilitate the existing railways between the municipality of García and the Monterrey International Airport in order to improve urban mobility in the Monterrey metropolitan area, as well as cargo traffic, through a mixed network scheme to respond to the massive transport of passengers and merchandise.

 **ECONOMIC AND FINANCIAL SUSTAINABILITY**

EXAMPLE OF GOOD PRACTICES
The project proposes carbon and transportation credits for its financing.

Sustainability criteria	NA	T1	T2	T3
Economic and social returns		█	█	
Creation of employment opportunities and boost local productivity		█		
Financial sustainability of assets		█		
Detailed risk analysis		█		
Cash flow transparency and creditworthiness	█			
Infrastructure asset maintenance and optimal use		█		
Sustainability incentives		█		

 **ENVIRONMENTAL SUSTAINABILITY AND CLIMATE RESILIENCE**

EXAMPLE OF GOOD PRACTICES

Sustainability criteria	NA	T1	T2	T3
Greenhouse gas emissions		█		
Climatic risks, resilience and disaster management	█			
Impacts on biodiversity and native flora and fauna in the region		█	█	
Environmental impact of the project		█	█	
Control and monitoring of pollutants		█		
Efficient use of resources and recycling strategies		█		
Efficient use of energy and renewable sources		█		
Preservation or enhancement of public spaces	█			

 **SOCIAL SUSTAINABILITY**

EXAMPLE OF GOOD PRACTICES

Sustainability criteria	NA	T1	T2	T3
Reduction of poverty and access to basic services	█			
Integration of communities and other interested parties	█			
Integration of people with disabilities or special needs	█			
Effects of the project in the security of the region and in the health of workers and nearby communities		█		
Compliance with human and labor rights	█			
Cultural heritage and indigenous people	█			
Gender inclusion and women's economic empowerment through the project	█			
Equal distribution of benefits and compensations to communities		█		

 **INSTITUTIONAL SUSTAINABILITY**

EXAMPLE OF GOOD PRACTICES

Sustainability criteria	NA	T1	T2	T3
Alignment with national and international strategies	█			
Sectoral and institutional integration		█		
Transparency and anti-corruption protocols		█		
Legal requirements and compliance with social and environmental policies	█			
Development of more sustainable technologies and capacities		█		
Pre-existing conditions and their monitoring	█			

Source of this project: Cost-Benefit Analysis / Economic Feasibility / Legal Feasibility / Technical Feasibility / Environmental Feasibility / Mobility and Transportation Study



Comparison of this project vs other projects of the same subsector

(Number of projects included: 1)



Methodological framework defined by the Inter-American Development Bank (IDB)

View



PROJECT: 0902 Garcia-Monterrey International Airport Railway Corridor

SECTOR:
Transport

SUBSECTOR:
Railways

STAGE ANALYZED:
Preinvestment

YEAR OF UPDATE:
2021

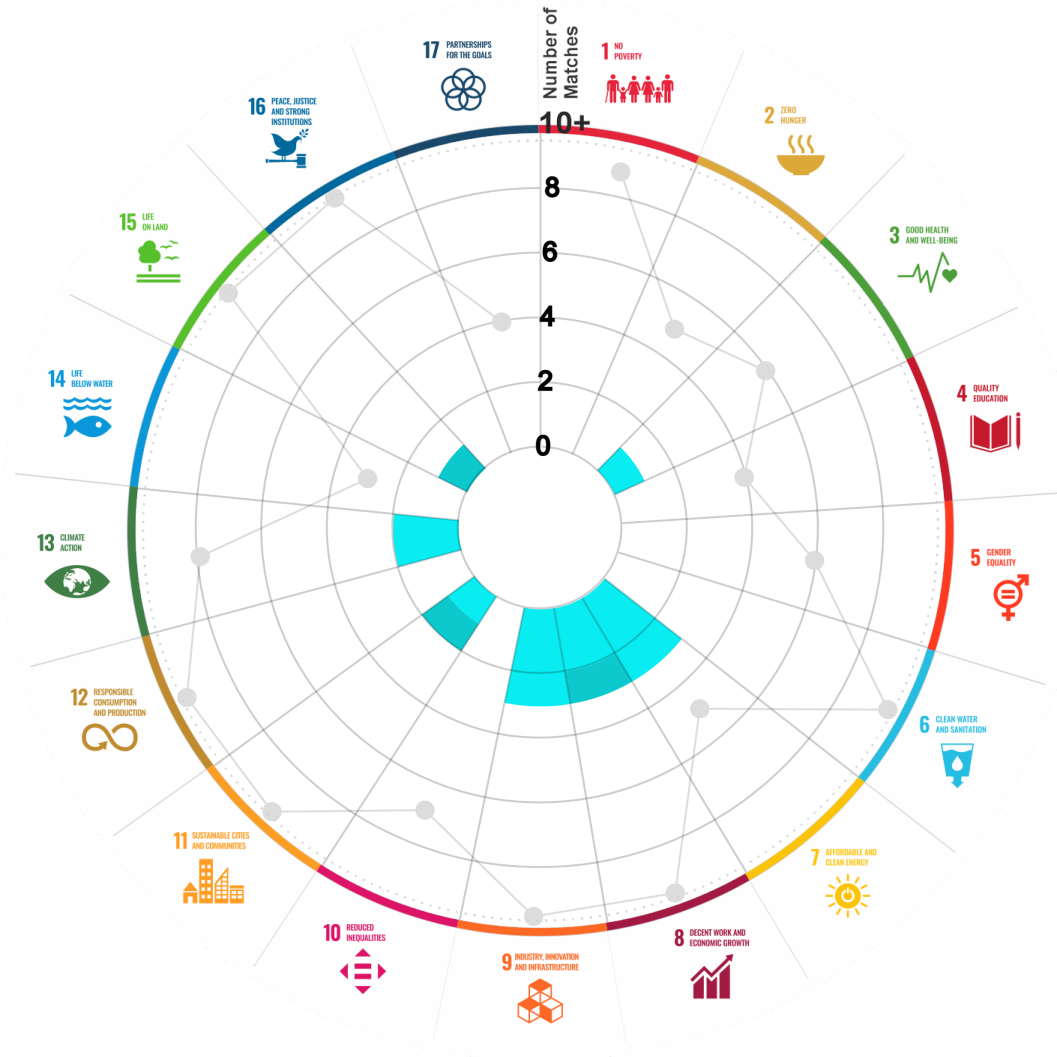
This section aims to present the potential alignment of the infrastructure project with the 17 Sustainable Development Goals (SDGs) of the 2030 Agenda. The relevance of this exercise resides in that it provides information to the actors of the infrastructure ecosystem for decision-making in investment that considers and promotes sustainable development.

Reading guide [View](#)

1. ALIGNMENT BY SUBSECTOR



2. ALIGNMENT BY SDG



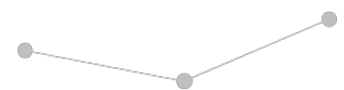
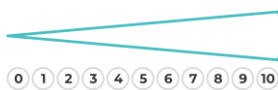
3. ALIGNMENT BY CRITERIA AND TARGETS

[View](#)



Explanation of the alignment of the sustainability criteria and the SDGs.

[View](#)



The tonality of the bars represents the level of detail of the information available from the IDB criteria and its potential alignment for each SDG, based on the scale: N.A., TIER 1, TIER 2 or TIER 3.

Number of times the project information coincides with the alignment of the IDB criteria and the SDGs.

Approximate reference to the number of maximum alignments a project can have between the IDB criteria and the targets of the SDGs.

P R O J E C T

DESIGN, CONSTRUCTION, OPERATION AND CONSERVATION OF THE GARCÍA-MONTERREY INTERNATIONAL AIRPORT RAILWAY CORRIDOR, IN THE STATE OF NUEVO LEON.

SECTOR: TRANSPORT
SUBSECTOR: RAILWAYS

Type of Investment: Greenfield

Short Name of the Project: 0902 Garcia-Monterrey International Airport Railway Corridor

Contract Currency:
Mexican Pesos MXN

Estimated Investment MXN
\$ 24,522,416,435

Estimated Investment USD
\$ 1,190,408,564

Exchange rate (USD/MXN) used by the Ministry of Finance for the economic plan 2023 \$ 20.6

DESCRIPTION

The project consists of building a comprehensive urban development project through the reorganization of the existing rail corridor in the Monterrey Metropolitan Area.

The route covers an approximate route of 62 kilometers crossing the municipalities of Apodaca, Monterrey, San Nicolás, San Pedro Garza García, Santa Catarina and García; in a confined corridor with mixed traffic (cargo / passengers). The project will take advantage of the existing infrastructure with the objective of offering a complete transportation service that will benefit approximately 164 thousand passengers per day and that can serve as a backbone for development and land management.

Contract Scope: Design, Construction, Operation, Conservation

Type of Project: Public / Private

Selection Process: International Open Tender

Term: 35 years

Type of Contract: Federal PPP

Payment Source:

Asset (s): Railroad

GEOLOCATION



SPONSOR



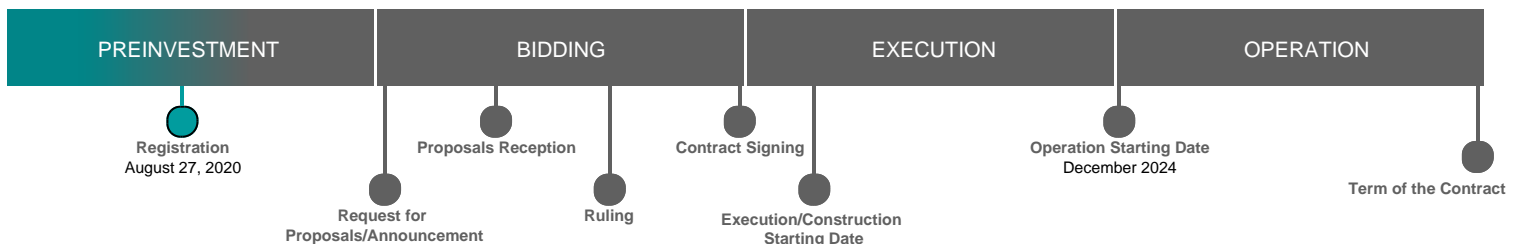
Entity

Secretaría de Infraestructura, Comunicaciones y Transportes

Department

Dirección General de Desarrollo Ferroviario y Multimodal

TIMELINE



Email: proyectosmexico@banobras.gob.mx



SHCP
SECRETARÍA DE HACIENDA
Y CRÉDITO PÚBLICO

BANOBRAS
BANCO NACIONAL DE OBRAS
Y SERVICIOS PÚBLICOS S.N.C.