



PROJECT: 0271 Northeastern Railroad

SECTOR:
Transport

SUBSECTOR:
Railways

STAGE ANALYZED:
Operation

YEAR OF UPDATE:
2020

[Guide to read this datasheet](#) 

Project's sustainability summary: The project consists of the modernization, operation and maintenance of the Northeast trunk road for cargo transportation, which contributes to the reduction of GHG emissions.

ECONOMIC AND FINANCIAL SUSTAINABILITY

EXAMPLE OF GOOD PRACTICES
Possible risks, including economic and financial, and their mitigation measures, are monitored and updated by the External Audit Area.

Sustainability criteria	NA	T1	T2	T3
Economic and social returns				
Creation of employment opportunities and boost local productivity				
Financial sustainability of assets				
Detailed risk analysis				
Cash flow transparency and creditworthiness				
Infrastructure asset maintenance and optimal use				
Sustainability incentives				

ENVIRONMENTAL SUSTAINABILITY AND CLIMATE RESILIENCE

EXAMPLE OF GOOD PRACTICES
The developer seeks to optimize its energy use and make it fuel consumption more efficient by applying the Precision Rail System.

Sustainability criteria	NA	T1	T2	T3
Greenhouse gas emissions				
Climate risks, resilience and disaster risk management				
Impacts on biodiversity and native flora and fauna in the region				
Environmental impact of the Project				
Control and monitoring of pollutants				
Efficient use of resources and recycling strategies				
Efficient use of energy and renewable sources				
Preservation or enhancement of public spaces				

SOCIAL SUSTAINABILITY

EXAMPLE OF GOOD PRACTICES
The project has advanced technology objectives and systems to ensure the safety and health of its workers, crew and surrounding communities.

Sustainability criteria	NA	T1	T2	T3
Reduction of poverty and access to basic services				
Integration of communities and other interested parties				
Integration of people with disabilities or special needs				
Effects of the project in the security of the region and in the health of workers and nearby communities				
Compliance with human and labor rights				
Cultural heritage and indigenous people				
Gender inclusion and women's economic empowerment through the project				
Equal distribution of benefits and compensations to communities				

INSTITUTIONAL SUSTAINABILITY

EXAMPLE OF GOOD PRACTICES
The project has a strategic social responsibility plan that includes an annual progress report open to the public.

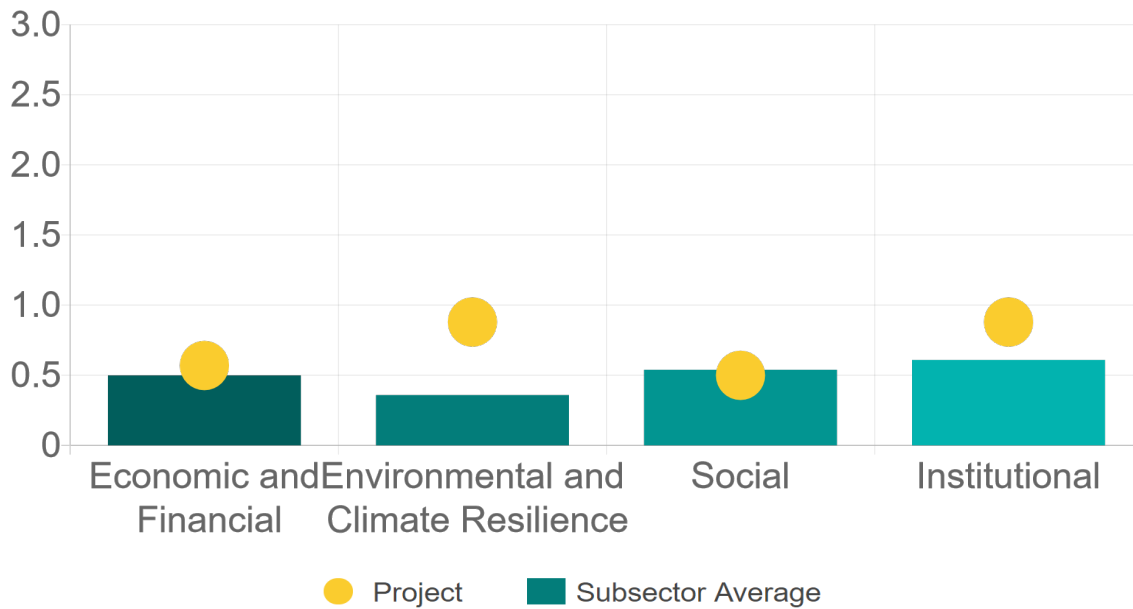
Sustainability criteria	NA	T1	T2	T3
Alignment with national and international strategies				
Sectoral and institutional integration				
Corporate sustainability, management and governance				
Transparency and anti-corruption protocols				
Legal requirements and compliance with social and environmental policies				
Development of more sustainable technologies and capacities				
Knowledge transfer in matters related to sustainability				
Pre-existing conditions and their monitoring				

Source of this project: KCS Sustainability Report 2018 / KCS Investors Relations General Book / KCS Complaint Line for Non-Unionized Employees, Suppliers and Job Candidates



Comparison of this project vs other projects of the same subsector

(Number of projects included: 10)



Methodological framework defined by the Inter-American Development Bank (IDB)

[View](#)



PROJECT: 0271 Northeastern Railroad

SECTOR:
Transport

SUBSECTOR:
Railways

STAGE ANALYZED:
Operation

YEAR OF UPDATE:
2020

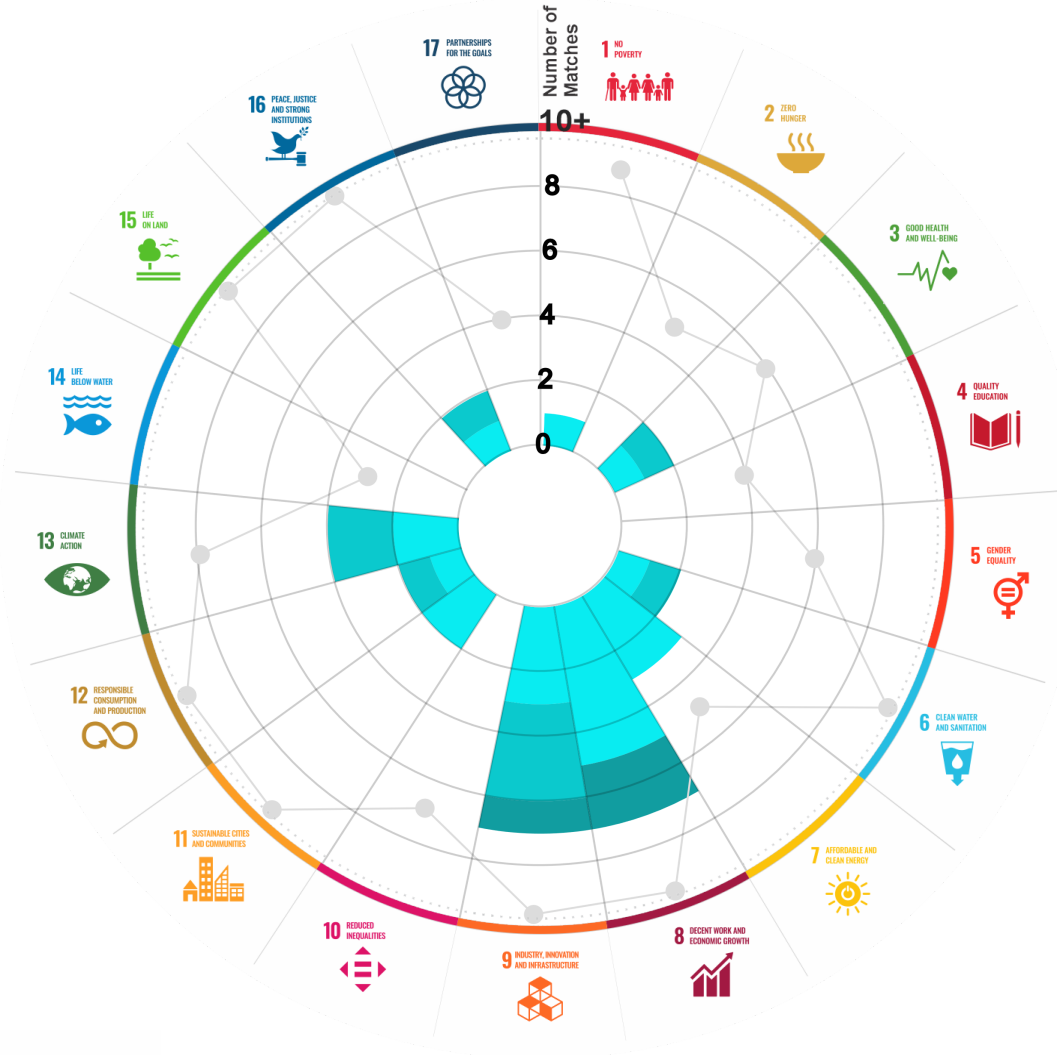
This section aims to present the potential alignment of the infrastructure project with the 17 Sustainable Development Goals (SDGs) of the 2030 Agenda. The relevance of this exercise resides in that it provides information to the actors of the infrastructure ecosystem for decision-making in investment that considers and promotes sustainable development.

Reading guide [View](#)

1. ALIGNMENT BY SUBSECTOR



2. ALIGNMENT BY SDG



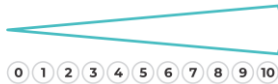
3. ALIGNMENT BY CRITERIA AND TARGETS

[View](#)



Explanation of the alignment of the sustainability criteria and the SDGs.

[View](#)



The tonality of the bars represents the level of detail of the information available from the IDB criteria and its potential alignment for each SDG, based on the scale: N.A., TIER 1, TIER 2 or TIER 3.

Number of times the project information coincides with the alignment of the IDB criteria and the SDGs.

Approximate reference to the number of maximum alignments a project can have between the IDB criteria and the targets of the SDGs.

P R O J E C T

MODERNIZATION, OPERATION, MAINTENANCE, CONSERVATION AND EXPLOITATION OF THE NORTHEASTERN GENERAL RAILWAY LINE.

SECTOR: TRANSPORT
SUBSECTOR: RAILWAYS

Type of Investment: Brownfield

Short Name of the Project: 0271 Northeastern Railroad

Contract Currency:
Mexican Pesos MXN

Estimated Investment MXN
N.A.

Estimated Investment USD
N.A.

Exchange rate (USD/MXN) used by the Ministry of Finance for the economic plan 2021 \$ 22.1

DESCRIPTION

Concession to operate, rehabilitate, maintain, and exploit the 4,282.69 km Northeast railway line. The main routes include the 1,292 km Mexico - Nuevo Laredo line, the 470 Km long Mexico - Veracruz line (through Jalapa) and the 788 km Mexico - Lazaro Cardenas line. This line is connected with the Lazaro Cardenas and Tampico seaports, the Nuevo Laredo and Matamoros border lines, and with the Union Pacific, Tex-Mex, Southern Pacific and Burlington Northern-Santa Fe railways.

The term of the concession is 50 years, starting on the date of completion of the delivery -reception due diligence of the railroad track and the assets, or as of July 31st, 1997, whatever occurs first.

Contract Scope: Modernization, Operation, Maintenance, Conservation, Exploitation

Type of Project: Public / Private

Selection Process:

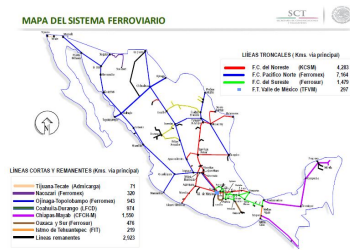
Term: 50 years

Type of Contract: Concession

Payment Source: Project revenues / Rate

Asset (s): Freight Train 4,282.69 KM

GEOLOCATION



SPONSOR



Entity

Secretaría de Comunicaciones y Transportes

Department

Dirección General de Desarrollo Ferroviario y Multimodal

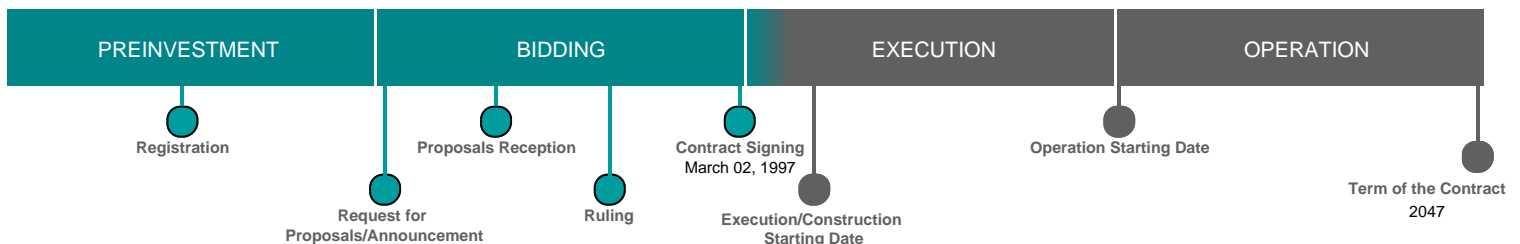
Contact

Ing. Jorge Luis Hernández Luna

E-mail

jorge.hernandezl@sct.gob.mx

TIMELINE



Email: proyectosmexico@banobras.gob.mx



SHCP

SECRETARÍA DE HACIENDA
Y CRÉDITO PÚBLICO

BANOBRAS

BANCO NACIONAL DE OBRAS
Y SERVICIOS PÚBLICOS S.N.C.