



PROJECT: 0280 Suburban Train Cuautitlán-Buenavista Route

SECTOR:
Transport

SUBSECTOR:
Railways

STAGE ANALYZED:
Operation

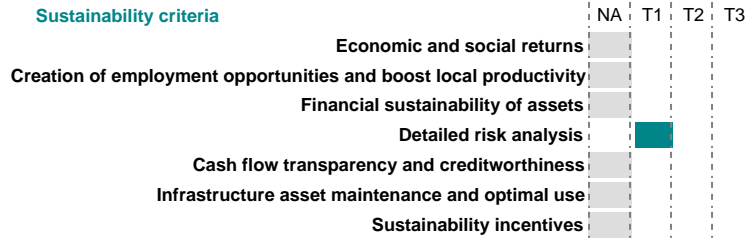
YEAR OF UPDATE:
2020

[Guide to read this datasheet](#) 

Project's sustainability summary: It is estimated that the Project connects 180 thousand users between the Mexiquense municipalities of Tlalnepantla, Tultitlán and Cuautitlán with the Azcapotzalco and Cuauhtémoc delegations in the City, which allows them to save 70 percent in travel times. In addition, the Project is estimated to emit 14 percent less pollutants.

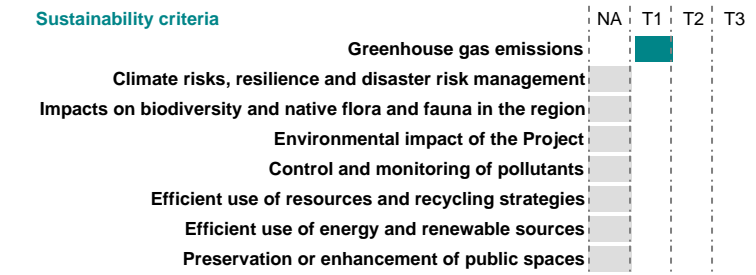
ECONOMIC AND FINANCIAL SUSTAINABILITY

EXAMPLE OF GOOD PRACTICES
Based on the risk assessment, it is proposed to contract the insurance policies needed.



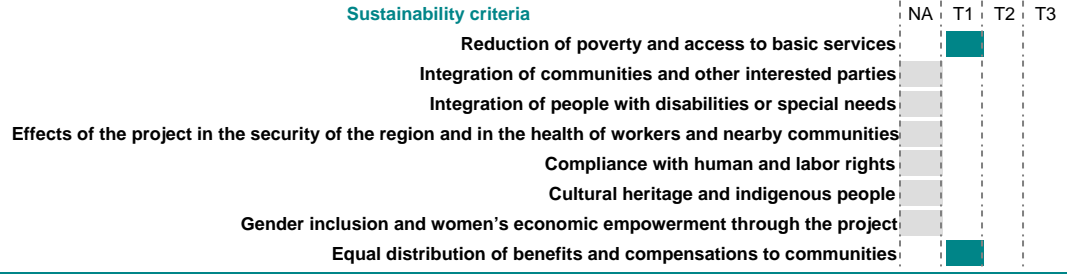
ENVIRONMENTAL SUSTAINABILITY AND CLIMATE RESILIENCE

EXAMPLE OF GOOD PRACTICES
In the 5 years following the start of Project's operation, it is estimated a reduction of 1,691 tons of pollutants in the Valley of Mexico.



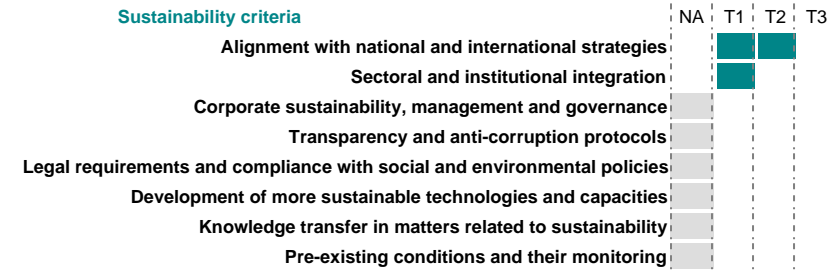
SOCIAL SUSTAINABILITY

EXAMPLE OF GOOD PRACTICES
The Project has allowed an average reduction of 70% in travel times from Buenavista to Cuautitlán.



INSTITUTIONAL SUSTAINABILITY

EXAMPLE OF GOOD PRACTICES
The Project is in line with the provisions of the 2001-2006 Sectoral Communications and Transport Program to take advantage of the railway infrastructure.

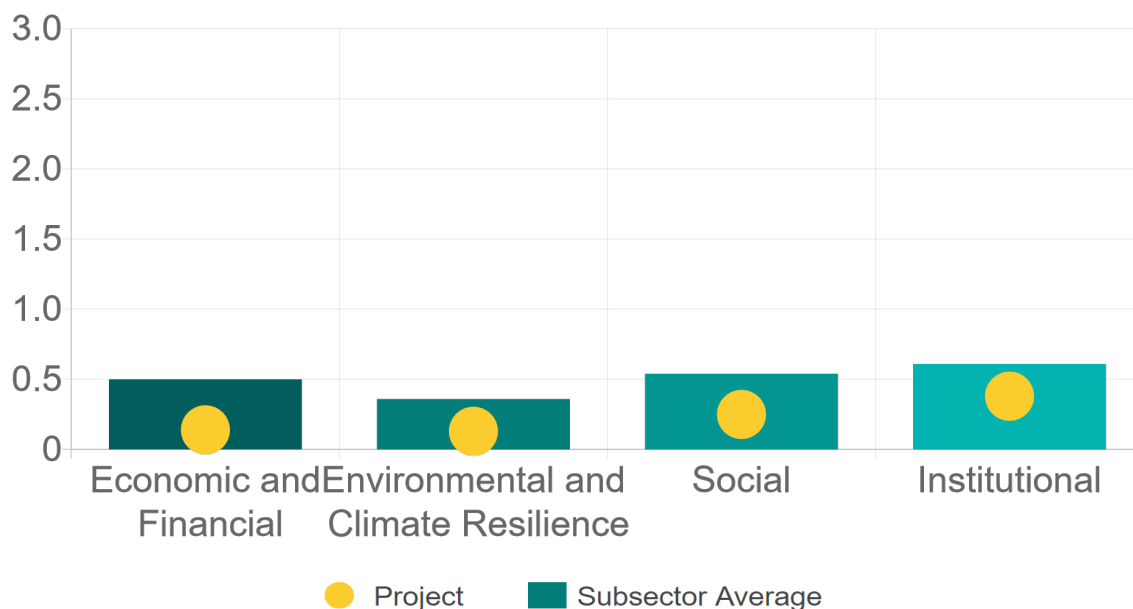


Source of this project: Concession Title Suburban Train Cuautitlan-Buenavista / Suburban Railways Website



Comparison of this project vs other projects of the same subsector

(Number of projects included: 10)



Methodological framework defined by the Inter-American Development Bank (IDB)

View



PROJECT: 0280 Suburban Train Cuautitlán-Buenavista Route

SECTOR:
Transport

SUBSECTOR:
Railways

STAGE ANALYZED:
Operation

YEAR OF UPDATE:
2020

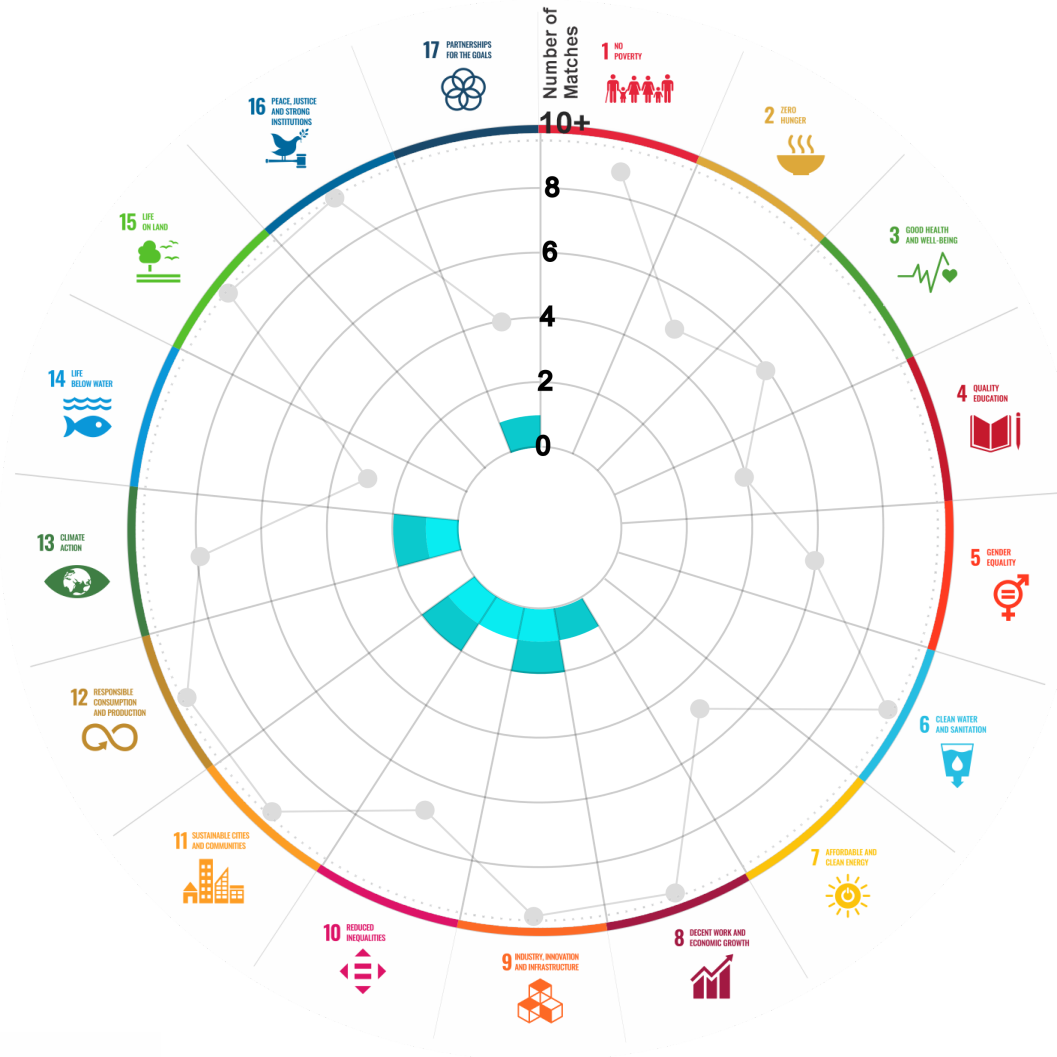
This section aims to present the potential alignment of the infrastructure project with the 17 Sustainable Development Goals (SDGs) of the 2030 Agenda. The relevance of this exercise resides in that it provides information to the actors of the infrastructure ecosystem for decision-making in investment that considers and promotes sustainable development.

Reading guide [View](#)

1. ALIGNMENT BY SUBSECTOR



2. ALIGNMENT BY SDG



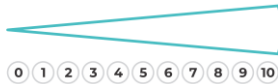
3. ALIGNMENT BY CRITERIA AND TARGETS

[View](#)



Explanation of the alignment of the sustainability criteria and the SDGs.

[View](#)



The tonality of the bars represents the level of detail of the information available from the IDB criteria and its potential alignment for each SDG, based on the scale: N.A., TIER 1, TIER 2 or TIER 3.

Number of times the project information coincides with the alignment of the IDB criteria and the SDGs.

Approximate reference to the number of maximum alignments a project can have between the IDB criteria and the targets of the SDGs.

P R O J E C T

CONSTRUCTION, OPERATION, MAINTENANCE, CONSERVATION AND EXPLOITATION OF THE CUAUTITLAN-BUENAVISTA SUBURBAN TRAIN, IN THE STATE OF MEXICO AND MEXICO CITY.

SECTOR: TRANSPORT
SUBSECTOR: RAILWAYS

Type of Investment:	Brownfield	Banobras/Fonadin involvement	
Short Name of the Project:	0280 Suburban Train Cuautitlán-Buenavista Route		
Contract Currency:	Estimated Investment MXN	Estimated Investment USD	Exchange rate (USD/MXN) used by the Ministry of Finance for the economic plan 2023 \$ 20.6
Mexican Pesos MXN	\$ 7,251,900,000	\$ 352,033,980	

DESCRIPTION

Concession to construct, operate, rehabilitate, maintain, and exploit the public rail passenger service in the regular suburban mode on the 27 km Cuautitlán-Buenavista route is granted.

The provision of the Transportation Service on the routes from Cuautitlán to Huehuetoca, 21 km, from Lechería to Jaltocan, 21 km, in the State of Mexico, and from San Rafael, Tlalnepantla, State of Mexico to Tacuba, in Mexico City. Likewise, the real estate of the Federation, auxiliary services, obligatory rights of way (on the General Road of Railway Communication of the Northeast, in the sections Cuautitlán-Buenavista and Cuautitlán-Huehuetoca) are concessioned. The concession will be in force for 68 years, counted from the date of issue of the title.

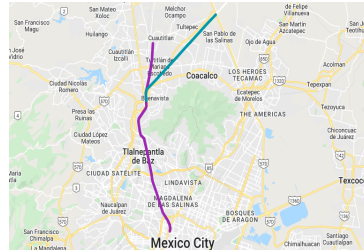
(*) Project with Banobras and/or National Infrastructure Fund (Fonadin) involvement or support.

Contract Scope: Construction, Operation, Maintenance, Conservation, Exploitation

Type of Project:	Public / Private	Selection Process:	Public Bid	Term:	68 years
Type of Contract:	Concession	Payment Source:	Project revenues / Rate		

Asset (s): Passenger Train 69 KM

GEOLOCATION



SPONSOR



Entity

Secretaría de Infraestructura, Comunicaciones y Transportes

Department

Dirección General de Desarrollo Ferroviario y Multimodal

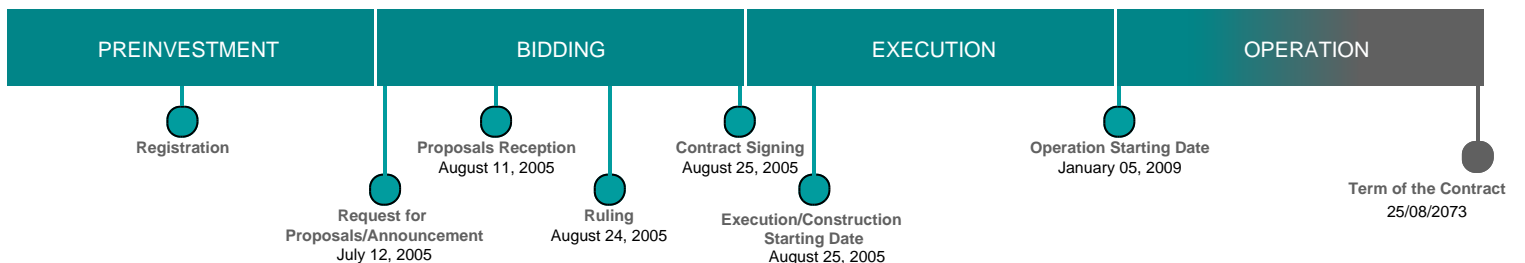
Contact

Lic. Sandra Hernández Alvarado

E-mail

shernaal@sct.gob.mx

TIMELINE



Email: proyectosmexico@banobras.gob.mx



SHCP
SECRETARÍA DE HACIENDA
Y CRÉDITO PÚBLICO

BANOBRAS
BANCO NACIONAL DE OBRAS
Y SERVICIOS PÚBLICOS S.N.C.