



PROJECT: 0815 Lerma – Santiago Tianguistenco Highway and Tenango del Valle Branch

SECTOR:
Transport

SUBSECTOR:
Highways / bridges

STAGE ANALYZED:
Operation

YEAR OF UPDATE:
2020

[Guide to read this datasheet](#) 

Project's sustainability summary: The highway represents road infrastructure that will boost the development of the country. This project considers a campaign to recycle waste, and training regarding flora and fauna management, as well as initiatives that promote the good health of its workers through a health and environmental management policy.



ECONOMIC AND FINANCIAL SUSTAINABILITY

EXAMPLE OF GOOD PRACTICES
Its mission is related to operate with quality, safety and efficiency standards, in order to contribute to achieve a social, economic and environmental welfare locally and regionally.

Sustainability criteria	NA	T1	T2	T3
Economic and social returns				
Creation of employment opportunities and boost local productivity				
Financial sustainability of assets				
Detailed risk analysis				
Cash flow transparency and creditworthiness				
Infrastructure asset maintenance and optimal use				
Sustainability incentives				



ENVIRONMENTAL SUSTAINABILITY AND CLIMATE RESILIENCE

EXAMPLE OF GOOD PRACTICES
A reforestation campaign was carried out where a total of 100 trees were planted. Likewise, lectures related to care and preservation of the environment were held.

Sustainability criteria	NA	T1	T2	T3
Greenhouse gas emissions				
Climate risks, resilience and disaster risk management				
Impacts on biodiversity and native flora and fauna in the region				
Environmental impact of the Project				
Control and monitoring of pollutants				
Efficient use of resources and recycling strategies				
Efficient use of energy and renewable sources				
Preservation or enhancement of public spaces				



SOCIAL SUSTAINABILITY

EXAMPLE OF GOOD PRACTICES
The company, concerned for its workers and their families' health, puts at their disposal the use of mobile clinics for attention and prevention healthcare.

Sustainability criteria	NA	T1	T2	T3
Reduction of poverty and access to basic services				
Integration of communities and other interested parties				
Integration of people with disabilities or special needs				
Effects of the project in the security of the region and in the health of workers and nearby communities				
Compliance with human and labor rights				
Cultural heritage and indigenous people				
Gender inclusion and women's economic empowerment through the project				
Equal distribution of benefits and compensations to communities				



INSTITUTIONAL SUSTAINABILITY

EXAMPLE OF GOOD PRACTICES
The project is part of the UN Global Compact, aligned to strategies and operations in the areas of human rights, labor, environment and fight against corruption.

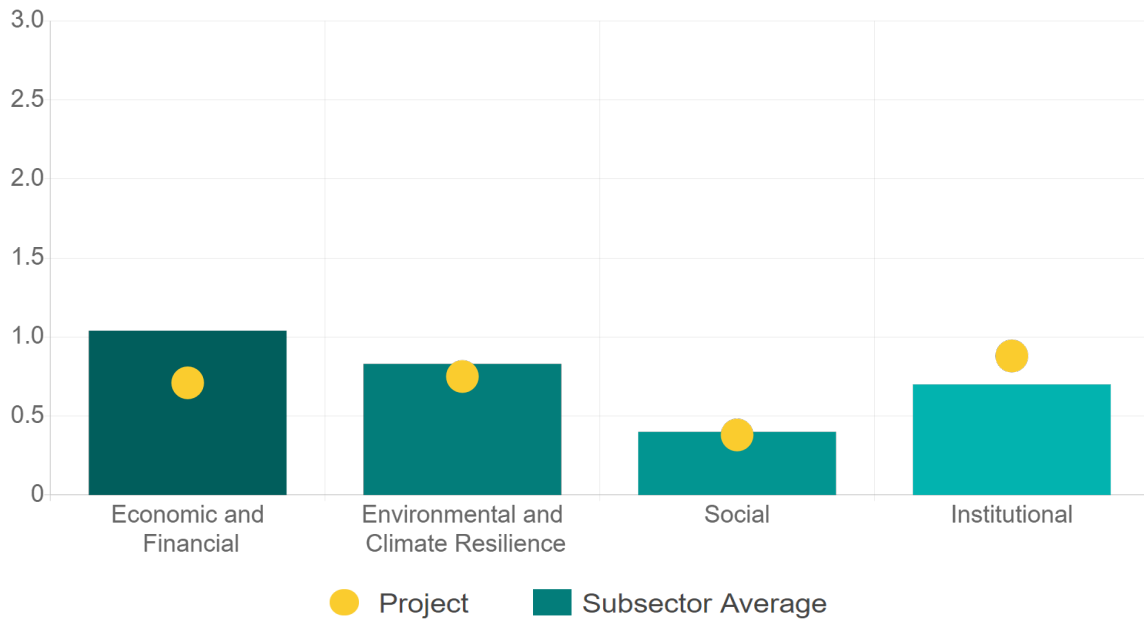
Sustainability criteria	NA	T1	T2	T3
Alignment with national and international strategies				
Sectoral and institutional integration				
Corporate sustainability, management and governance				
Transparency and anti-corruption protocols				
Legal requirements and compliance with social and environmental policies				
Development of more sustainable technologies and capacities				
Knowledge transfer in matters related to sustainability				
Pre-existing conditions and their monitoring				

Source of this project: Lerma – Tenango Highway - "About Us" / Lerma - Tres Marias Highway and Tenango Branch - "Environmental Impact Assessment" / What is Social Responsibility in Grupo Hermes and Lerma-Tenango Highway?



Comparison of this project vs other projects of the same subsector

(Number of projects included: 62)



Methodological framework defined by the Inter-American Development Bank (IDB)

View



PROJECT: 0815 Lerma – Santiago Tianguistenco Highway and Tenango del Valle Branch

SECTOR:
Transport

SUBSECTOR:
Highways / bridges

STAGE ANALYZED:
Operation

YEAR OF UPDATE:
2020

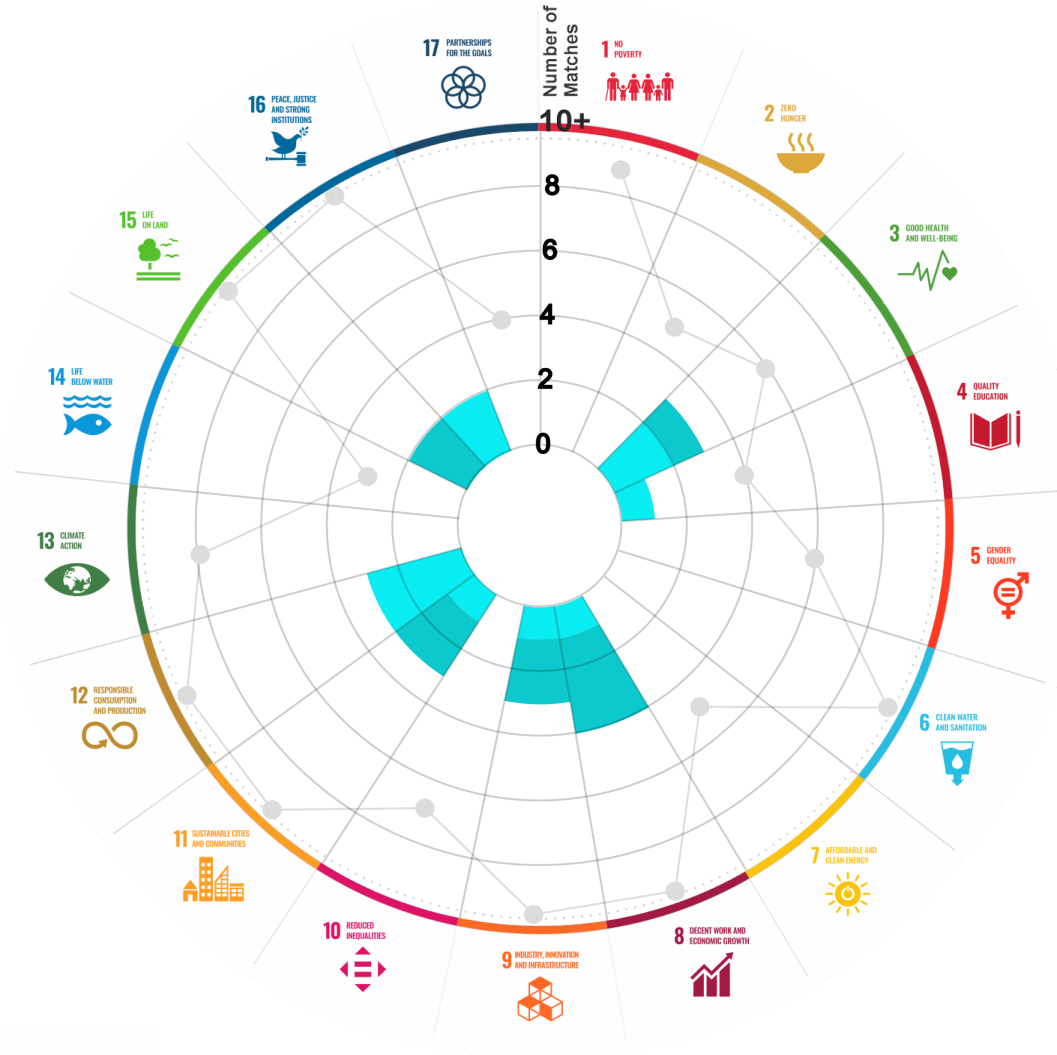
This section aims to present the potential alignment of the infrastructure project with the 17 Sustainable Development Goals (SDGs) of the 2030 Agenda. The relevance of this exercise resides in that it provides information to the actors of the infrastructure ecosystem for decision-making in investment that considers and promotes sustainable development.

Reading guide [View](#)

1. ALIGNMENT BY SUBSECTOR



2. ALIGNMENT BY SDG



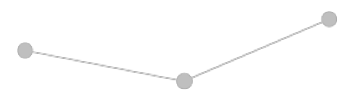
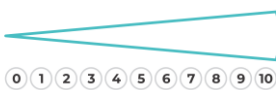
3. ALIGNMENT BY CRITERIA AND TARGETS

[View](#)



Explanation of the alignment of the sustainability criteria and the SDGs.

[View](#)



The tonality of the bars represents the level of detail of the information available from the IDB criteria and its potential alignment for each SDG, based on the scale: N.A., TIER 1, TIER 2 or TIER 3.

Number of times the project information coincides with the alignment of the IDB criteria and the SDGs.

Approximate reference to the number of maximum alignments a project can have between the IDB criteria and the targets of the SDGs.

P R O J E C T

CONSTRUCTION, EQUIPMENT AND OPERATION OF THE LERMA – SANTIAGO TIANGUISTENCO HIGHWAY AND THE TENANGO DEL VALLE BRANCH, IN THE STATE OF MEXICO.

SECTOR: TRANSPORT
SUBSECTOR: HIGHWAYS / BRIDGES

Type of Investment:	Brownfield	Banobras/Fonadin involvement		
Short Name of the Project:	0815 Lerma – Santiago Tianguistenco Highway and Tenango del Valle Branch			
Contract Currency:	Estimated Investment MXN	Estimated Investment USD	Exchange rate (USD/MXN) used by the Ministry of Finance for the economic plan 2023 \$ 20.6	
Mexican Pesos MXN	\$ 2,559,850,716	\$ 124,264,597		

DESCRIPTION

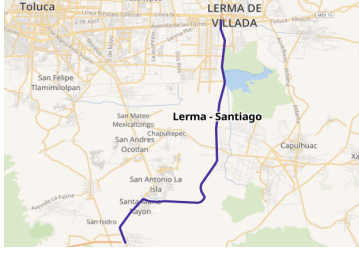
The project consists of the construction, equipment and operation of the Lerma - Santiago highway in two stages:
 First stage: 20.75 km road section with 2 lanes (1 in each direction with shoulder to allow overtaking), to connect the Mexico - Toluca highway and the Ruta de la Independencia Bicentenario bypass with the Tenango - Ixtapan de la Sal highway. The Tenango del Valle branch is included.
 Second stage: 7.3 km starting from the branch to Tenango in the direction of Ocuilan.
 The State of Mexico calls it "First Green Highway", for the number of actions that are carried out to improve the environment in the adjacent areas along its route.

(*) Project with Banobras and/or National Infrastructure Fund (Fonadin) involvement or support.

Contract Scope: Construction, Equipment, Operation

Type of Project:	Public / Private	Selection Process:	Public Bid	Term:	52 years
Type of Contract:	State Concession	Payment Source:	Project revenues / Rate		
Asset (s):	Highway 28.08 KM				

GEOLOCATION

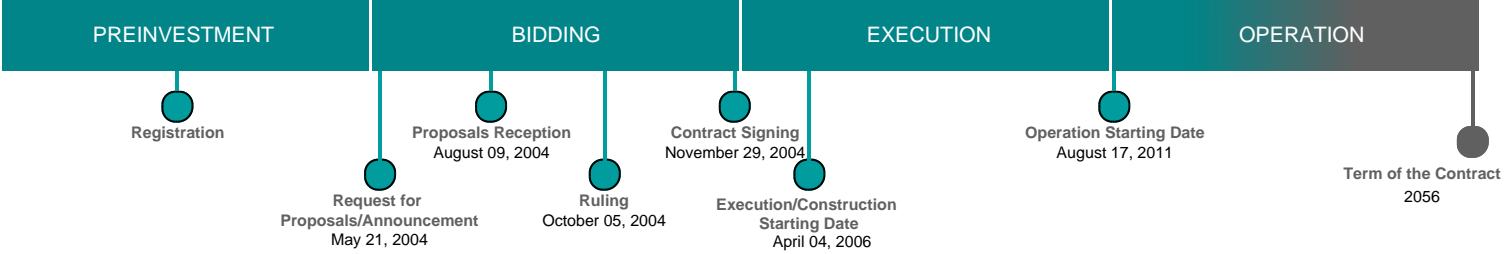


SPONSOR

Entity
Gobierno Estatal

Department
Sistema de Autopistas, Aeropuertos, Servicios Conexos y Auxiliares del Estado de México

TIMELINE



Email: proyectosmexico@banobras.gob.mx



SHCP
SECRETARÍA DE HACIENDA
Y CRÉDITO PÚBLICO

BANOBRAS
BANCO NACIONAL DE OBRAS
Y SERVICIOS PÚBLICOS S.N.C.