



**PROJECT:** 0150 General Hospital in Tampico, Tamaulipas

**SECTOR:**  
Social Infrastructure

**SUBSECTOR:**  
Health

**STAGE ANALYZED:**  
Preinvestment

**YEAR OF UPDATE:**  
2020

[Guide to read this datasheet](#) 

**Project's sustainability summary:** The project seeks to reduce the percentage of unmet demand and the subrogation of services, facilitating the surrounding communities better access to health services.

## ECONOMIC AND FINANCIAL SUSTAINABILITY

**EXAMPLE OF GOOD PRACTICES**  
Increased efficiency in the provision of health services will result in cost reductions and rational use of resources (decrease in patient relocation cases).

Sustainability criteria	NA	T1	T2	T3
Economic and social returns		█		
Creation of employment opportunities and boost local productivity				
Financial sustainability of assets		█		
Detailed risk analysis		█		
Cash flow transparency and creditworthiness		█		
Infrastructure asset maintenance and optimal use				
Sustainability incentives				

## ENVIRONMENTAL SUSTAINABILITY AND CLIMATE RESILIENCE

**EXAMPLE OF GOOD PRACTICES**  
No reference information on the environmental sustainability of the project and the integration of climate change measures has been identified.

Sustainability criteria	NA	T1	T2	T3
Greenhouse gas emissions				
Climatic risks, resilience and disaster management				
Impacts on biodiversity and native flora and fauna in the region				
Environmental impact of the project				
Control and monitoring of pollutants				
Efficient use of resources and recycling strategies				
Efficient use of energy and renewable sources				
Preservation or enhancement of public spaces				

## SOCIAL SUSTAINABILITY

**EXAMPLE OF GOOD PRACTICES**  
The project refers to the inclusion of women in employment creation, in addition to the integration of special needs.

Sustainability criteria	NA	T1	T2	T3
Reduction of poverty and access to basic services		█	█	
Integration of communities and other interested parties				
Integration of people with disabilities or special needs				
Effects of the project in the security of the region and in the health of workers and nearby communities		█		
Compliance with human and labor rights				
Cultural heritage and indigenous people				
Gender inclusion and women's economic empowerment through the project		█		
Equal distribution of benefits and compensations to communities				

## INSTITUTIONAL SUSTAINABILITY

**EXAMPLE OF GOOD PRACTICES**  
It is aligned with national strategic objectives such as the Health Sectoral Program and the ISSSTE Law, among others, by having adequate facilities to provide medical care.

Sustainability criteria	NA	T1	T2	T3
Alignment with national and international strategies		█		
Sectoral and institutional integration				
Corporate sustainability, management and governance				
Transparency and anti-corruption protocols				
Legal requirements and compliance with social and environmental policies		█		
Development of more sustainable technologies and capacities				
Pre-existing conditions and their monitoring		█		

**Source of this project:** Cost Benefit Analysis

**PROJECT:** 0150 General Hospital in Tampico, Tamaulipas

**SECTOR:**  
Social Infrastructure

**SUBSECTOR:**  
Health

**STAGE ANALYZED:**  
Preinvestment

**YEAR OF UPDATE:**  
2020

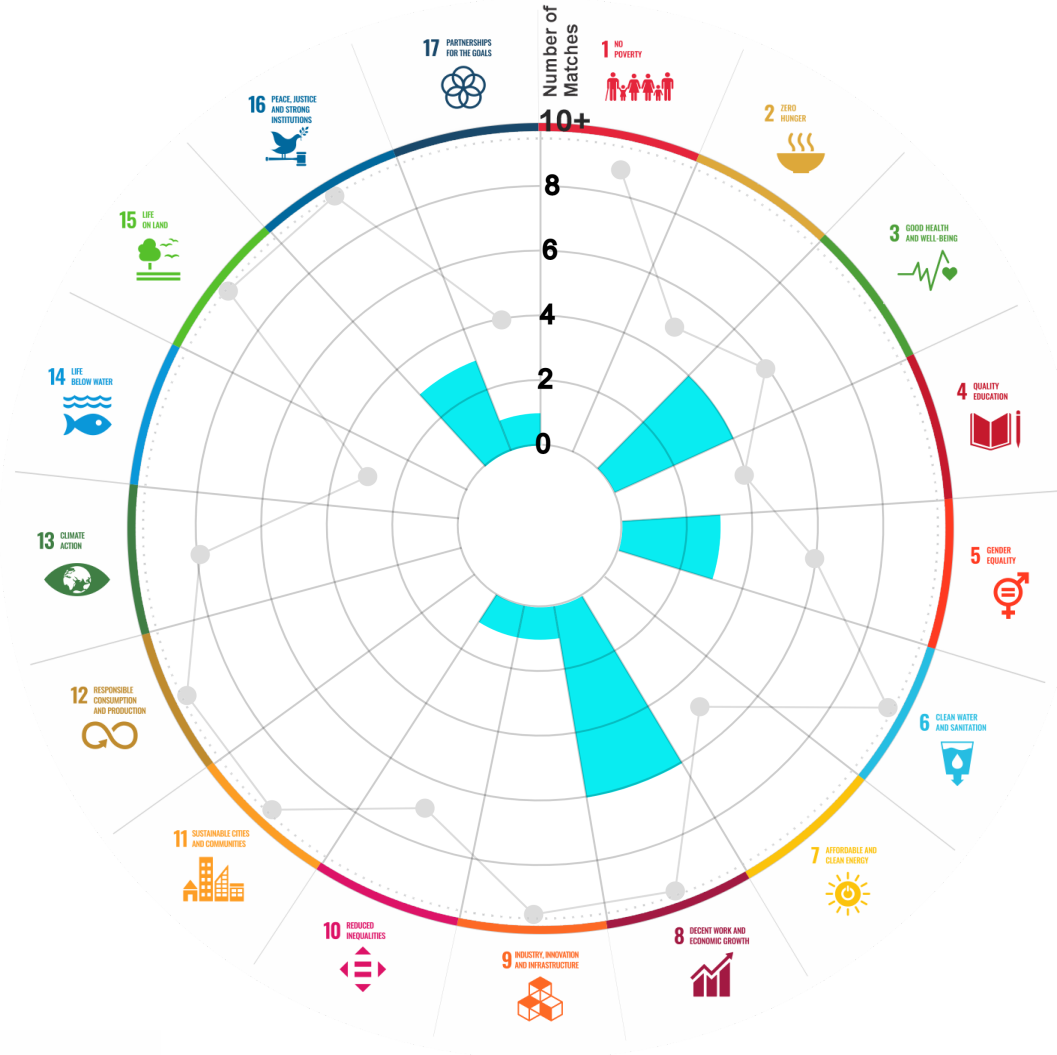
This section aims to present the potential alignment of the infrastructure project with the 17 Sustainable Development Goals (SDGs) of the 2030 Agenda. The relevance of this exercise resides in that it provides information to the actors of the infrastructure ecosystem for decision-making in investment that considers and promotes sustainable development.

Reading guide [View](#)

## 1. ALIGNMENT BY SUBSECTOR



## 2. ALIGNMENT BY SDG



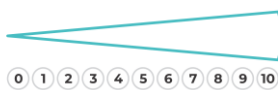
## 3. ALIGNMENT BY CRITERIA AND TARGETS

[View](#)



Explanation of the alignment of the sustainability criteria and the SDGs.

[View](#)



The tonality of the bars represents the level of detail of the information available from the IDB criteria and its potential alignment for each SDG, based on the scale: N.A., TIER 1, TIER 2 or TIER 3.

Number of times the project information coincides with the alignment of the IDB criteria and the SDGs.

Approximate reference to the number of maximum alignments a project can have between the IDB criteria and the targets of the SDGs.

# PROJECT

DESIGN, CONSTRUCTION, EQUIPMENT, OPERATION AND MAINTENANCE OF THE GENERAL HOSPITAL IN TAMPICO, TAMAULIPAS.

SECTOR: SOCIAL INFRASTRUCTURE  
SUBSECTOR: HEALTH

Type of Investment: Greenfield  Green Project

Short Name of the Project: 0150 General Hospital in Tampico, Tamaulipas

Contract Currency:	Estimated Investment MXN	Estimated Investment USD	Exchange rate (USD/MXN) used by the Ministry of Finance for the economic plan 2021 \$ 22.1
Mexican Pesos MXN	\$ 1,341,380,000	\$ 60,695,927	

## DESCRIPTION

Construction of a Level 2 hospital that will replace the actual general hospital in Tampico, Tamaulipas.

The hospital will have 150 registered beds, 27 medical offices, 4 operating rooms, and diagnostic and treatment auxiliary services.

Medical services will be provided by ISSSTE staff.

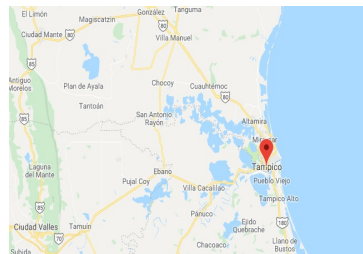
**Contract Scope:** Design, Construction, Equipment, Operation, Maintenance

Type of Project: Public / Private      Selection Process: International Tender Under Treaty      Term: 25 years

Type of Contract: Federal PPP      Payment Source: Budgetary

**Asset (s):** Hospital 150 Beds, 27 Doctor's office, 4 Surgery room

## GEOLOCATION



## SPONSOR



### Entity

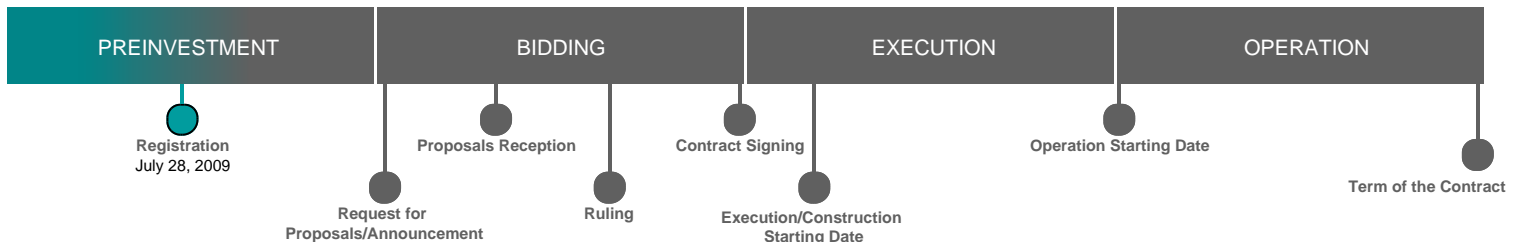
Instituto de Seguridad y Servicios Sociales de los Trabajadores del Estado

### Department

Dirección de Administración/Subdirección de Infraestructura

**E-mail** [app.issste@issste.gob.mx](mailto:app.issste@issste.gob.mx)

## TIMELINE



Email: [proyectosmexico@banobras.gob.mx](mailto:proyectosmexico@banobras.gob.mx)



**SHCP**  
SECRETARÍA DE HACIENDA  
Y CRÉDITO PÚBLICO

**BANOBRAS**  
BANCO NACIONAL DE OBRAS  
Y SERVICIOS PÚBLICOS S.N.C.