

PROJECT: 0914 Integral Mobility Model of the South Zone of the Metropolitan Area of Guadalajara (Line 4)

SECTOR:
Transport

SUBSECTOR:
Urban Mobility

STAGE ANALYZED:
Bidding

YEAR OF UPDATE:
2022

[Guide to read this datasheet](#)



Project's sustainability summary: The project purpose is to improve the connectivity for the population towards the South of metropolitan area of Guadalajara to Tlajomulco de Zúñiga to cover a demand of 117 thousand daily trips, through the operation of an electric train system. It is considered in the coordination strategy of mass public transport and CO2 emissions reduction. The project includes eco techniques and the gender perspective [Show more...](#)



ECONOMIC AND FINANCIAL SUSTAINABILITY

[EXAMPLE OF GOOD PRACTICES](#)


Sustainability criteria	NA	T1	T2	T3
Economic and social returns				
Creation of employment opportunities and boost local productivity				
Financial sustainability of assets				
Value for money principle				
Detailed risk analysis				
Cash flow transparency and creditworthiness				
Infrastructure asset maintenance and optimal use				
Sustainability incentives				



ENVIRONMENTAL SUSTAINABILITY AND CLIMATE RESILIENCE

[EXAMPLE OF GOOD PRACTICES](#)
Considers the collection of rainwater in the stations and a plan for urban landscaping and protection against atmospheric agents.

Sustainability criteria	NA	T1	T2	T3
Greenhouse gas emissions				
Climate risks, resilience and disaster risk management				
Impacts on biodiversity and native flora and fauna in the region				
Environmental impact of the Project				
Control and monitoring of pollutants				
Efficient use of resources and recycling strategies				
Efficient use of energy and renewable sources				
Preservation or enhancement of public spaces				



SOCIAL SUSTAINABILITY

[EXAMPLE OF GOOD PRACTICES](#)
The project includes safe areas for women and lactation spaces in the stations.

Sustainability criteria	NA	T1	T2	T3
Reduction of poverty and access to basic services				
Integration of communities and other interested parties				
Integration of people with disabilities or special needs				
Effects of the project in the security of the region and in the health of workers and nearby communities				
Compliance with human dn labor rights				
Cultural heritage and indigenous people				
Gender inclusion and women's economic empowerment through the project				
Equal distribution of benefits and compensations to communities				



INSTITUTIONAL SUSTAINABILITY

[EXAMPLE OF GOOD PRACTICES](#)
The bidding process includes the figure of social witness.

Sustainability criteria	NA	T1	T2	T3
Alignment with national and international strategies				
Sectoral and institutional integration				
Transparency of the process				
Corruption and mitigation process				
Compliance with social and environmental policies				
Training development in aspects related to sustainability				
Pre-existing conditions and their monitoring				

Source of this project: Cost-Benefit Analysis / Contract model / Environmental Impact Assessment (Project description) / EIA (Legal Binding) / EIA (Environmental Impacts) / EIA (Mitigation measures)

PROJECT: 0914 Integral Mobility Model of the South Zone of the Metropolitan Area of Guadalajara (Line 4)

SECTOR:
Transport

SUBSECTOR:
Urban Mobility

STAGE ANALYZED:
Bidding

YEAR OF UPDATE:
2022

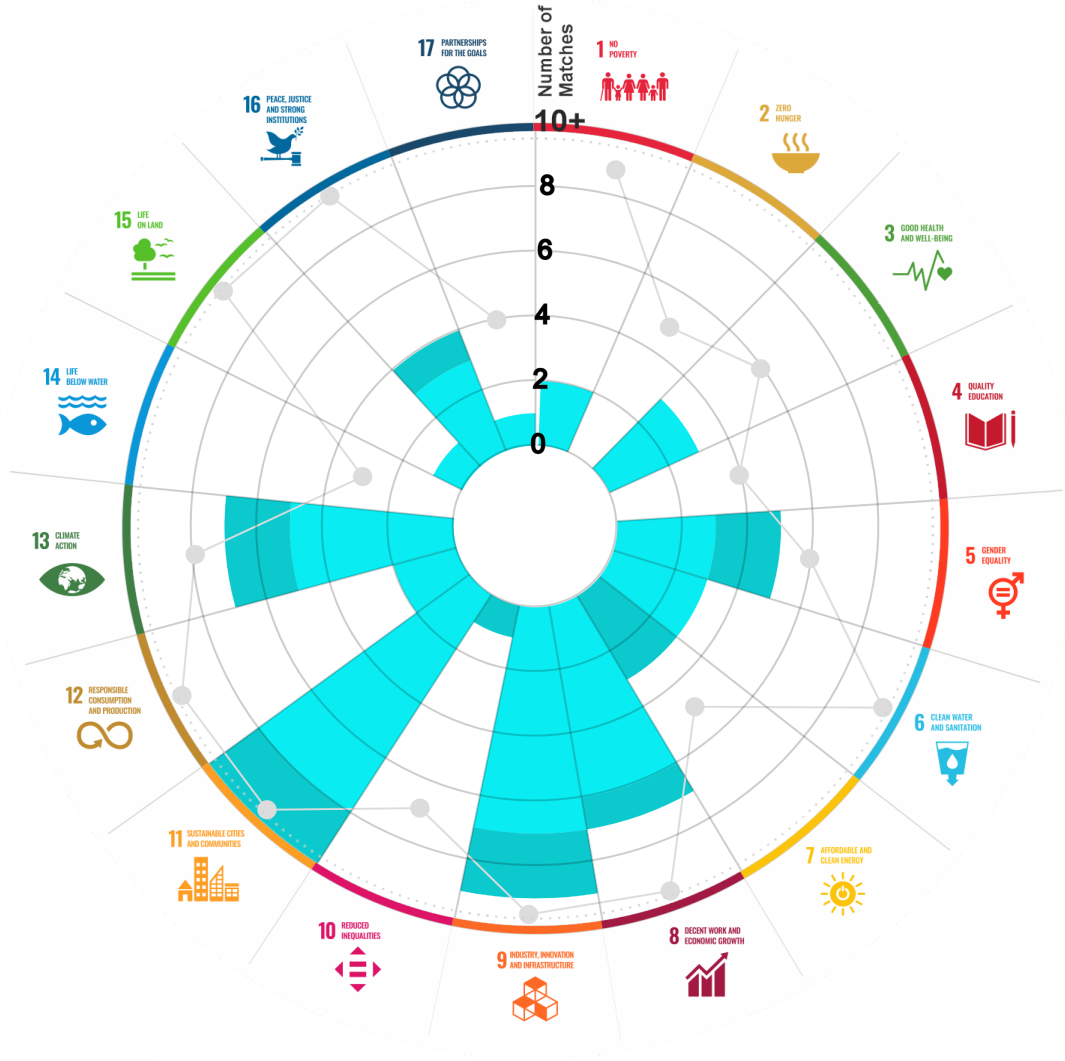
This section aims to present the potential alignment of the infrastructure project with the 17 Sustainable Development Goals (SDGs) of the 2030 Agenda. The relevance of this exercise resides in that it provides information to the actors of the infrastructure ecosystem for decision-making in investment that considers and promotes sustainable development.

Reading guide [View](#)

1. ALIGNMENT BY SUBSECTOR



2. ALIGNMENT BY SDG



3. ALIGNMENT BY CRITERIA AND TARGETS

[View](#)

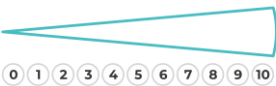


Explanation of the alignment of the sustainability criteria and the SDGs.

[View](#)



The tonality of the bars represents the level of detail of the information available from the IDB criteria and its potential alignment for each SDG, based on the scale: N.A., TIER 1, TIER 2 or TIER 3.



Number of times the project information coincides with the alignment of the IDB criteria and the SDGs.



Approximate reference to the number of maximum alignments a project can have between the IDB criteria and the targets of the SDGs.

PROJECT

DESIGN, EXECUTIVE PROJECT, CONSTRUCTION, EQUIPMENT AND OPERATION OF THE INTEGRAL MOBILITY MODEL OF THE SOUTH ZONE OF THE METROPOLITAN AREA OF GUADALAJARA (LINE 4), IN THE STATE OF JALISCO.

SECTOR: TRANSPORT
SUBSECTOR: URBAN MOBILITY

Type of Investment: Greenfield

 Green Project

Short Name of the Project: 0914 Integral Mobility Model of the South Zone of the Metropolitan Area of Guadalajara (Line 4)

Contract Currency:

Estimated Investment MXN

Estimated Investment USD

Exchange rate (USD/MXN) used by the Ministry of Finance for the economic plan 2022 \$ 20.3

Mexican Pesos MXN

\$ 9,725,000,000

\$ 479,064,039

DESCRIPTION

Project through PPP in co-investment mode for up to 38 years consisting of the design, executive project, construction, equipment and operation of an urban electric train-type mass transportation system, which is intended to be developed within the general railway communication route, corresponding to line I, between Guadalajara and Tlajomulco de Zúñiga, within the concession right of way, between km I-266+500 and km I-287+667, having an approximate length of 21.16 kilometers.

The performance of the works under the co-investment contract is carried out in two periods and three stages.

Contract Scope: Design, Construction, Equipment, Operation

Type of Project: Public / Private

Selection Process: Open Domestic Bidding

Term: 38 years

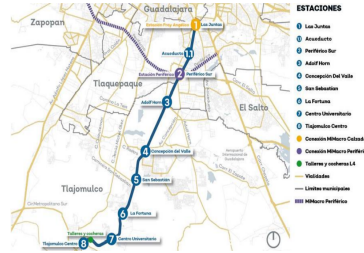
Type of Contract: State PPP

Payment Source: Project revenues / Rate

Asset (s):

Electrified double track 21.16 KM, Electric Train 12, Stations 8, Control and Collection System

GEOLOCATION



SPONSOR



Entity

Gobierno Estatal

Department

Comité Estatal de Adjudicación de Proyectos
Sistema de Tren Eléctrico Urbano (SITEUR), Jalisco

Contact

Ing. Juan Carlos Holguín Aguirre

E-mail

proyecto.linea4@jalisco.gob.mx

TIMELINE



Email: proyectosmexico@banobras.gob.mx



SHCP
SECRETARÍA DE HACIENDA
Y CRÉDITO PÚBLICO

BANOBRAS

BANCO NACIONAL DE OBRAS
Y SERVICIOS PÚBLICOS S.N.C.